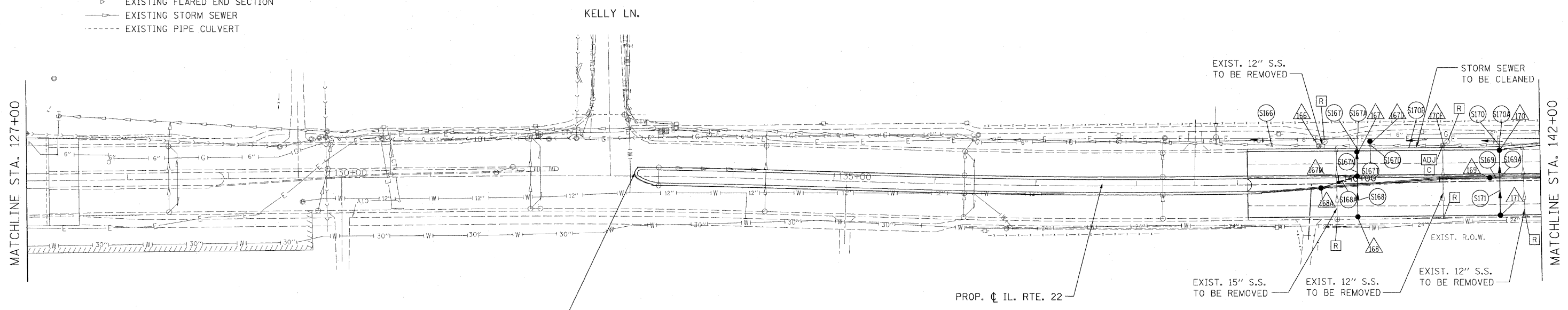


- LEGEND:**
- ⊙ PROPOSED MANHOLE
 - PROPOSED CATCH BASIN
 - PROPOSED STORM SEWER
 - ▶ PROPOSED FLARED END SECTION
 - EXISTING MANHOLE
 - EXISTING CATCH BASIN
 - EXISTING INLET
 - ▶ EXISTING FLARED END SECTION
 - EXISTING STORM SEWER
 - - - EXISTING PIPE CULVERT



DATE	
BY	
REVISIONS	
NO.	
DATE	
BY	
REVISIONS	
NO.	
DATE	
BY	
REVISIONS	
NO.	

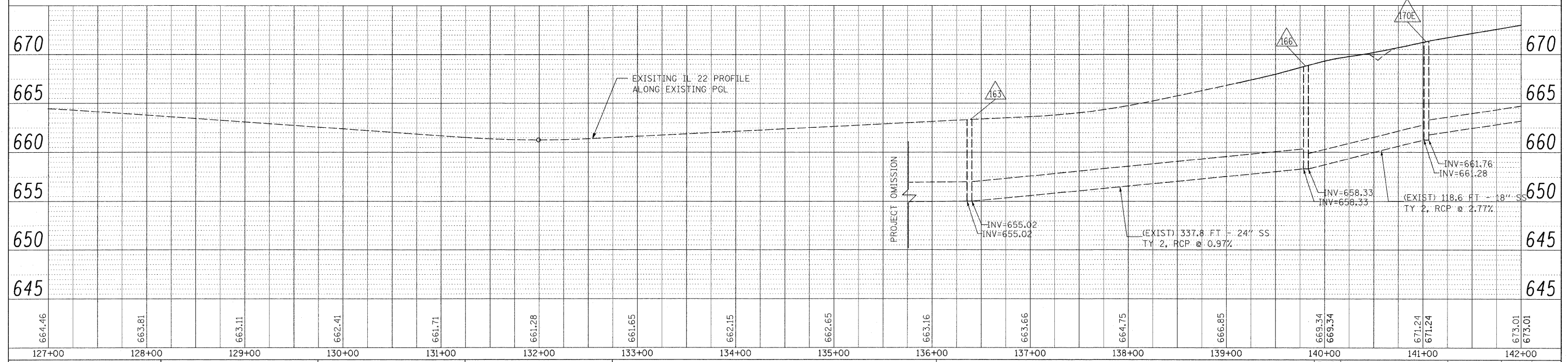
DATE	
BY	
REVISIONS	
NO.	
DATE	
BY	
REVISIONS	
NO.	
DATE	
BY	
REVISIONS	
NO.	



IL. ROUTE 22
BRIDGE OMISSION ENDS
STA. 133+02.52

- △ PROPOSED STORM STRUCTURE
- PROPOSED STORM SEWER
- R EXISTING STRUCTURE TO BE REMOVED
- AB EXISTING STORM SEWER TO BE ABANDONED
- ADJ EXISTING STRUCTURE TO BE ADJUSTED
- C EXISTING STRUCTURE TO BE CLEANED

NOTE:
STORM WATER STRUCTURE OFFSET LOCATIONS GIVEN ON THE DETAILED PLANS ARE TO THE FOLLOWING POINTS: A) FOR STRUCTURES FALLING IN THE CURB LINE - TO THE EDGE OF PAVEMENT; B) FOR ALL OTHER STRUCTURE LOCATIONS - TO THE CENTER OF THE STRUCTURE.



FILE NAME = W:\ILRTE22\2009 REVISIONS\CADD Sheets\08860-sht-drain.dgn	USER NAME = #USER#	DESIGNED - LP	REVISIONS -	STATE OF ILLINOIS DEPARTMENT OF TRANSPORTATION	IL. ROUTE 22 DRAINAGE PLAN AND PROFILE	F.A.P. RTE. 337	SECTION 20R-4	COUNTY LAKE	TOTAL SHEETS 232	SHEET NO. 98	
PLOT SCALE = #SCALE#	CHECKED - JP	REVISIONS -	SCALE: 1"=50'			SHEET NO. 98 OF 232 SHEETS	STA. 127+00 TO STA. 142+00	CONTRACT NO. 60860		ILLINOIS FED. AID PROJECT	
PLOT DATE = 5/15/2010	DATE - 05/14/2010	REVISIONS -									