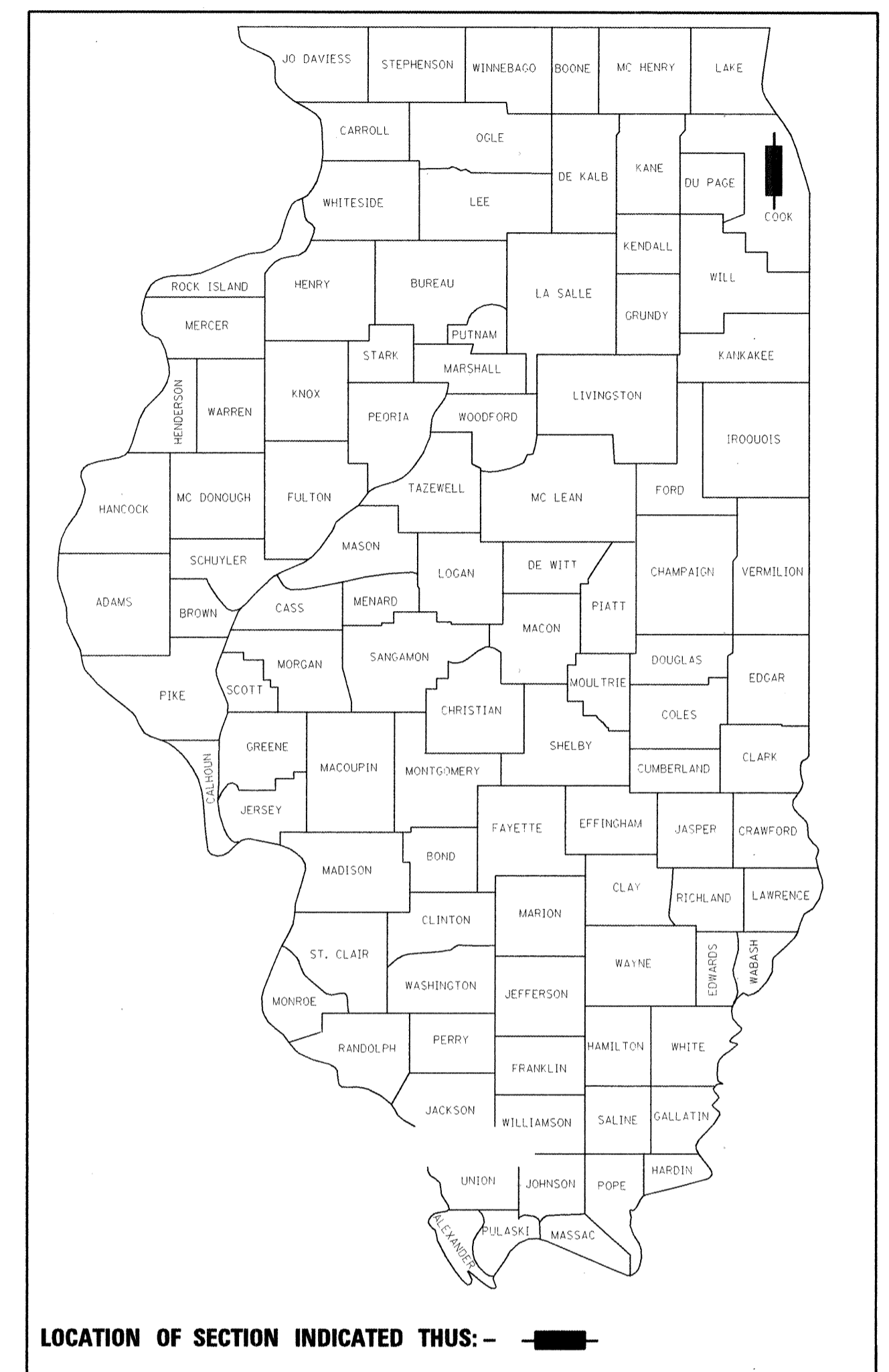


F.A.I. RTE.	SECTION	COUNTY	TOTAL SHEETS	SHEET NO.
94	0101.8B	COOK	139	1
		ILLINOIS	CONTRACT NO. 60C18	

*139+6=145
 145+4=149

D-91-149-07



LOCATION OF SECTION INDICATED THUS: -

PROJECT IS LOCATED IN THE CITY OF CHICAGO

STATE OF ILLINOIS
 DEPARTMENT OF TRANSPORTATION
 DIVISION OF HIGHWAYS

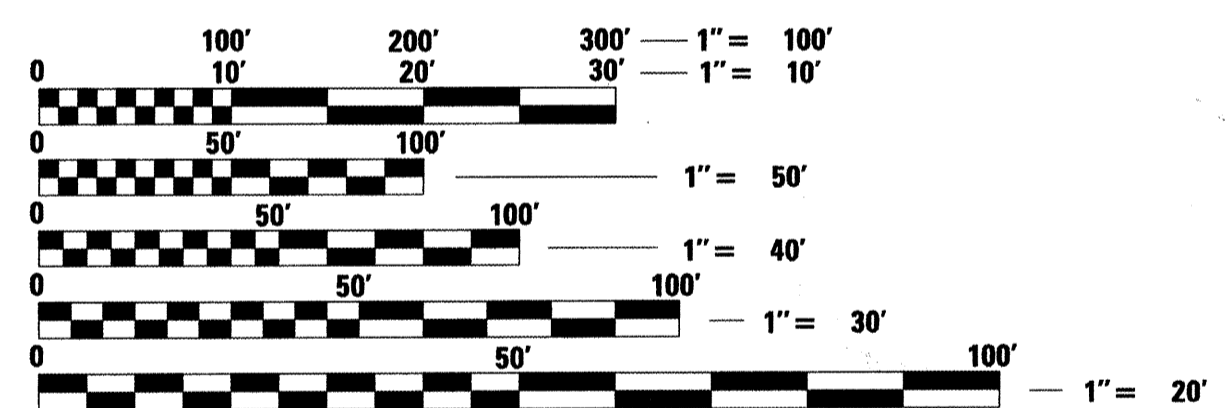
FOR INDEX OF SHEETS, SEE SHEET NO. 2
 FOR STATE STANDARDS, SEE SHEET NO. 2

PROPOSED HIGHWAY PLANS

ROUTE FAI 94: I-94 (EDENS EXPRESSWAY)
 LOCATION: AT ELSTON AVE
 SECTION: 0101.8B
 PROJECT: ACIM-094-2(246)043
 BRIDGE REPLACEMENT & LIGHTING
 C-91-149-07
 COOK COUNTY

TRAFFIC DATA

	POSTED SPEED	DESIGN SPEED
ELSTON AVE	30	30
I-94	55	55

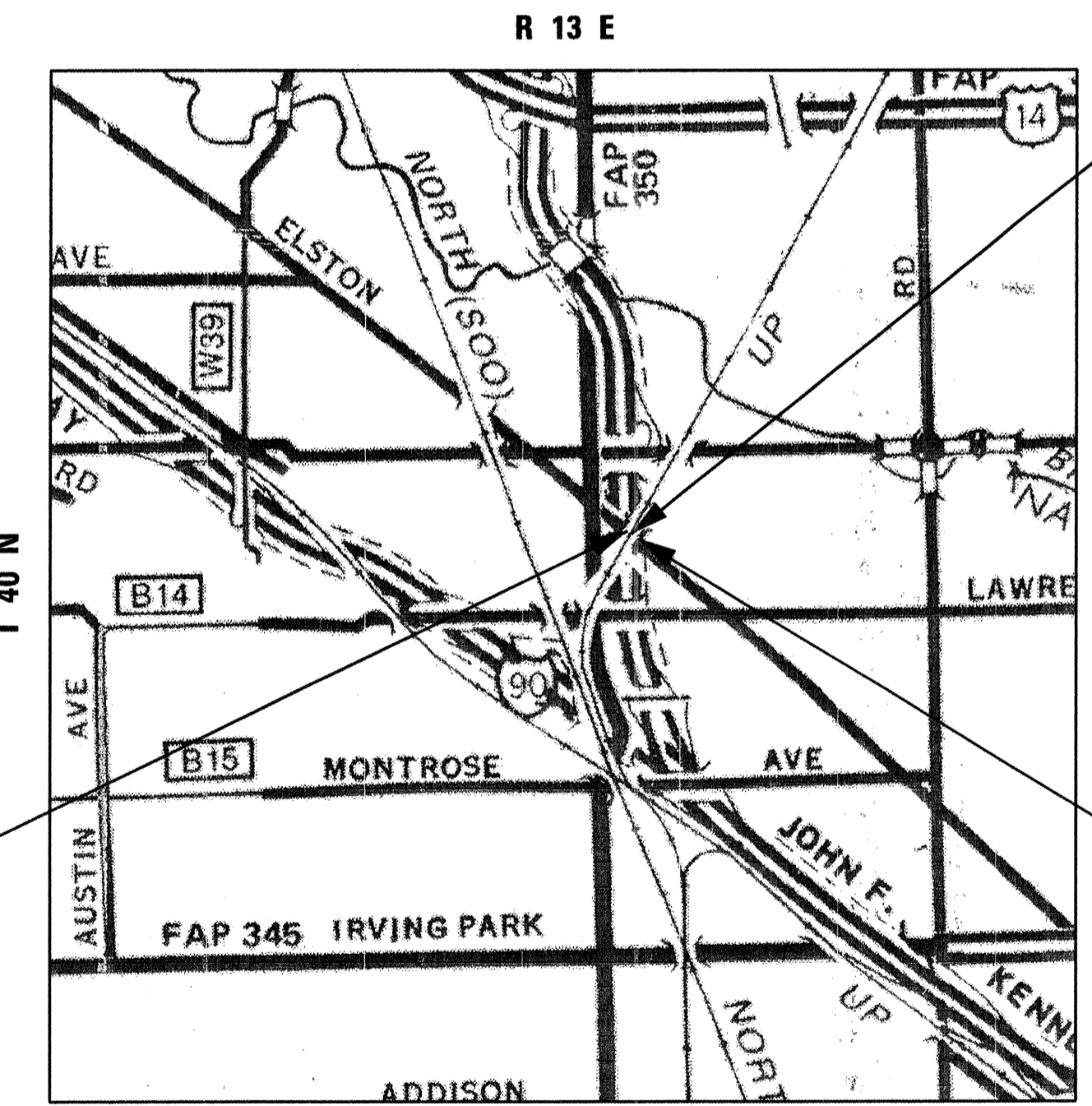


FULL SIZE PLANS HAVE BEEN PREPARED USING STANDARD ENGINEERING SCALES. REDUCED SIZED PLANS WILL NOT CONFORM TO STANDARD SCALES. IN MAKING MEASUREMENTS ON REDUCED PLANS, THE ABOVE SCALES MAY BE USED.

J.U.L.I.E.
 JOINT UTILITY LOCATION INFORMATION FOR EXCAVATION
 1-800-892-0123 OR 811
 AND C.U.A.N.
 CHICAGO UTILITY ALERT NETWORK
 (312) 744-7000

PROJECT ENGINEER: CRAIG BAUER - 847-705-4265
 PROJECT MANAGER: LONG TRAN - 847-705-4232

CONTRACT NO. 60C18



OVERPASS
 ELSTON OVER I-94
 STA 49 + 99.23
 S.N. 016-0610
 147'-4" CONTINUOUS
 TWO SPAN COMPOSITE
 MULTI-GIRDER BRIDGE

PROJECT BEGINS
 STA 48 + 57

PROJECT ENDS
 51 + 71

LIGHTING DESIGNED BY
 SPAAN Tech, Inc.
 311 S. Wacker Drive, Suite 2400
 Chicago, Illinois 60606
 phone: 312.277.8800
 fax: 312.277.8808
 web: www.SpaanTech.com

JEFFERSON TOWNSHIP
 GROSS LENGTH = 314 FT. = 0.06 MILE
 NET LENGTH = 314 FT. = 0.06 MILE

ROADWAY AND STRUCTURES DESIGNED BY

IRVIN A. BERMAN
 LICENSED PROFESSIONAL ENGINEER
 OF ILLINOIS
 062-029180
 SIGNATURE: *Irvin A. Berman*
 DATE: 6/18/2010
 EXPIRES: 11/30/2011

STATE OF ILLINOIS
 REGISTERED PROFESSIONAL ENGINEER
 Gregory R. Brumm
 049216
 SIGNATURE: *Gregory R. Brumm*
 DATE: 6/18/10
 EXPIRES: 11/30/11

WAYNE A. TRLEY
 REGISTERED STRUCTURAL ENGINEER
 OF ILLINOIS
 SIGNATURE: *Wayne A. Trley*
 DATE: 6-18-10
 EXPIRES: 11-30-10

STATE OF ILLINOIS
 DEPARTMENT OF TRANSPORTATION
 DIVISION OF HIGHWAYS
 SUBMITTED JUNE 21, 2010
 Diana M. O'Keefe
 DEPUTY DIRECTOR OF HIGHWAYS, REGION ENGINEER
 August 13, 2010
 Scott E. Stitt, P.E.
 acting ENGINEER OF DESIGN AND ENVIRONMENT
 August 13, 2010
 Christine M. Resler
 DIRECTOR OF HIGHWAYS, CHIEF ENGINEER

PRINTED BY THE AUTHORITY
 OF THE STATE OF ILLINOIS