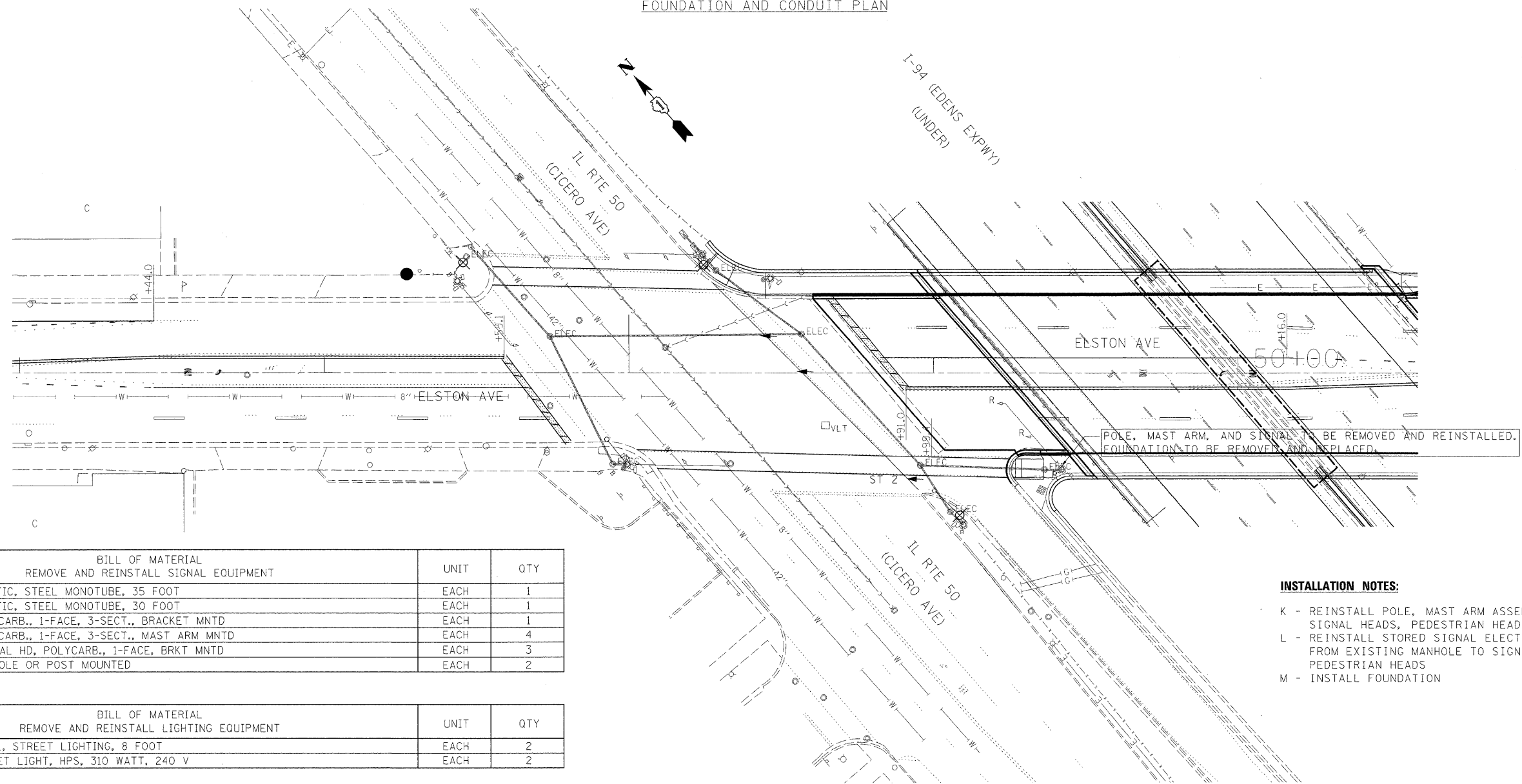


FOUNDATION AND CONDUIT PLAN

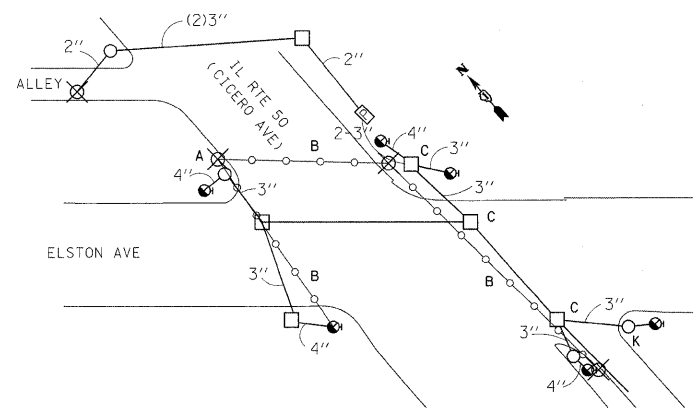


BILL OF MATERIAL REMOVE AND REINSTALL SIGNAL EQUIPMENT		
	UNIT	QTY
MAST ARM, TRAFFIC, STEEL MONOTUBE, 35 FOOT	EACH	1
MAST ARM, TRAFFIC, STEEL MONOTUBE, 30 FOOT	EACH	1
SIGNAL HD, POLYCARB., 1-FACE, 3-SECT., BRACKET MNTD	EACH	1
SIGNAL HD, POLYCARB., 1-FACE, 3-SECT., MAST ARM MNTD	EACH	4
PEDESTRIAN SIGNAL HD, POLYCARB., 1-FACE, BRKT MNTD	EACH	3
JUNCTION BOX, POLE OR POST MOUNTED	EACH	2

BILL OF MATERIAL REMOVE AND REINSTALL LIGHTING EQUIPMENT		
	UNIT	QTY
MAST ARM, STEEL, STREET LIGHTING, 8 FOOT	EACH	2
LUMINAIRE, STREET LIGHT, HPS, 310 WATT, 240 V	EACH	2

INSTALLATION NOTES:

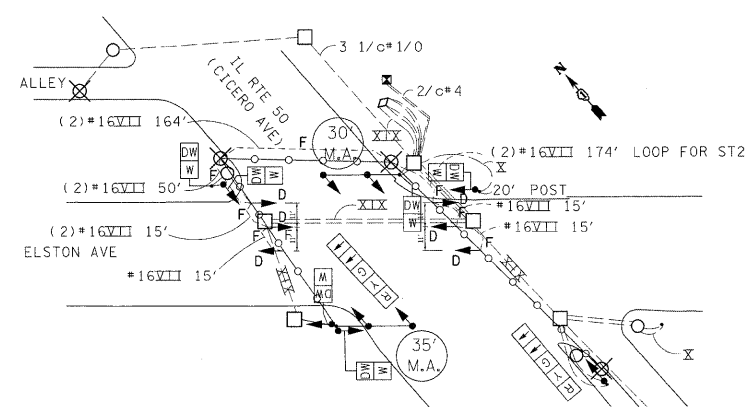
- K - REINSTALL POLE, MAST ARM ASSEMBLY, SIGNAL HEADS, PEDESTRIAN HEADS
- L - REINSTALL STORED SIGNAL ELECTRIC CABLE FROM EXISTING MANHOLE TO SIGNAL AND PEDESTRIAN HEADS
- M - INSTALL FOUNDATION



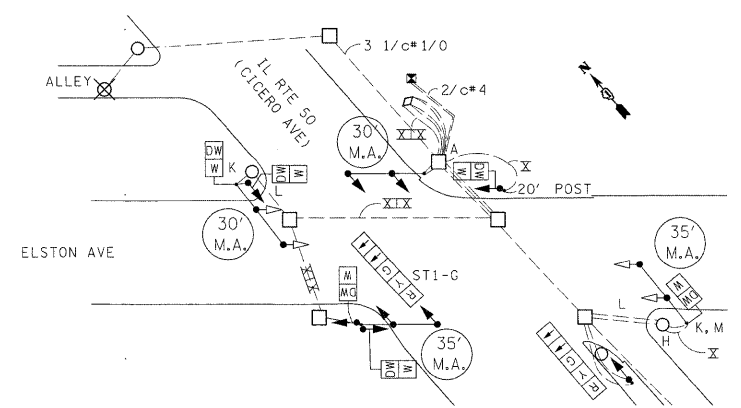
FOUNDATION REMOVAL PLAN  
NOT TO SCALE

REMOVAL NOTES:

- A - REMOVE EXISTING TEMPORARY WOOD POLE
- B - REMOVE EXISTING SPAN AND TETHER WIRE
- C - MANHOLE WITH ADJUSTED FRAME AND LID
- D - REMOVE EXISTING SIGNAL HEADS
- E - REMOVE EXISTING PEDESTRIAN SIGNAL HEADS
- F - REMOVE EXISTING SIGNAL CABLE
- G - UNCOVER AND ENERGIZE EXISTING WESTBOUND SIGNAL HEAD
- H - UNCOVER AND ENERGIZE EXISTING SOUTHBOUND TURN ARROWS
- J - UNCOVER AND ENERGIZE EXISTING PEDESTRIAN SIGNAL HEAD
- K - REMOVE FOUNDATION



SIGNAL AND CABLE REMOVAL PLAN  
NOT TO SCALE



SIGNAL AND CABLE PLAN