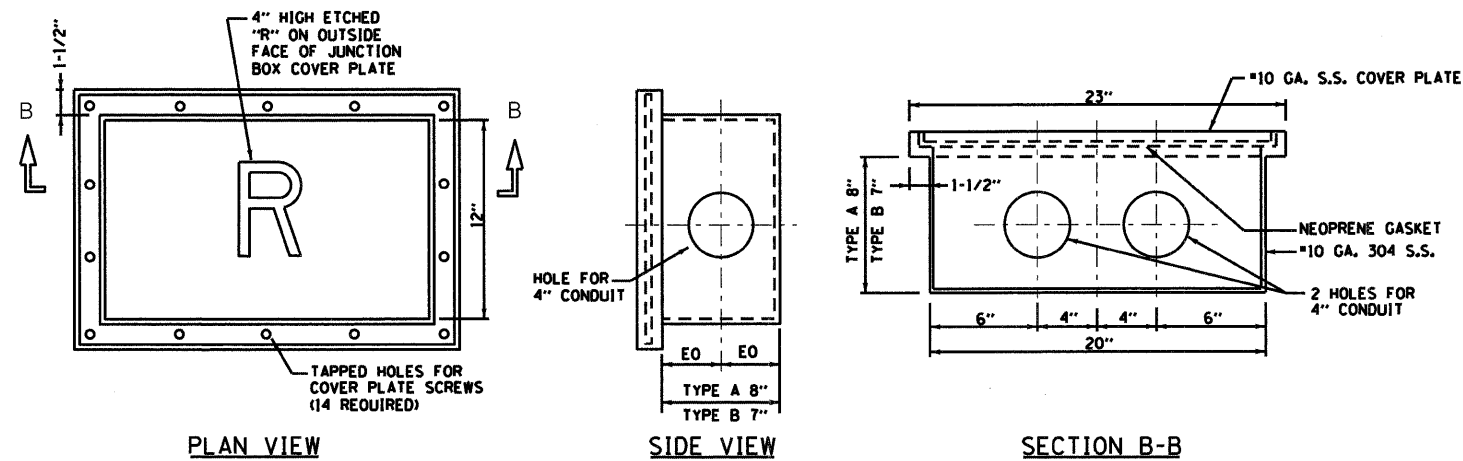
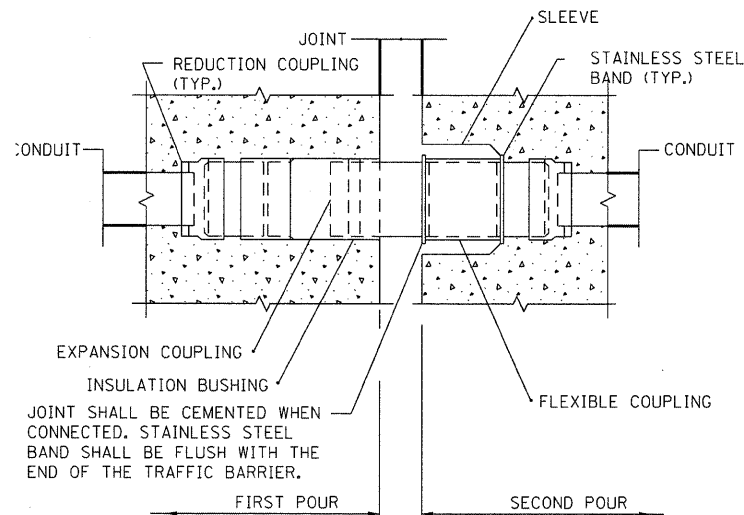


\$PENTBLS\$

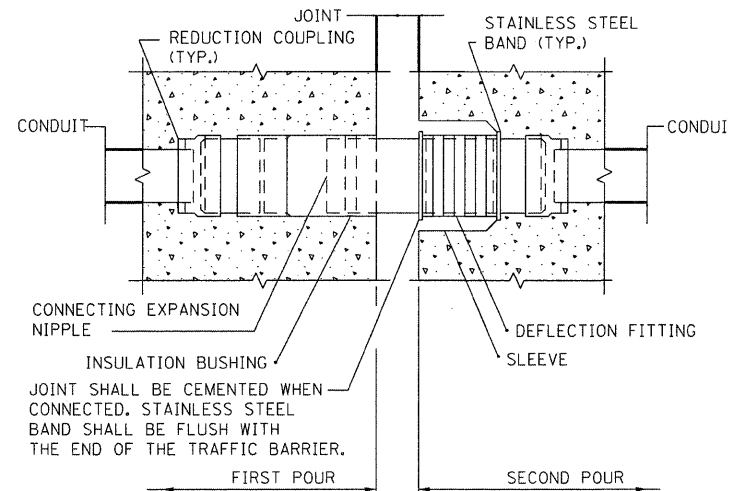
\$PLTDVYS\$



1 JUNCTION BOX DETAIL - TYPES A & B
NO SCALE



2 CONDUIT EXPANSION JOINT
NO SCALE



3 CONDUIT EXPANSION/DEFLECTION JOINT
NO SCALE

NOTES FOR CONDUIT EXP. & EXP./DEFL. JOINTS:

1. ALL MATERIALS (FITTING, COUPLINGS, CONDUIT, ETC.) INCLUDED WITH CONDUIT EMBEDDED IN STRUCTURE.
2. ALL COUPLINGS SHALL BE WATERTIGHT.
3. EXPANSION ASSEMBLY SHALL BE INSTALLED IN ALL EXPANSION JOINTS THAT ARE AT LEAST 1.75" AT 10°C, UNLESS OTHERWISE SHOWN OR AS DIRECTED BY THE ENGINEER. EXPANSION COUPLINGS SHALL HAVE A TOTAL MINIMUM MOVEMENT OF 6" OR THE MOVEMENT CAPACITY OF THE STRUCTURAL JOINT, WHICHEVER IS GREATER. EXPANSION/DEFLECTION ASSEMBLY SHALL BE INSTALLED AS REQUIRED.
4. EXPANSION JOINT LOCATIONS WHEN INDICATED IN THE PLANS, OR AS DIRECTED BY THE ENGINEER, EXPANSION/DEFLECTION COUPLINGS SHALL HAVE A TOTAL LONGITUDINAL MOVEMENT OF 4" OR THE MOVEMENT CAPACITY OF THE STRUCTURAL JOINT, WHICHEVER IS GREATER. THE ROTATIONAL CAPACITY OF THE DEFLECTION FITTING SHALL ALLOW FOR A MINIMUM MOVEMENT OF 1" IN THE TRANSVERSE DIRECTION.

5. EXPANSION AND EXPANSION/DEFLECTION COUPLING TYPES SHALL BE APPROVED BY THE ENGINEER.
6. REFER TO STRUCTURE PLANS FOR LOCATION & SIZE OF EXPANSION JOINTS.
7. REFER TO STRUCTURAL DRAWINGS FOR EACH EXPANSION JOINT LOCATION AND EACH EXPANSION JOINT WIDTH.
8. THE BARREL OF THE FITTING SHALL BE FULLY EMBEDDED IN THE CONCRETE OF ONE SIDE OF THE EXPANSION JOINT.
9. A CAVITY OPENING, IF REQUIRED, SHALL BE 3 IN. LARGER IN DIAMETER AND A MAXIMUM DEPTH OF HALF OF THE DEFLECTION SLEEVE LENGTH. THE DEFLECTION FITTING SHALL BE CENTERED IN THE OPENING AND EMBEDDED IN THE CONCRETE ONLY UP TO THE DEFLECTION FITTING CENTER.

DESIGNED	I. A. B.	REVISED	-
DRAWN	R. B. G.	REVISED	-
CHECKED	A. D. O.	REVISED	-
DATE	MAY 2010	REVISED	-

F.A.I. RTE.	SECTION	COUNTY	TOTAL SHEETS	SHEET NO.
94	0101.8B	COOK	139	62
CONTRACT NO. 60C18				
FED. ROAD DIST. NO. - ILLINOIS FED. AID PROJECT				