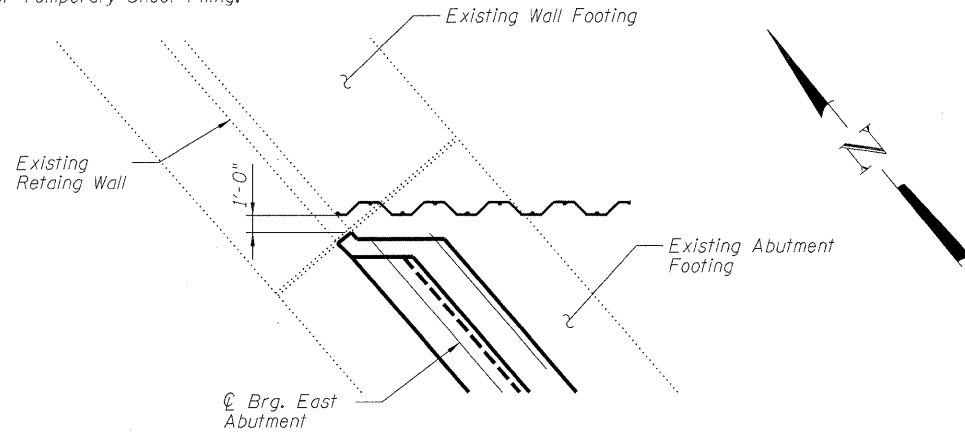
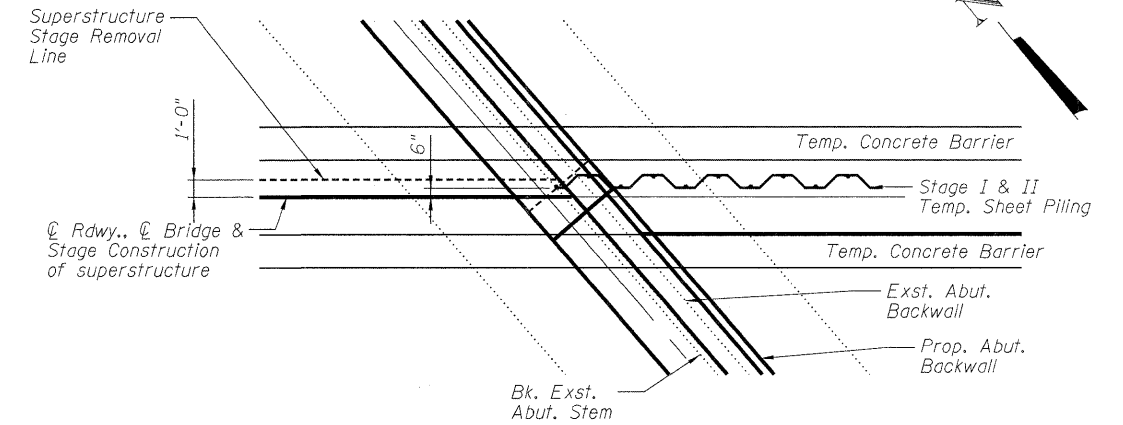


STATE OF ILLINOIS
DEPARTMENT OF TRANSPORTATION

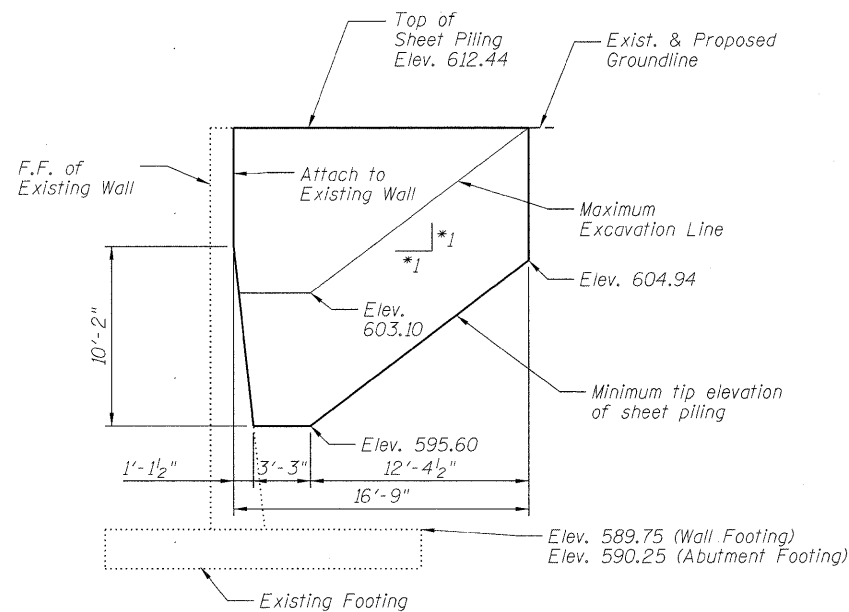
Notes:
If the Contractor chooses to alter the temporary cantilevered sheet piling design requirements shown on the plans, a design submittal including plan details and calculations will be required for review and acceptance by the Engineer.
The Contractor shall connect the first sheet to the existing abutment wall to ensure stability of the sheets driven to the top of the existing footing. This connection shall be reviewed and accepted by the Engineer and included in the cost for Temporary Sheet Piling.



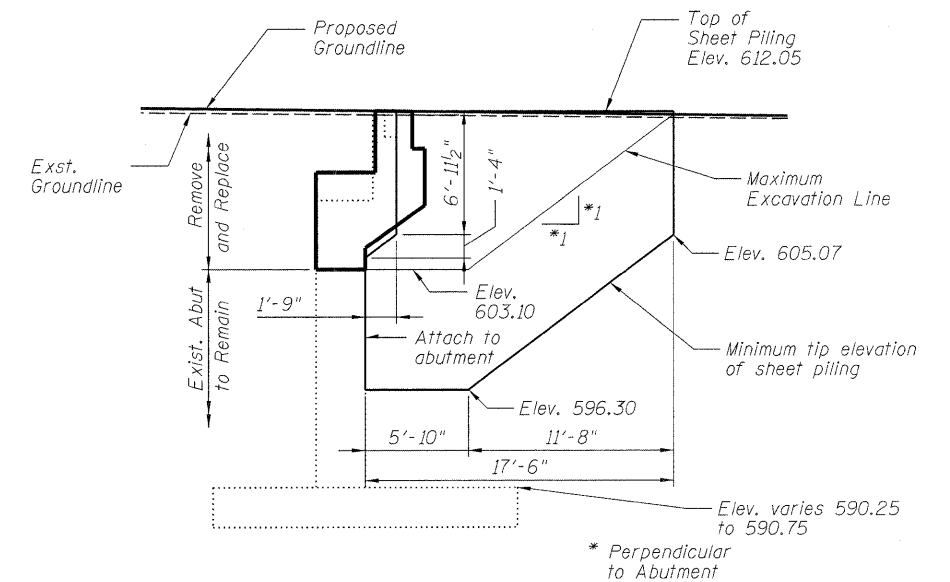
EAST ABUTMENT SHEET PILING PLAN
(North of Abutment - Stage II)



EAST ABUTMENT SHEET PILING PLAN
(at Stage Construction Line - Stage I & II)



EAST ABUTMENT SHEET PILING ELEVATION
(North of Abutment - Stage II)



EAST ABUTMENT - TEMPORARY SHEET PILING
(at Stage Construction Line - Stage I & II)

PROPOSED TEMPORARY SHEET PILING DATA - STAGE II
(North of Abutment - Stage II)

Top Elev. = 612.44
Embedment = 7'-6"
Min. Section Modulus = 5.7 in³/ft

PROPOSED TEMPORARY SHEET PILING DATA - STAGE I & II
(at Stage Construction Line - Stage I & II)

Top Elev. = 612.05
Embedment = 6'-10"
Min. Section Modulus = 4.3 in³/ft

DESIGNED - ASP
CHECKED - DPW
DRAWN - JMH
CHECKED - ASP

DLZ 85 W. Algonquin Rd. Ste. 220
Arlington Heights IL 60005
DLZ Illinois, Inc. (847)-640-0840

SHEET NO. 7 OF 42 SHEETS	F.A. - RTE.	SECTION	COUNTY	TOTAL SHEETS	SHEET NO.
	94	0101.8B	COOK	139	83
			CONTRACT NO. 60C18		
ILLINOIS FED. AID PROJECT					

TEMPORARY SHEET PILING II
STRUCTURE NUMBER 016-0610