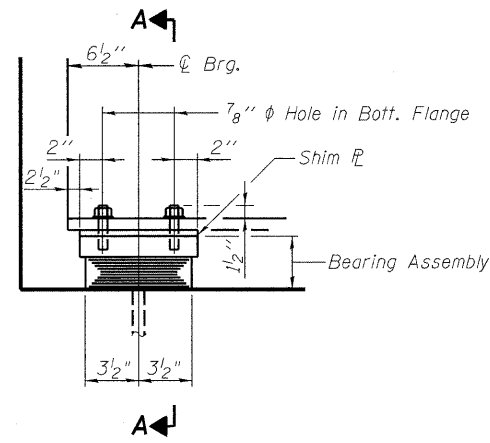
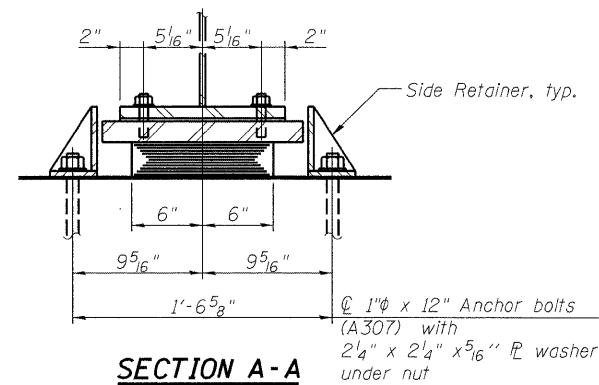


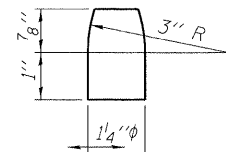
STATE OF ILLINOIS
DEPARTMENT OF TRANSPORTATION



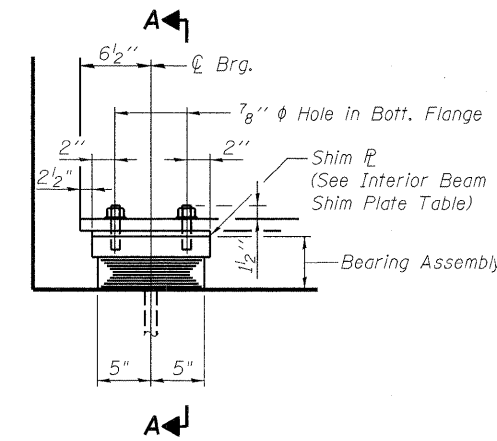
ELEVATION AT ABUT.



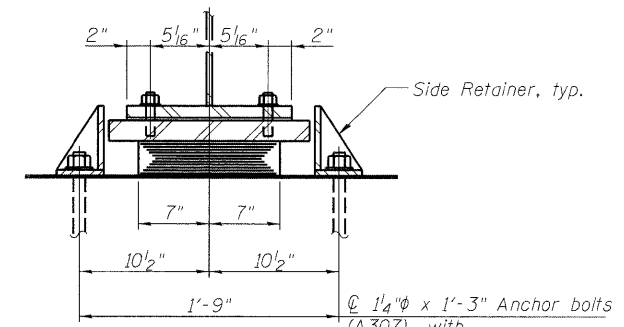
SECTION A-A



PINTLE

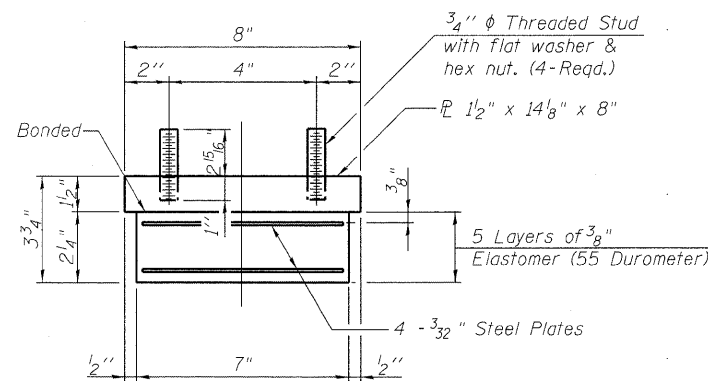


ELEVATION AT ABUT.

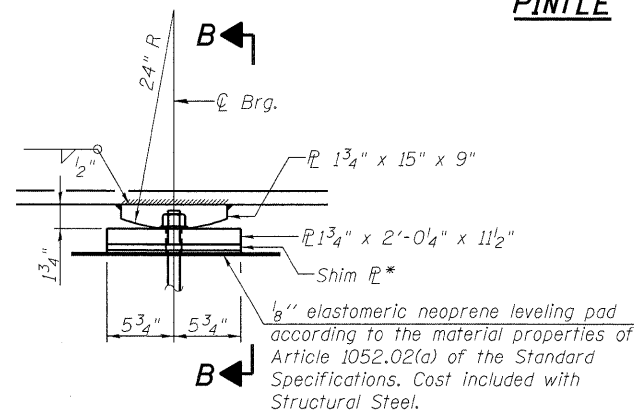


SECTION A-A

TYPE I ELASTOMERIC EXP. BRG. - EXTERIOR BEAMS (1 & 12)



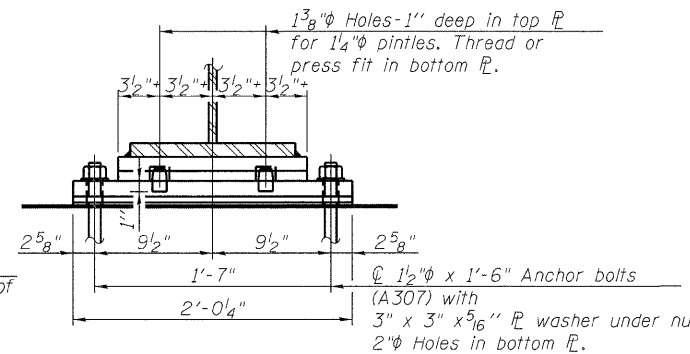
BEARING ASSEMBLY



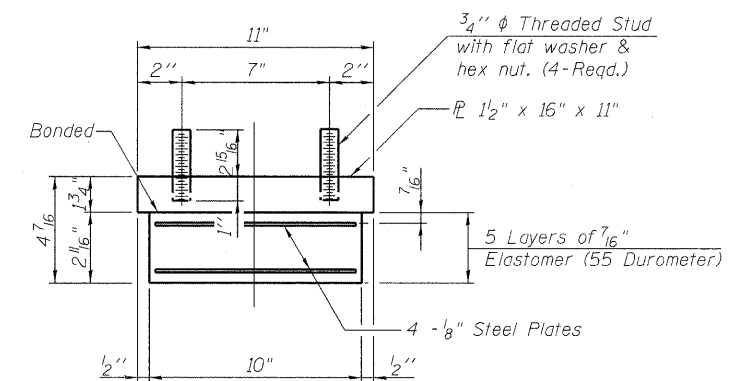
ELEVATION AT PIER

FIXED BEARING

* 1/4" Shim Plate required for beam 6



SECTION B-B



BEARING ASSEMBLY

Note:
Shim plates shall not be placed under Bearing Assembly.

Note:
Shim plates shall not be placed under Bearing Assembly.

Notes:
Anchor bolts shall be ASTM F1554 all-thread (or an Engineer-approved alternate material) of the grade(s) and diameter(s) specified. ASTM A307 Grade C anchor bolts may be used in lieu of ASTM F1554 Grade 36 (Fy=36ksi). The corresponding specified grade of AASHTO M314 anchor bolts may be used in lieu of ASTM F1554.

Anchor bolts at fixed bearings may be either cast in place or installed in holes drilled after the supported member is in place.

Anchor bolts for side retainers may be cast in place or installed in holes drilled before or after members are in place.

Drilled and set anchor bolts shall be installed according to Article 521.06 of the Standard Specifications.

Side retainers, anchor bolts and other steel members required for the bearing assembly shall be included in the cost of Elastomeric Bearing Assembly, Type I.

Steel members and Anchor bolts required for the fixed bearing assembly shall be included in the cost of Furnishing and Erecting Structural Steel.

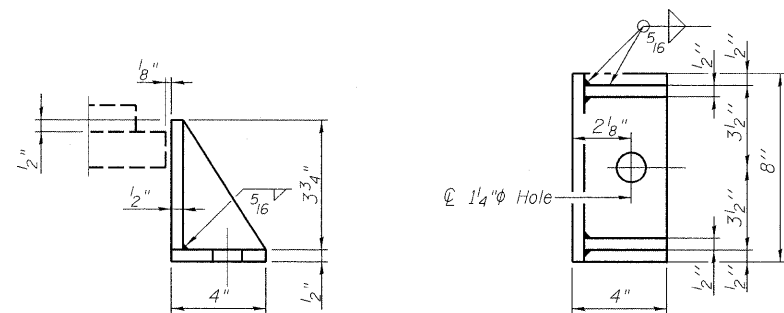
Two 1/8" adjusting shims shall be provided for each bearing in addition to all other plates or shims and placed as shown on bearing details.

All (embedded and separate) bearing plates, side retainers, anchor bolts, nuts, washers and pintles shall be galvanized according to AASHTO M11 or M232 as applicable.

Interior Beam Shim Plate Table			
West Abutment		East Abutment	
Beam No.	Thickness	Beam No.	Thickness
6	1/4"	2	1/4"
7	1/2"	5	5/8"
11	5/8"		

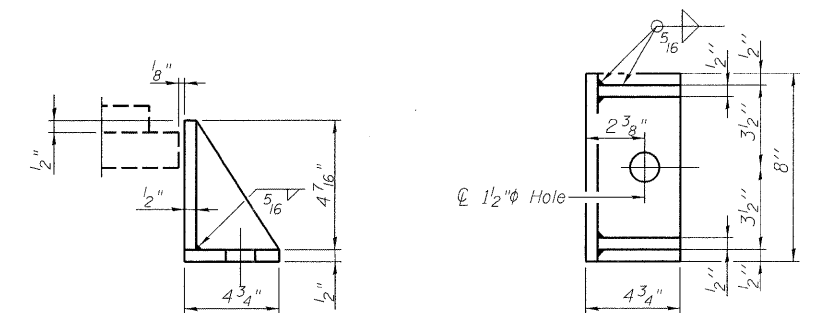
BILL OF MATERIAL

Item	Unit	Total
Elastomeric Bearing Assembly Type I	Each	24



SIDE RETAINER

Equivalent rolled angle with stiffeners will be allowed in lieu of welded plates.



SIDE RETAINER

Equivalent rolled angle with stiffeners will be allowed in lieu of welded plates.

DESIGNED - ASP
CHECKED - WSP
DRAWN - BEM
CHECKED - ASP

BEARING DETAILS
STRUCTURE NUMBER 016-0610

DLZ 85 W. Algonquin Rd. Ste. 220
Arlington Heights IL 60005
DLZ Illinois, Inc. (847)-640-0840

SHEET NO. 24 OF 42 SHEETS	F.A. RTE.	SECTION	COUNTY	TOTAL SHEETS	SHEET NO.
	94	0101.8B	COOK	139	100
CONTRACT NO. 60C18					
ILLINOIS FED. AID PROJECT					