

BILL OF MATERIAL

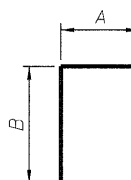
STATE OF ILLINOIS
DEPARTMENT OF TRANSPORTATION

Bar	No.	Size	Length	Shape
d5(E)	70	5	3'-0"	L
h(E)	20	5	46'-1"	—
h1(E)	1	5	44'-8"	—
h2(E)	1	5	44'-0"	—
h3(E)	22	4	23'-5"	—
h4(E)	4	4	31'-6"	—
h5(E)	2	5	42'-8"	—
h6(E)	2	5	41'-3"	—
h7(E)	2	6	42'-8"	—
h8(E)	1	6	34'-4"	—
h9(E)	1	5	34'-4"	—
h10(E)	2	6	8'-7"	—
h11(E)	21	5	44'-4"	—
h12(E)	1	5	45'-9"	—
h13(E)	1	5	46'-6"	—
h14(E)	22	4	24'-3"	—
h15(E)	4	4	23'-7"	—
h16(E)	2	5	45'-0"	—
h17(E)	2	5	46'-6"	—
h18(E)	2	6	45'-0"	—
h19(E)	1	6	38'-9"	—
h20(E)	1	5	38'-9"	—
h21(E)	2	6	8'-7"	—
h22(E)	2	4	8'-7"	—
h23(E)	2	4	9'-4"	—
s(E)	83	6	14'-0"	∩
s1(E)	1	6	14'-1"	∩
s2(E)	1	6	14'-4"	∩
s3(E)	1	6	14'-11"	∩
s4(E)	2	6	15'-7"	∩
s5(E)	2	6	16'-5"	∩
s6(E)	1	6	14'-2"	∩
s7(E)	1	6	14'-6"	∩
s8(E)	1	6	15'-1"	∩
u(E)	22	4	3'-8"	┌
u1(E)	19	4	4'-0"	┌
u2(E)	19	4	3'-4"	┌
u3(E)	22	4	3'-2"	┌
u4(E)	19	4	3'-6"	┌
u5(E)	19	4	4'-8"	┌

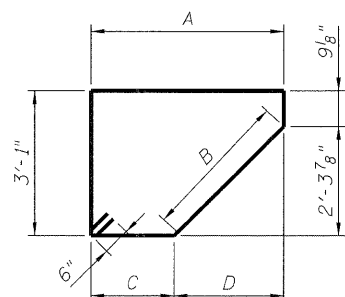
Bar	No.	Size	Length	Shape
v(E)	11	4	18'-7"	—
v1(E)	12	4	19'-1"	—
v2(E)	87	9	18'-7"	—
v3(E)	90	9	19'-1"	—
v4(E)	55	4	6'-3"	L
v5(E)	88	4	5'-8"	—
v6(E)	88	4	3'-9"	—
v7(E)	71	4	4'-2"	—
v8(E)	17	4	3'-10"	—
v9(E)	177	9	10'-4"	—
v10(E)	3	4	21'-5"	—
v11(E)	2	5	21'-5"	—
v12(E)	1	4	19'-1"	—
v13(E)	2	4	3'-9"	—
v14(E)	2	4	21'-2"	—
v15(E)	2	5	21'-2"	—
v16(E)	4	4	18'-9"	—
v17(E)	4	4	3'-9"	—
v18(E)	14	4	4'-8"	—
v19(E)	4	4	4'-9"	—
v20(E)	1	4	5'-1"	—
v21(E)	3	4	5'-2"	—
Porous Granular Embankment, Special			Cu. Yd.	214
Concrete Removal			Cu. Yd.	146.4
Structure Excavation			Cu. Yd.	669
Concrete Structures			Cu. Yd.	176.6
Concrete Superstructures			Cu. Yd.	10.0
Reinforcement Bars, Epoxy Coated			Pound	25,525
Bar Splicers			Each	45
Concrete Sealer			Sq. Ft.	540
Geocomposite Wall Drain			Sq. Yd.	188

BAR DIMENSIONS

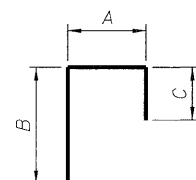
Bar	A	B	C	D
d5(E)	1'-0"	2'-0"		
s(E)	4'-1"	3'-3 ³ / ₈ "	1'-9 ¹ / ₈ "	2'-3 ⁷ / ₈ "
s1(E)	4'-1 ³ / ₈ "	3'-3 ¹ / ₂ "	1'-9 ³ / ₈ "	2'-4"
s2(E)	4'-3 ³ / ₈ "	3'-4 ¹ / ₂ "	1'-10 ¹ / ₈ "	2'-5 ¹ / ₈ "
s3(E)	4'-6 ³ / ₄ "	3'-5 ³ / ₄ "	1'-11 ⁵ / ₈ "	2'-7 ¹ / ₈ "
s4(E)	4'-11 ¹ / ₄ "	3'-7 ⁷ / ₈ "	2'-1 ⁵ / ₈ "	2'-9 ⁵ / ₈ "
s5(E)	5'-4 ³ / ₄ "	3'-10 ¹ / ₈ "	2'-4"	3'-0 ³ / ₄ "
s6(E)	4'-1 ⁷ / ₈ "	3'-3 ³ / ₄ "	1'-9 ¹ / ₂ "	2'-4 ³ / ₈ "
s7(E)	4'-4 ³ / ₈ "	3'-4 ³ / ₄ "	1'-10 ⁵ / ₈ "	2'-5 ³ / ₄ "
s8(E)	4'-8 ¹ / ₈ "	3'-6 ¹ / ₄ "	2'-0 ¹ / ₄ "	2'-7 ¹ / ₈ "
u	8 ¹ / ₂ "	1'-10 ¹ / ₂ "	1'-1"	
u1	2'-6"	1'-6"	11 ³ / ₄ "	1'-1 ⁵ / ₈ "
u2	1'-10"	1'-6"	11 ³ / ₄ "	1'-1 ⁵ / ₈ "
u3	8 ¹ / ₂ "	1'-6 ¹ / ₂ "	11"	
v4	2'-2"	4'-1"		
v6	2'-11"	10"	7 ¹ / ₈ "	7 ¹ / ₈ "
v18	1'-8"			
v19	1'-9"			
v20	2'-1"			
v21	2'-2"			



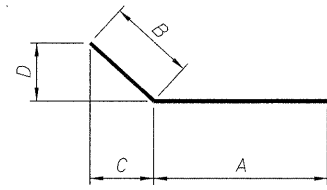
BARS d5(E) AND v4(E)



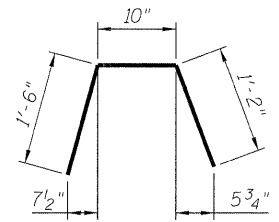
BARS s(E) THRU s8(E)



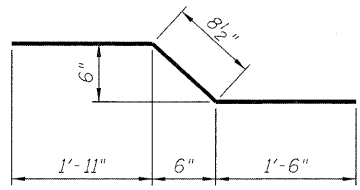
BAR u(E) and u3(E)



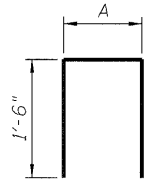
BARS u1(E) THRU u2(E) AND v6(E)



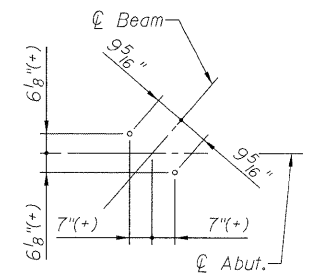
BAR u4(E)



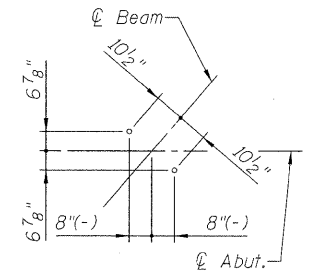
BAR v7(E)



BARS v18(E) THRU v21(E)

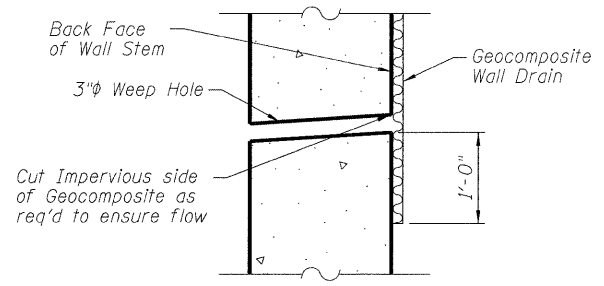


Exterior Beams



Interior Beams

ANCHOR BOLT DETAIL



WEEP HOLE DRAIN DETAIL

(Typical spacing = 8'-0")

DESIGNED - ASP
CHECKED - DPW
DRAWN - BEM
CHECKED - ASP

**WEST ABUTMENT III
STRUCTURE NUMBER 016-0610**

DLZ 85 W. Algonquin Rd. Ste. 220
Arlington Heights IL 60005
DLZ Illinois, Inc. (847)-640-0840

SHEET NO. 27 OF 42 SHEETS	F.A. RTE.	SECTION	COUNTY	TOTAL SHEETS	SHEET NO.
	94	0101.8B	COOK	139	103
			CONTRACT NO. 60C18		
ILLINOIS FED. AID PROJECT					