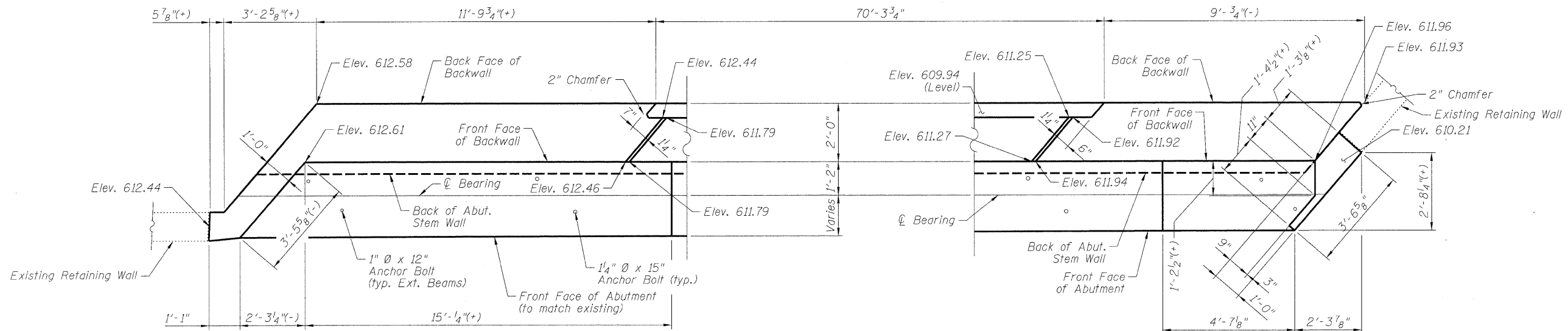
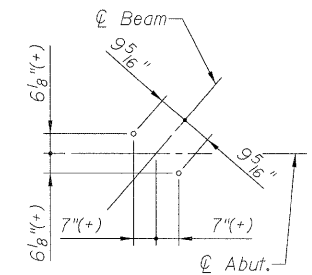


STATE OF ILLINOIS  
DEPARTMENT OF TRANSPORTATION

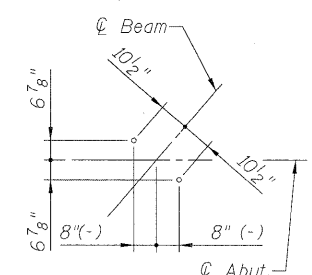


**DETAIL 'A' - PLAN**  
**EAST ABUTMENT - NORTH END**

**DETAIL 'B' - PLAN**  
**EAST ABUTMENT - SOUTH END**

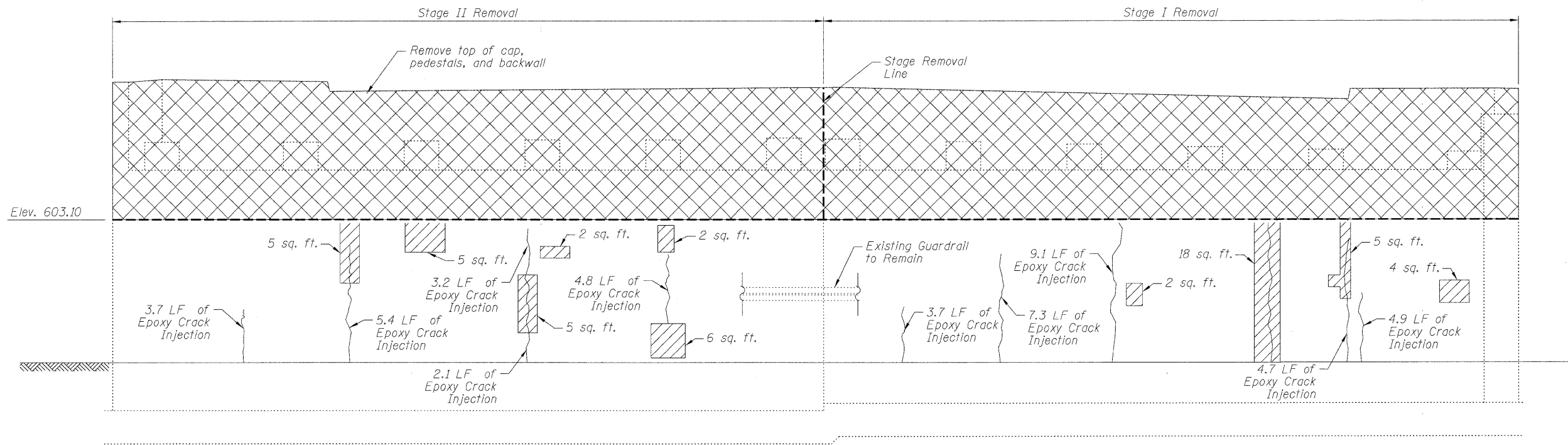


**Exterior Beams**

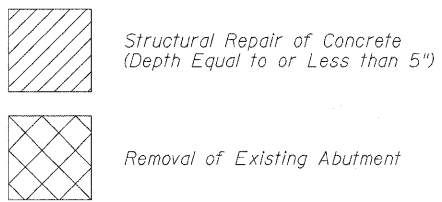


**Interior Beams**

**ANCHOR BOLT DETAIL**



**ELEVATION VIEW (EXISTING)**  
(Looking Ahead)



DESIGNED - ASP
CHECKED - DPW
DRAWN - LNB
CHECKED - ASP

**EAST ABUTMENT I**  
**STRUCTURE NUMBER 016-0610**

**DLZ** 85 W. Algonquin Rd. Ste. 220  
Arlington Heights IL 60005  
(847)-640-0840

SHEET NO. 28 OF 42 SHEETS	F.A. RTE. 94	SECTION 0101.8B	COUNTY COOK	TOTAL SHEETS 139	SHEET NO. 104
	CONTRACT NO. 60C18				
ILLINOIS FED. AID PROJECT					