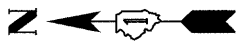
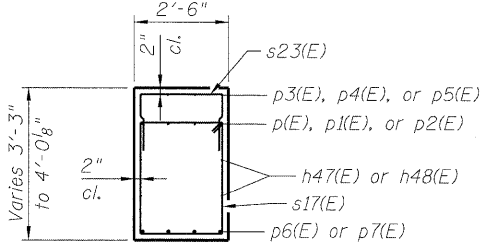
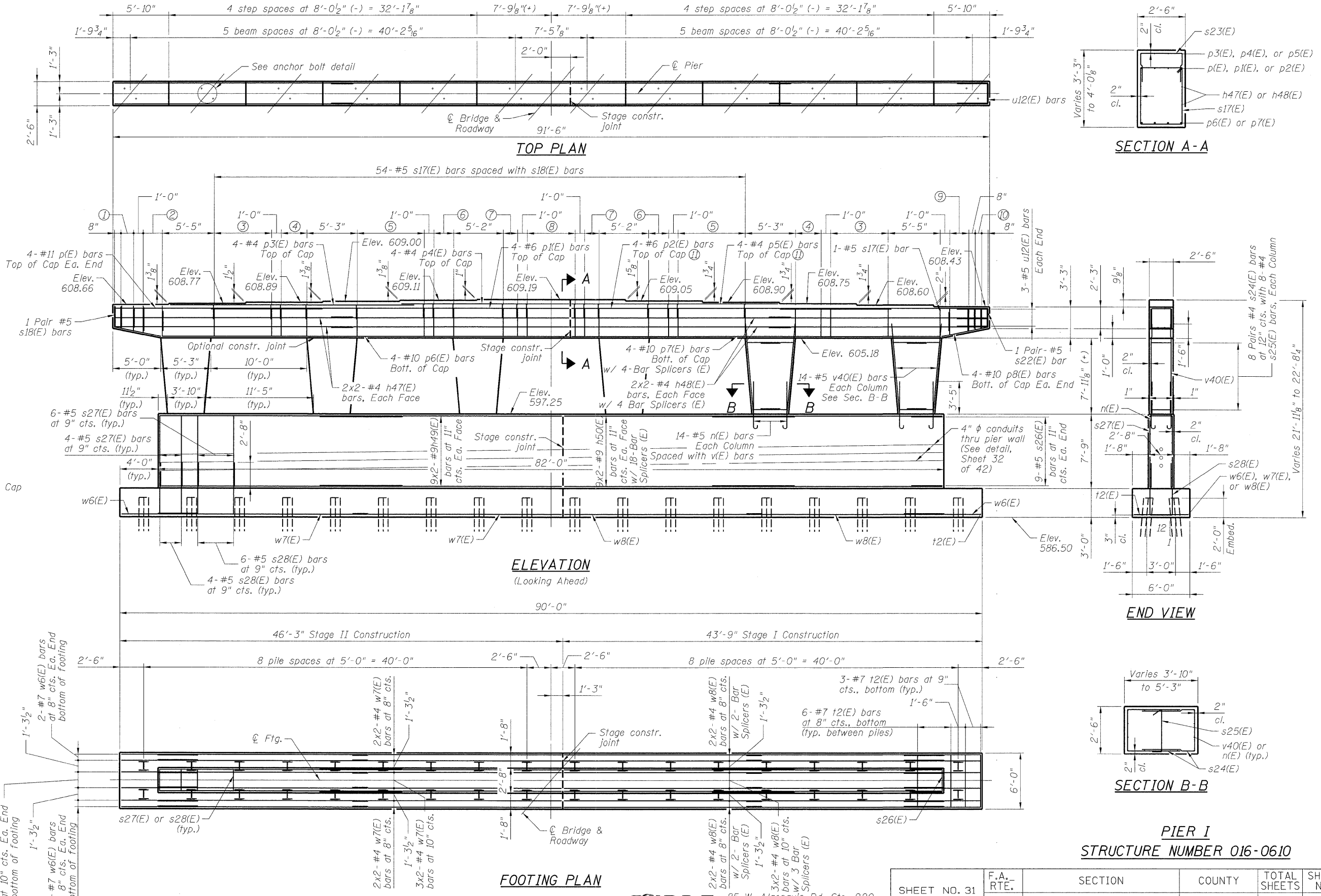


STATE OF ILLINOIS
DEPARTMENT OF TRANSPORTATION

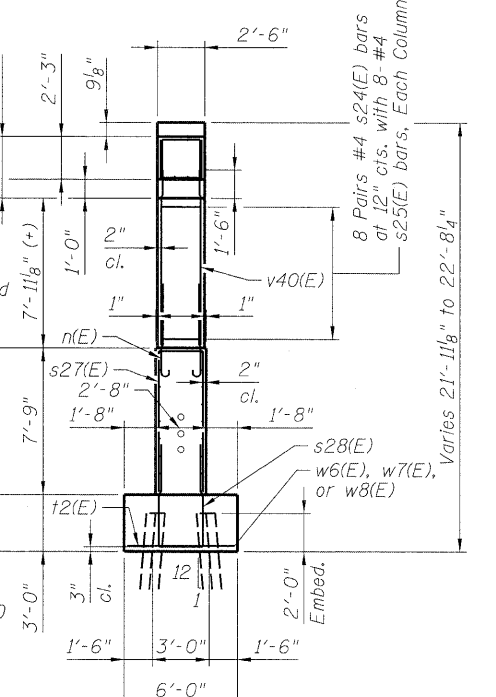


Notes:
Space reinforcement in cap to miss anchor bolts.
Pour steps monolithically with cap.
For details of piles, see sheet 39 of 42.
Concrete Sealer shall be applied to all exposed surfaces of the pier.

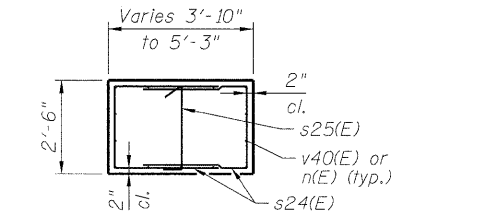
- ① 3 Pairs #5 s19(E) bars at 8" cts.
- ② 3 Pairs #5 s20(E) bars at 12" cts.
- ③ 7-#5 s17(E) bars at 12" cts.
- ④ 5-#5 s17(E) bars at 8" cts.
- ⑤ 8-#5 s17(E) bars at 12" cts.
- ⑥ 6-#5 s17(E) bars at 5" cts.
- ⑦ 4-#5 s17(E) bars at 6" cts.
- ⑧ 6-#5 s17(E) bars at 12" cts.
- ⑨ 3 Pairs #5 s21(E) bars at 12" cts.
- ⑩ 2 Pairs #5 s18(E) bars at 8" cts.
- ⑪ w/ 4-Bar Splicers (E)



SECTION A-A

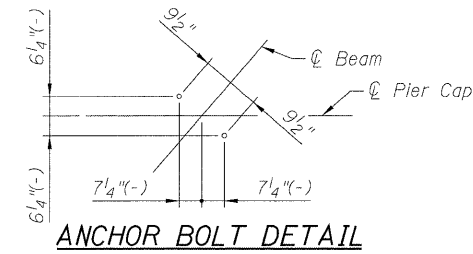


END VIEW



SECTION B-B

PIER I
STRUCTURE NUMBER 016-0610



ANCHOR BOLT DETAIL

Bars indicated thus 9x2-#9 etc., indicates 9 lines of bars with 2 lengths per line.

PILE DATA

Type: HP 12 x 53
Nominal Required Bearing: 360 kips
Factored Resistance Available: 160 kips
Est. Length: 37.5 feet
No. Production Piles: 35
No. Test Piles: 1
Req. Tip Elev. = 551.20

| |
|----------------|
| DESIGNED - ASP |
| CHECKED - DPW |
| DRAWN - LNB |
| CHECKED - ASP |

| | | | | | |
|---------------------------------|--------------------|--------------------|----------------|---------------------|------------------|
| SHEET NO. 31 OF 42 SHEETS | F.A. RTE. 94 | SECTION 0101.8B | COUNTY COOK | TOTAL SHEETS 139 | SHEET NO. 107 |
| | CONTRACT NO. 60C18 | | | | |
| ILLINOIS FED. AID PROJECT | | | | | |

DLZ
85 W. Algonquin Rd. Ste. 220
Arlington Heights IL 60005
DLZ Illinois, Inc. (847)-640-0840

FOOTING PLAN