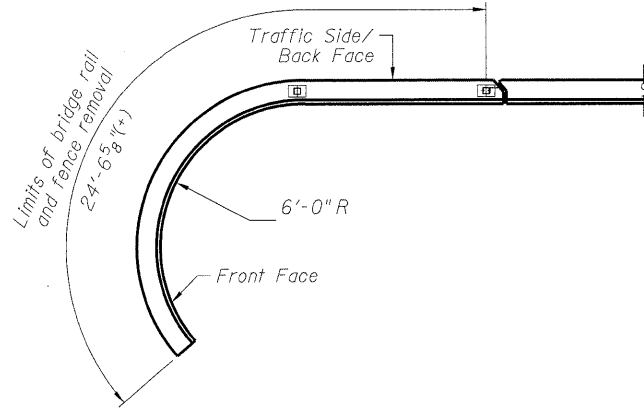
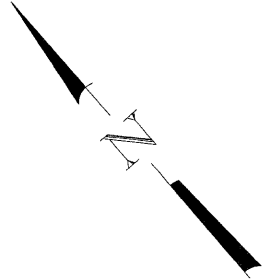
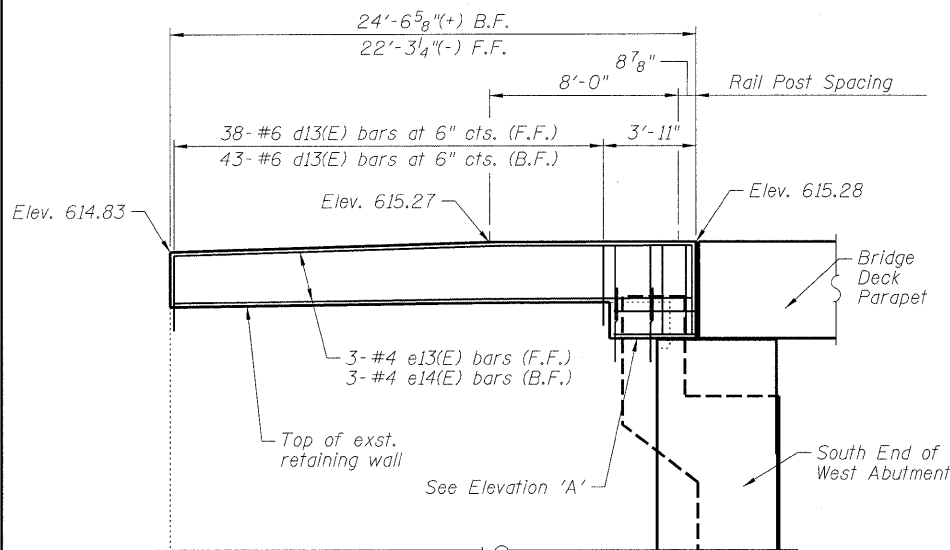


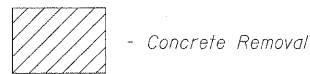
STATE OF ILLINOIS
DEPARTMENT OF TRANSPORTATION



SOUTHWEST WALL PLAN



SOUTHWEST WALL ELEVATION (DEVELOPED)



Legend
F.F. denotes front face
B.F. denotes back face
E.F. denotes each face

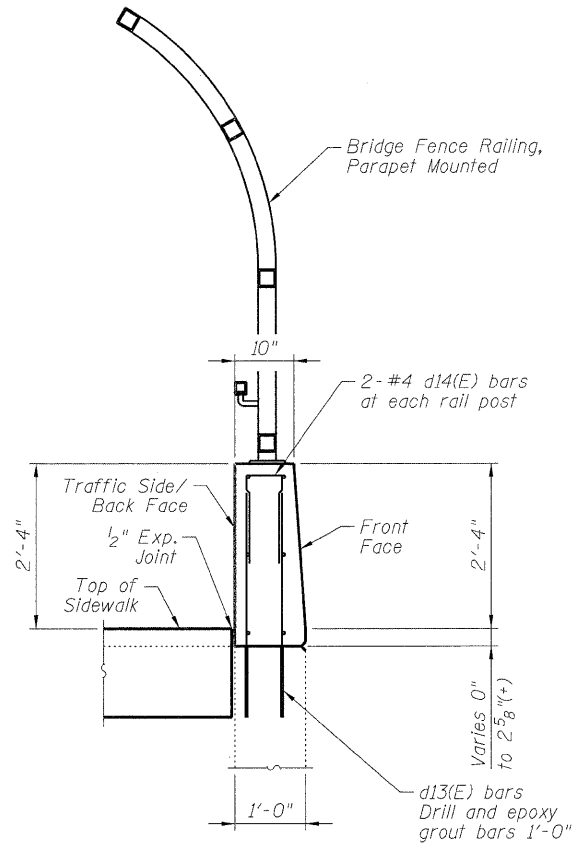
DESIGNED - ASP
CHECKED - DPW
DRAWN - JMH
CHECKED - ASP

Notes:

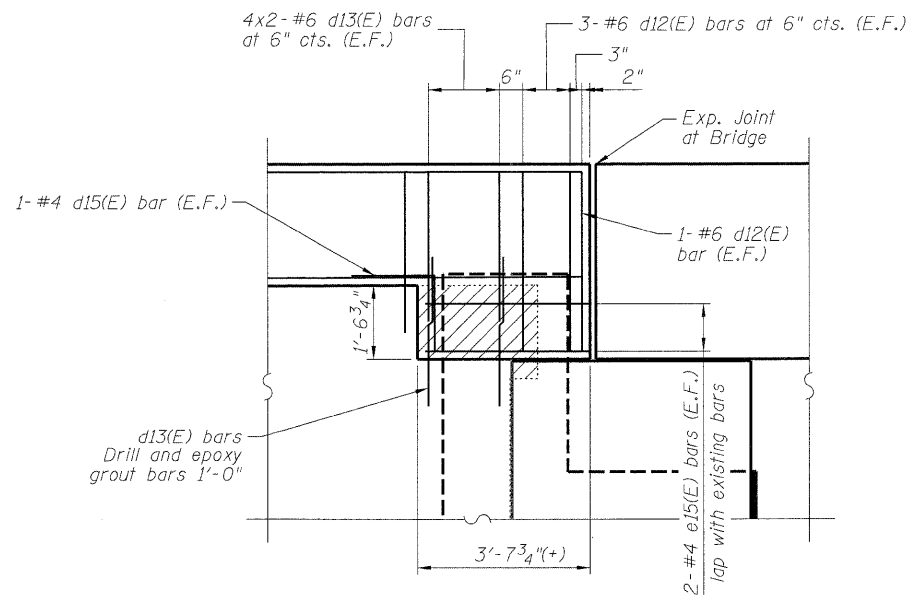
The cost of Existing Bridge Rail Removal and Fence Removal is included in the cost of Removal of Existing Superstructure. See Special Provision.

Bars indicated thus 4x2 - #6 etc. indicates 4 lines of bars with 2 lengths per line.

Reinforcement bars that are to be reused in the proposed wall shall be cleaned and straightened.



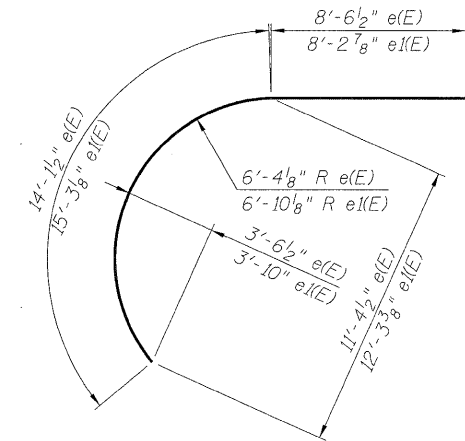
SECTION THRU TOP OF RETAINING WALL



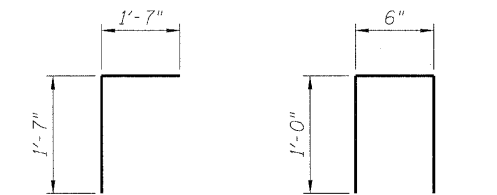
ELEVATION 'A'

BILL OF MATERIAL

Bar	No.	Size	Length	Shape
d12(E)	8	6	3'-9"	—
d13(E)	97	6	3'-2"	—
d14(E)	4	4	2'-6"	⊓
d15(E)	2	4	3'-2"	└
e13(E)	3	4	22'-8"	—
e14(E)	3	4	23'-6"	—
e15(E)	4	4	3'-4"	—
Concrete Removal			Cu. Yd.	0.2
Concrete Structures			Cu. Yd.	2.4
Bridge Fence Railing			Foot	9
Reinforcement Bars, Epoxy Coated			Pound	619
Protective Coat			Sq. Yd.	9



BARS e13(E) AND e14(E)



BAR d15(E)

BAR d14(E)

**SOUTHWEST PARAPET WALL
STRUCTURE NUMBER 016-0610**

SHEET NO. 35 OF 42 SHEETS	F.A. RTE.	SECTION	COUNTY	TOTAL SHEETS	SHEET NO.
	94	0101.8B	COOK	139	111
CONTRACT NO. 60C18					
ILLINOIS FED. AID PROJECT					

DLZ 85 W. Algonquin Rd. Ste. 220
Arlington Heights IL 60005
DLZ Illinois, Inc. (847)-640-0840