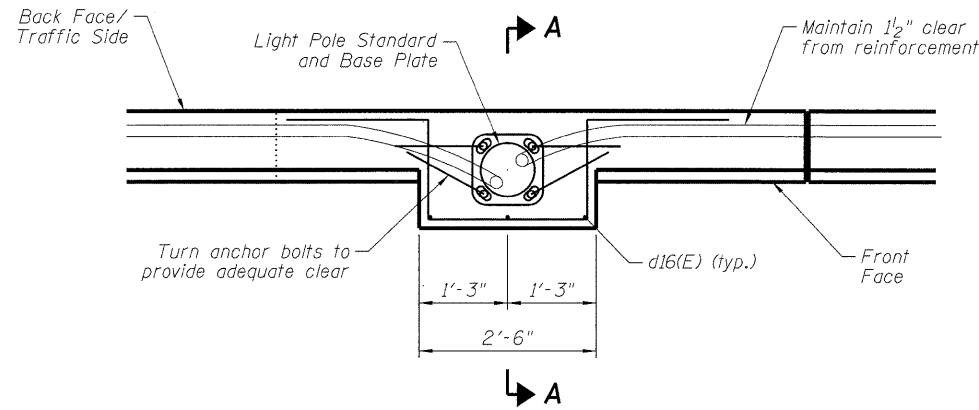
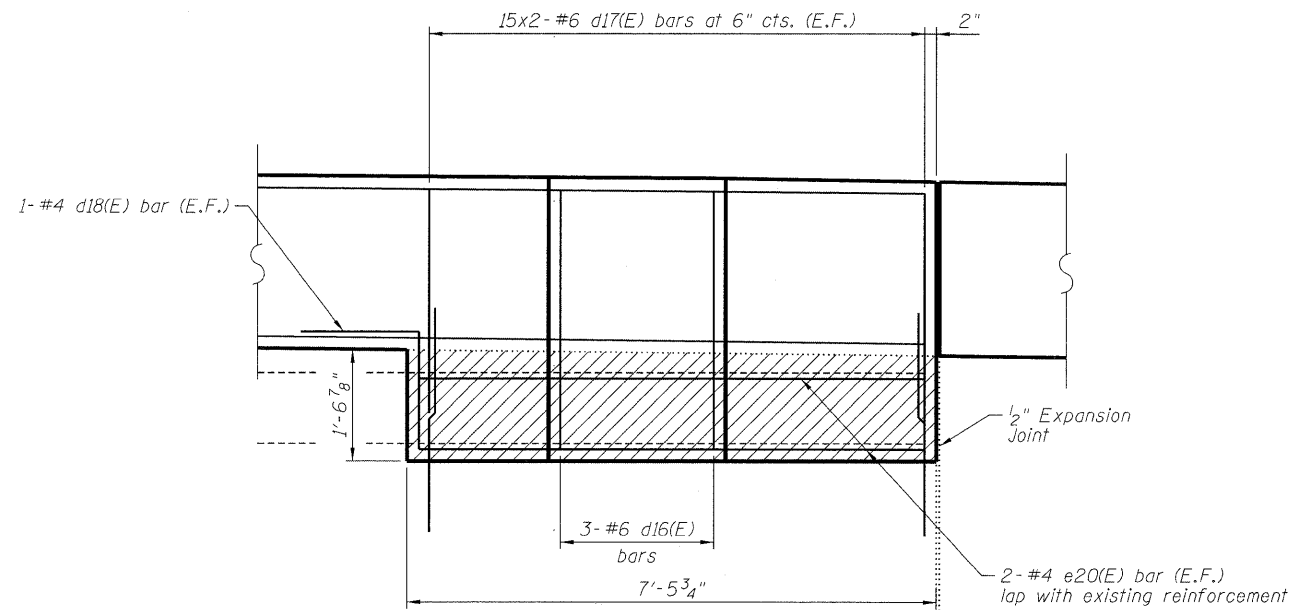


STATE OF ILLINOIS
DEPARTMENT OF TRANSPORTATION



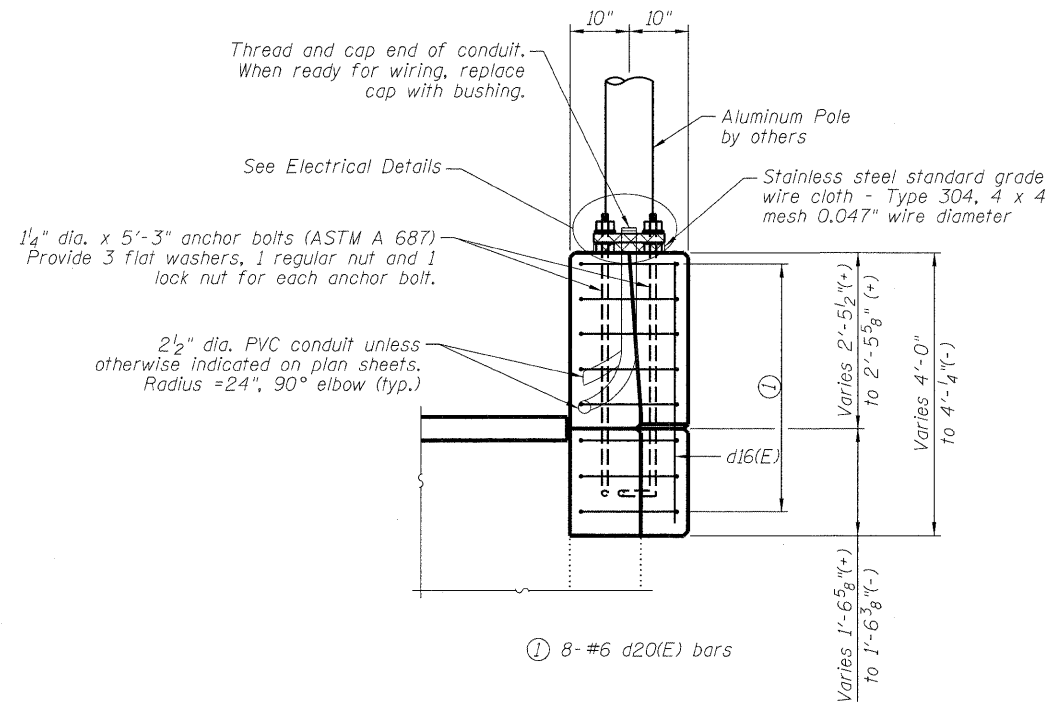
LIGHT POLE BLISTER PLAN



ELEVATION 'B'

- Concrete Removal

| |
|----------------|
| DESIGNED - ASP |
| CHECKED - DPW |
| DRAWN - LNB |
| CHECKED - ASP |

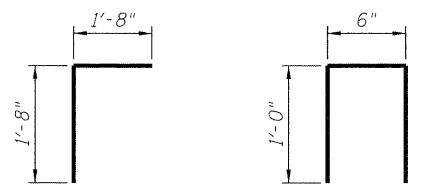


① 8-#6 d20(E) bars

SECTION A-A

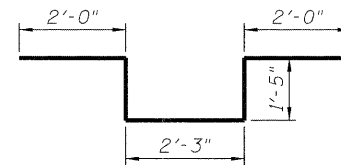
Notes:

1. Level light pole plates, using the flange nuts, prior to pouring the parapet wall. The top of the plate shall be at the same elevation as the finished concrete parapet.
2. The cost of anchor bolts, conduit, base plate and foundation is included in the cost of Concrete Superstructure.



BAR d18(E)

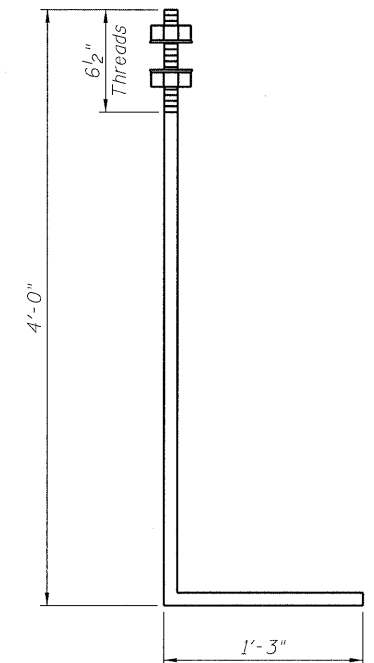
BAR d19(E)



BAR d20(E)

BILL OF MATERIAL

| Bar | No. | Size | Length | Shape |
|----------------------------------|-----|---------|---------|-------|
| d16(E) | 7 | 6 | 3'-7" | — |
| d17(E) | 306 | 6 | 3'-2" | — |
| d18(E) | 4 | 4 | 3'-4" | — |
| d19(E) | 18 | 4 | 2'-6" | — |
| d20(E) | 8 | 6 | 9'-1" | — |
| e16(E) | 6 | 4 | 19'-6" | — |
| e17(E) | 6 | 4 | 21'-10" | — |
| e18(E) | 6 | 4 | 27'-4" | — |
| e19(E) | 4 | 4 | 2'-6" | — |
| e20(E) | 4 | 4 | 7'-1" | — |
| Concrete Removal | | Cu. Yd. | 0.6 | |
| Concrete Structures | | Cu. Yd. | 6.3 | |
| Bridge Fence Railing | | Foot | 67 | |
| Reinforcement Bars, Epoxy Coated | | Pound | 1,942 | |
| Protective Coat | | Sq. Yd. | 24 | |



1/4" DIA. ANCHOR BOLT

**SOUTHEAST PARAPET WALL II
STRUCTURE NUMBER 016-0610**

| | | | | | |
|---------------------------------|-----------|---------|--------------------|--------------|-----------|
| SHEET NO. 37 OF 42 SHEETS | F.A. RTE. | SECTION | COUNTY | TOTAL SHEETS | SHEET NO. |
| | 94 | 0101.8B | COOK | 139 | 113 |
| | | | CONTRACT NO. 60C18 | | |
| ILLINOIS FED. AID PROJECT | | | | | |

DLZ 85 W. Algonquin Rd. Ste. 220
Arlington Heights IL 60005
DLZ Illinois, Inc. (847)-640-0840