

F.A.I. RTE.	SECTION	COUNTY	TOTAL SHEETS	SHEET NO.
55	(99-1&2)AC-3	WILL	524	1
FED. ROAD DIST. NO. 1	ILLINOIS	CONTRACT NO.	60C31	

STATE OF ILLINOIS

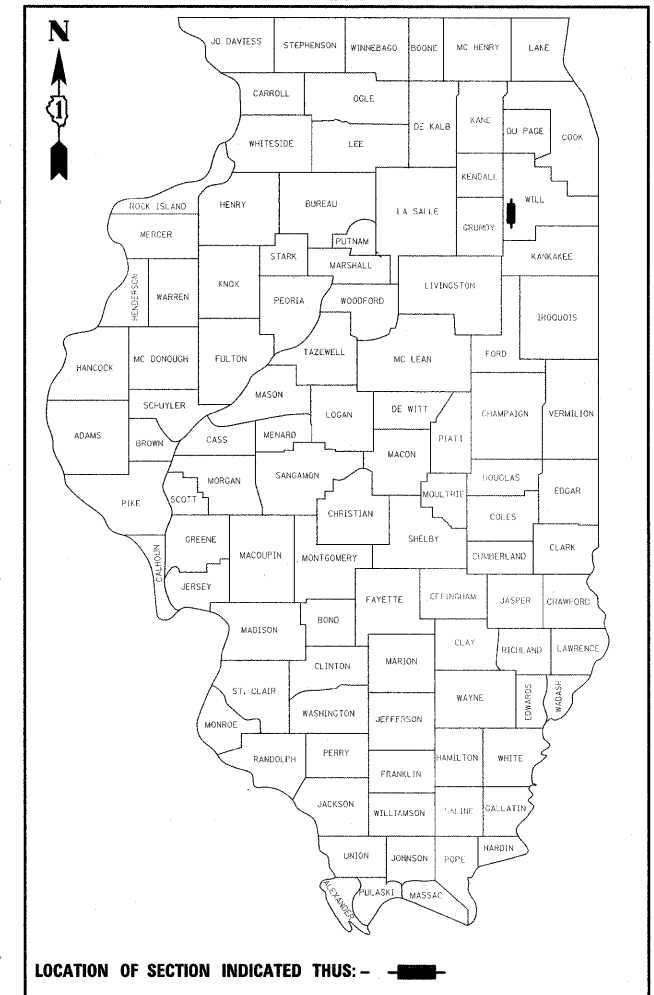
DEPARTMENT OF TRANSPORTATION

DIVISION OF HIGHWAYS

PROPOSED HIGHWAY PLANS

ROUTE FAI 55 (I-55)  
SECTION (99-1&2)AC-3  
PROJECT: ACIM-055-6(239)243  
I-55 AT ARSENAL ROAD  
INTERCHANGE RAMP AND  
FRONTAGE ROAD CONSTRUCTION  
WILL COUNTY  
C-91-200-07

D-91-200-07



FOR INDEX OF SHEETS, SEE SHEET NO. 2 (VOLUME I)  
FOR INDEX OF SHEETS, SEE SHEET NO. 301 (VOLUME II)

STATION EQUATIONS:

STA 5025+24.74 BK C WEST FRONTAGE ROAD =  
STA 4000+00.00, 12.00' LT AH B RAMP D =  
STA 6000+00.00 AH C WEST FRONTAGE CONNECTOR

STA 2038+02.19 BK C RAMP C (PT) =  
STA 100+00.00 AH C RAMP E (PC) =  
STA 7021+82.16, 36.00' RT BK B RAMP A

STA 126+08.25, 21.00' LT BK END C RAMP E =  
STA 3000+00.00, 21.00' LT AH C RAMP B =  
STA 900+00.00 AH C ARSENAL ROAD =  
STA 1050+03.08, 146.78' RT C I-55

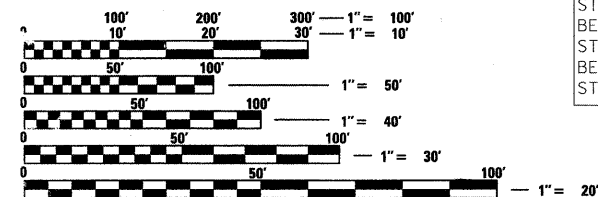
VOLUME I

DESIGN DESIGNATION

I-55 RAMP A	5700(10) INTERSTATE - CLASS II TRUCK ROUTE 11.34 (JPCP-20)
I-55 RAMP B	18500(10) INTERSTATE - CLASS I TRUCK ROUTE 18.20 (JPCP-20)
I-55 RAMP C	18500(10) INTERSTATE - CLASS I TRUCK ROUTE 18.20 (JPCP-20)
I-55 RAMP D	5400(10) INTERSTATE - CLASS II TRUCK ROUTE 11.34 (JPCP-20)
I-55 RAMP E	24200(10) INTERSTATE - CLASS I TRUCK ROUTE 18.20 (JPCP-20)
ARSENAL ROAD	35900(10) SUBURBAN STRATEGIC REGIONAL ARTERIAL (SRA) - CLASS I TRUCK ROUTE 22.47 (JPCP-20)
EAST FRONTAGE ROAD	3400(10) COLLECTOR STREET 3.20 (BIT-20)
WEST FRONTAGE CONNECTOR	4900(10) COLLECTOR STREET 4.63 (JPCP-20)
WEST FRONTAGE ROAD	4900(10) COLLECTOR STREET 3.20 (BIT-20)

DESIGN SPEED:

I-55 = 70 MPH
ARSENAL ROAD = 50 MPH
EAST FRONTAGE ROAD = 50 MPH
WEST FRONTAGE CONNECTOR = 50 MPH
WEST FRONTAGE ROAD = 50 MPH
RAMP A, C, D & E = 50 MPH
RAMP B = 40 MPH



FULL SIZE PLANS HAVE BEEN PREPARED USING STANDARD ENGINEERING SCALES. REDUCED SIZED PLANS WILL NOT CONFORM TO STANDARD SCALES. IN MAKING MEASUREMENTS ON REDUCED PLANS, THE ABOVE SCALES MAY BE USED.

J.U.L.I.E.  
JOINT UTILITY LOCATION INFORMATION FOR EXCAVATION  
1-800-892-0123  
OR 811



Expires: 11/30/11



Expires: 11/30/11



Expires: 11/30/11

LOCATION MAP  
SCALE= 1:2400

LENGTH OF PROJECT

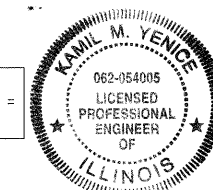
ARSENAL ROAD = 1,975.00 FT = 0.374 MI
WEST FRONTAGE CONNECTOR = 7,754.15 FT = 1.469 MI
WEST FRONTAGE ROAD = 3,195.27 FT = 0.605 MI
EAST FRONTAGE ROAD = 6,036.54 FT = 1.143 MI
RAMP D = 920.92 FT = 0.174 MI
GROSS AND NET LENGTH = 19,881.88 FT = 3.765 MI



SIGNATURE: Sadhu Singh Rikhiraj  
DATE: 11/30/2011  
NAME: SADHU SINGH RIKHIRAJ  
EXP. 11/30/2011  
SHEETS 144-183



SIGNATURE: Richard A. Young  
DATE: 11/30/2011  
NAME: RICHARD A. YOUNG  
EXP. 11/30/2011  
SHEETS 87-124



SIGNATURE: Kamil Yence  
DATE: 11/30/2011  
NAME: KAMIL YENCE  
EXP. 11/30/2011  
SHEETS 291-298

STATE OF ILLINOIS  
DEPARTMENT OF TRANSPORTATION  
DIVISION OF HIGHWAYS

SUBMITTED DECEMBER 11, 2009  
Diana M. O'Keefe  
DEPUTY DIRECTOR OF HIGHWAYS, REGION ENGINEER  
January 29, 2010  
Scott E. Stitt, P.E.  
ADJ. ENGINEER OF DESIGN AND ENVIRONMENT  
January 29, 2010  
Christine M. Reed  
DIRECTOR OF HIGHWAYS, CHIEF ENGINEER

PRINTED BY THE AUTHORITY  
OF THE STATE OF ILLINOIS

STRICT 1 NO. (847) 705-4523  
PROJECT ENGINEER: HELEN PAZON

SIGNATURE: Alan R. Swanson  
DATE: 11/30/2011  
NAME: ALAN SWANSON  
EXP. 11/30/2011  
SHEETS 1-86, 125-143, 184-198, 236-290, 299-301, 357-524

SIGNATURE: Gerald E. Koylass  
DATE: 11/30/2011  
NAME: GERALD E. KOYLASS  
EXP. 11/30/2011  
SHEETS 302-322

SIGNATURE: Steven C. Poland  
DATE: 11/30/2011  
NAME: STEVEN C. POLAND  
EXP. 11/30/2011  
SHEETS 323-341