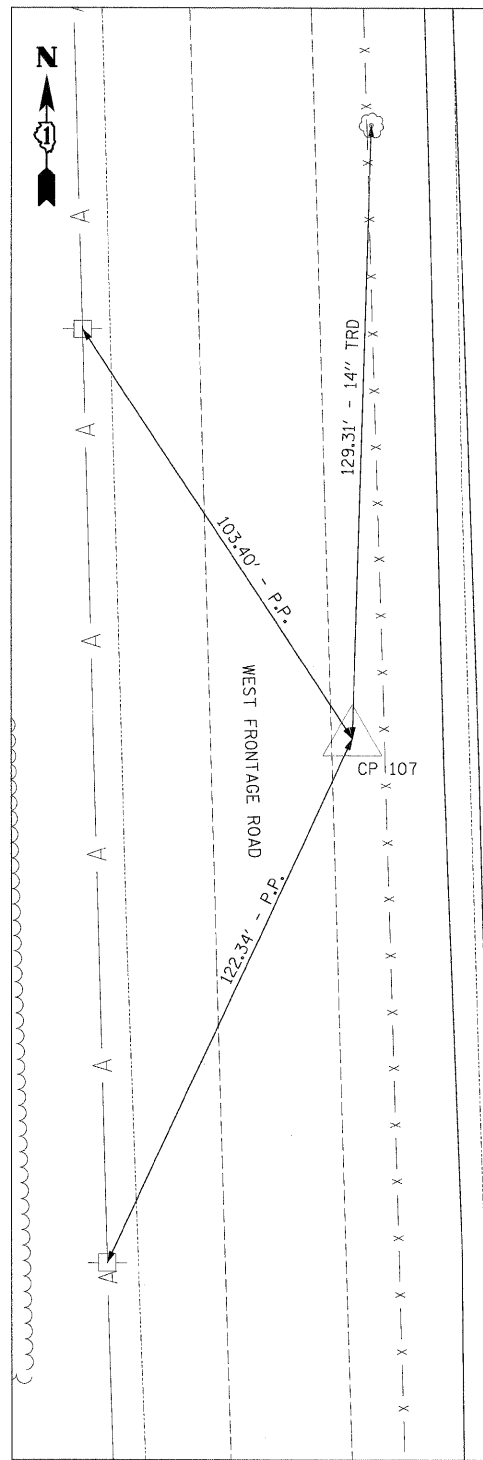


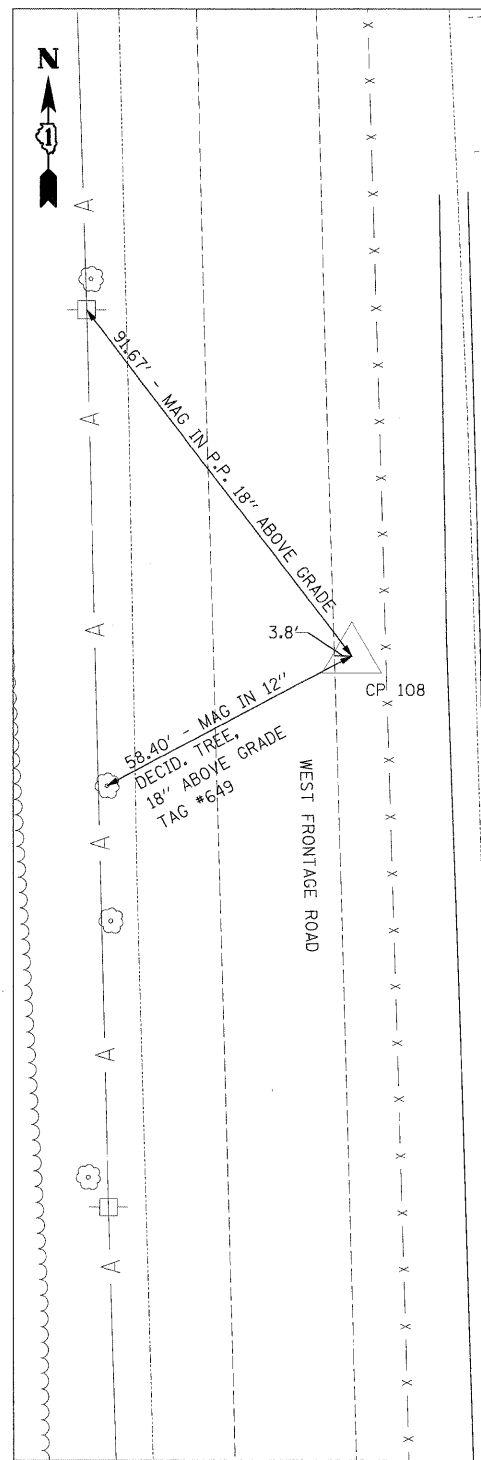
CP 206

N 1723116.51
 E 1022851.09
 STA 1041+01.94
 OFF 128.62' RT
 ELEV 533.91



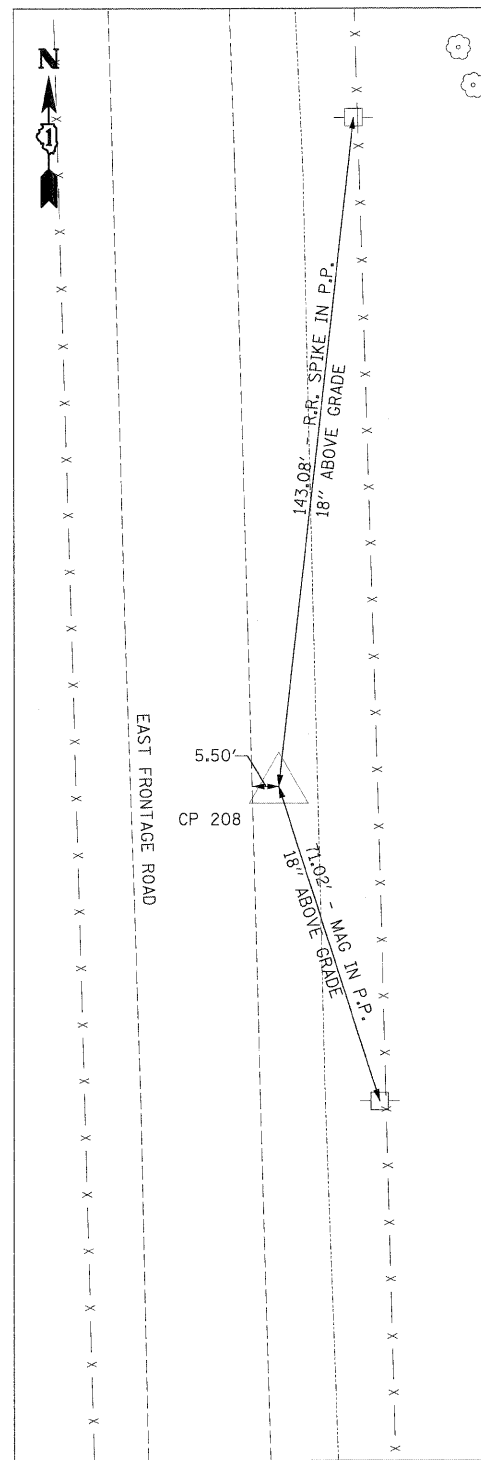
CP 107

N 1723719.78
 E 1022834.12
 STA 1046+97.48
 OFF 92.77' LT
 ELEV 535.50



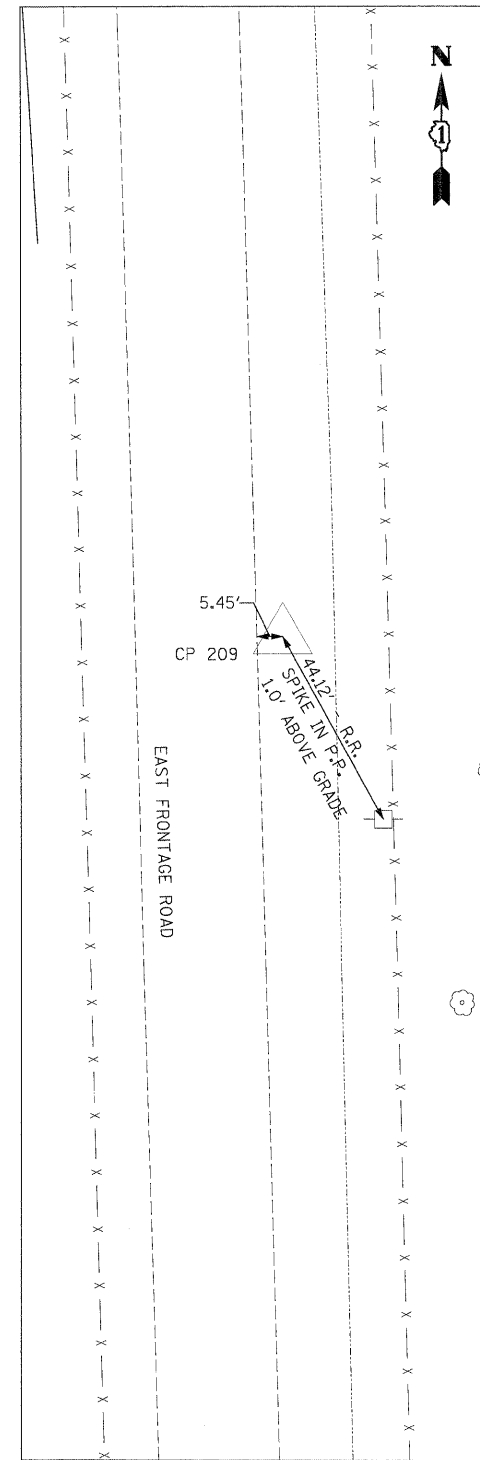
CP 108

N 1724305.65
 E 1022596.44
 STA 1052+97.62
 OFF 93.26' LT
 ELEV 535.56



CP 208

N 1724310.94
 E 1022818.13
 STA 1052+96.83
 OFF 128.49' RT
 ELEV 535.22



CP 209

N 1724913.70
 E 1022801.02
 STA 1058+99.82
 OFF 127.95' RT
 ELEV 535.74

FILE NAME =
 D160C31-SHT-ATB06.dgn

USER NAME = TKluegel
 PLOT SCALE = 1:20
 PLOT DATE = 12/11/2009

DESIGNED - TRK
 DRAWN - TRK
 CHECKED - DLT
 DATE - 12/18/09

REVISED -
 REVISED -
 REVISED -
 REVISED -

**STATE OF ILLINOIS
 DEPARTMENT OF TRANSPORTATION**

ALIGNMENTS, TIES, AND BENCHMARKS

SCALE: 1"=20' SHEET NO. 6 OF 9 SHEETS STA. TO STA.

F.A.I. RTE.	SECTION	COUNTY	TOTAL SHEETS	SHEET NO.
55	(99-1&2)AC-3	WILL	524	34
FED. ROAD DIST. NO. 1 ILLINOIS FED. AID PROJECT			CONTRACT NO. 60C31	

FINAL