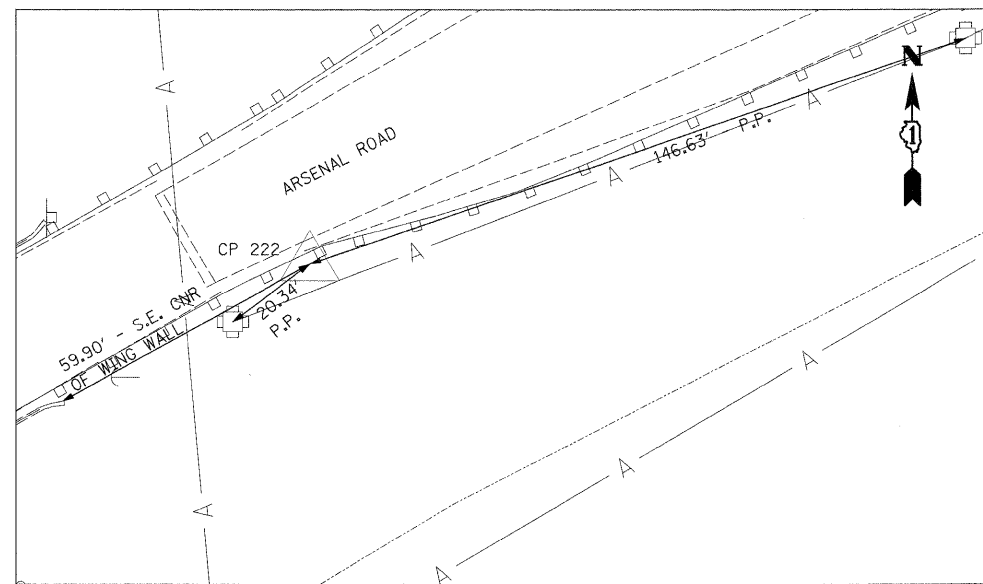
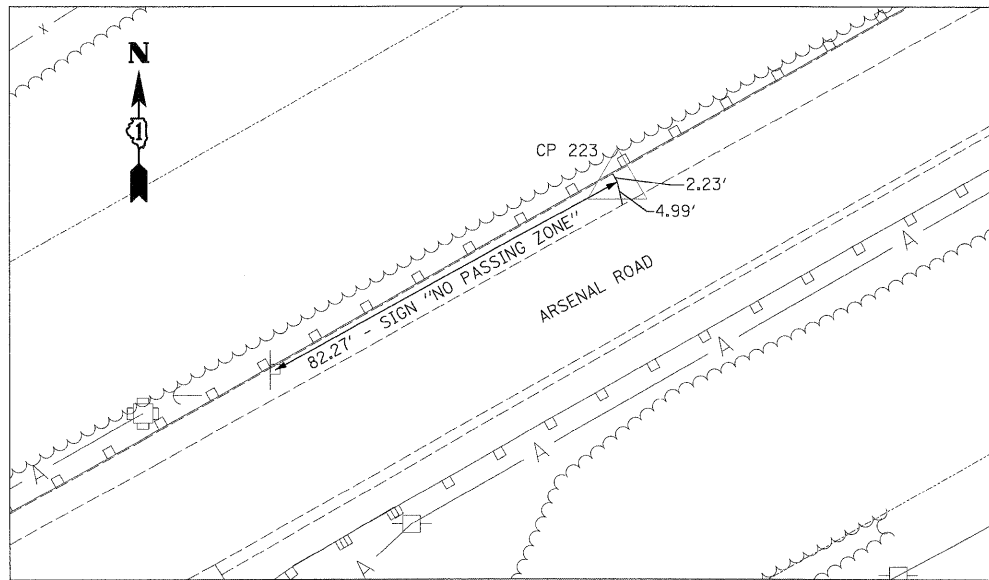


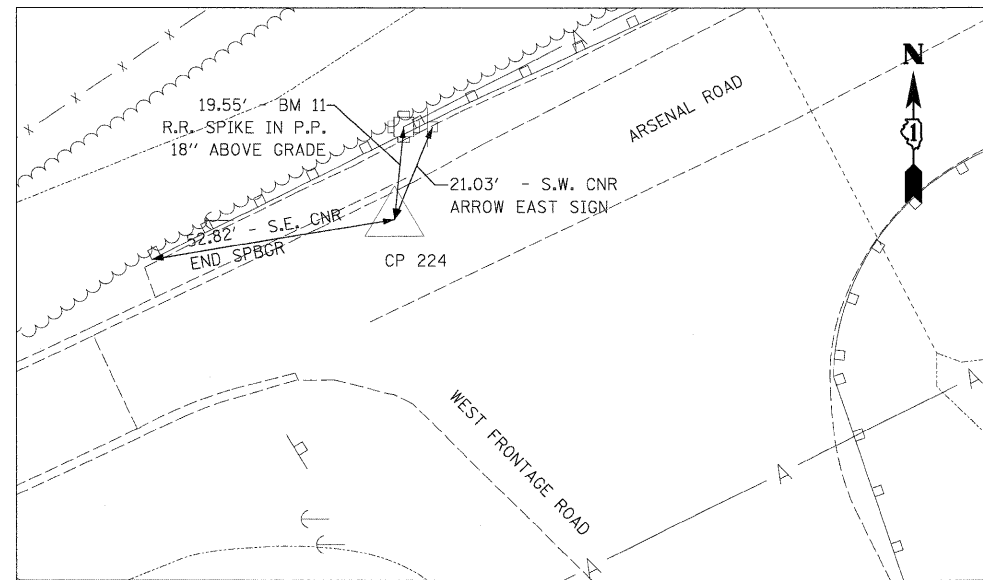
CP 221
 N 1731085.79
 E 1022939.09
 STA 1120+59.55
 OFF 596.23' RT
 ELEV 555.27



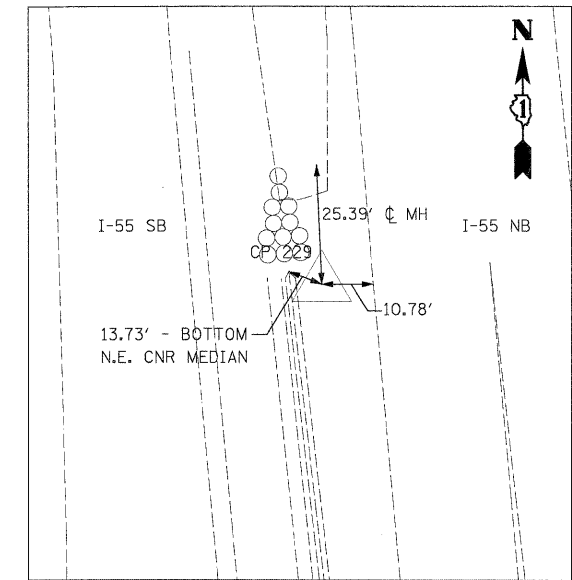
CP 222
 N 1730819.15
 E 1022538.84
 STA 1118+08.78
 OFF 181.43' RT
 ELEV 563.33



CP 223
 N 1730560.56
 E 1022013.06
 STA 1115+91.59
 OFF 362.19' LT
 ELEV 561.29



CP 224
 N 1730315.32
 E 1021579.16
 STA 1113+95.19
 OFF 816.44' LT
 ELEV 548.19



CP 229
 N 1730548.23
 E 1022385.77
 STA 1115+48.45
 OFF 8.15' RT
 ELEV 544.72

FILE NAME = D:\62031-SHT-ATB09.dgn	USER NAME = TKLuegel	DESIGNED - TRK	REVISED -
		DRAWN - TRK	REVISED -
		CHECKED - DLT	REVISED -
		DATE - 12/18/09	REVISED -

**STATE OF ILLINOIS
 DEPARTMENT OF TRANSPORTATION**

ALIGNMENTS, TIES, AND BENCHMARKS

SCALE: 1"=20' SHEET NO. 9 OF 9 SHEETS STA. TO STA.

F.A.I. RTE.	SECTION	COUNTY	TOTAL SHEETS	SHEET NO.
55	(99-1&2)AC-3	WILL	524	37
FED. ROAD DIST. NO. 1 ILLINOIS FED. AID PROJECT			CONTRACT NO. 60C31	