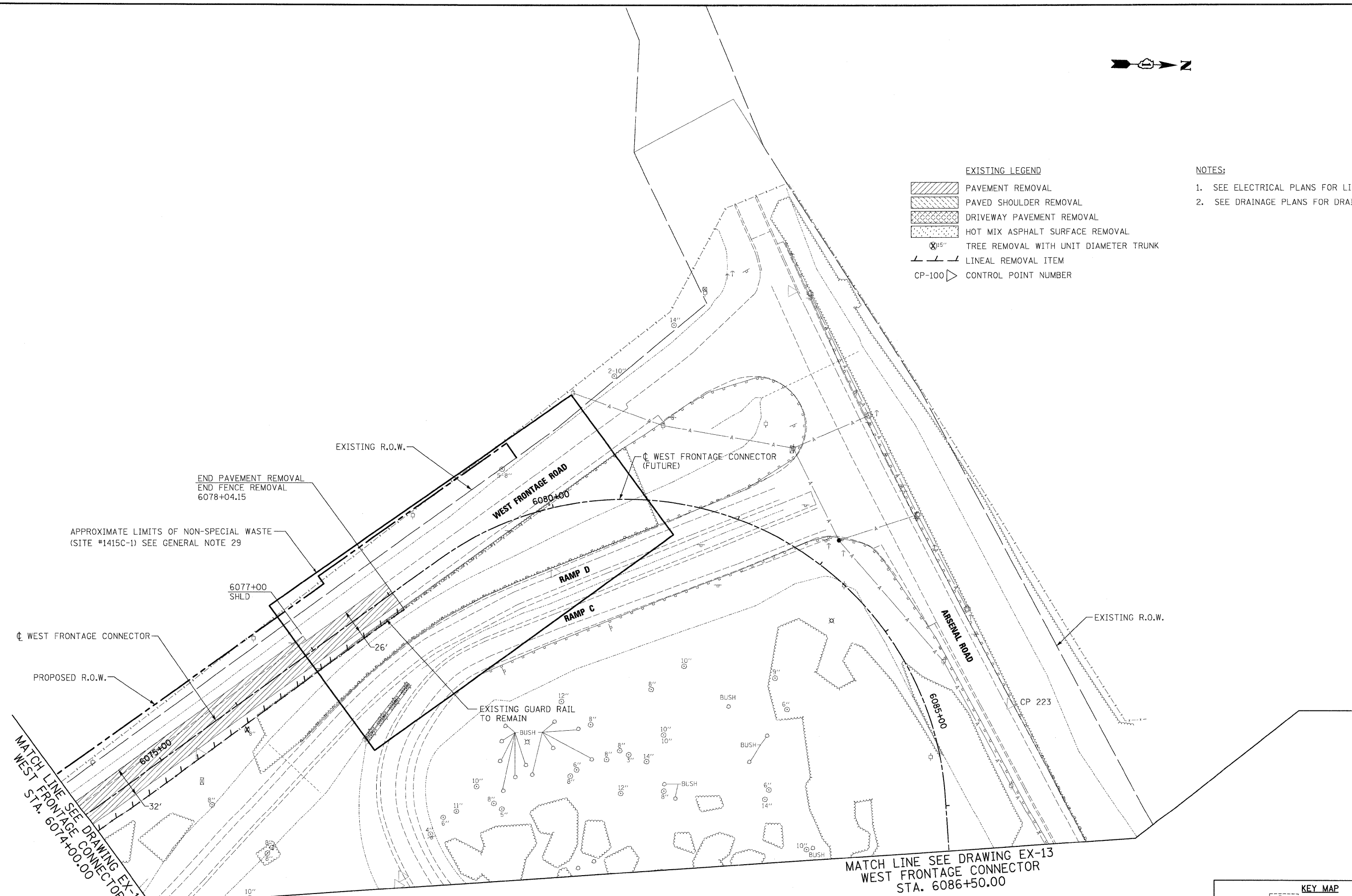




- EXISTING LEGEND**
- PAVEMENT REMOVAL
 - PAVED SHOULDER REMOVAL
 - DRIVEWAY PAVEMENT REMOVAL
 - HOT MIX ASPHALT SURFACE REMOVAL
 - TREE REMOVAL WITH UNIT DIAMETER TRUNK
 - LINEAL REMOVAL ITEM
 - CP-100 CONTROL POINT NUMBER

- NOTES:**
1. SEE ELECTRICAL PLANS FOR LIGHTING REMOVALS.
 2. SEE DRAINAGE PLANS FOR DRAINAGE REMOVALS.



END PAVEMENT REMOVAL
END FENCE REMOVAL
6078+04.15

APPROXIMATE LIMITS OF NON-SPECIAL WASTE
(SITE #1415C-1) SEE GENERAL NOTE 29

6077+00
SHLD

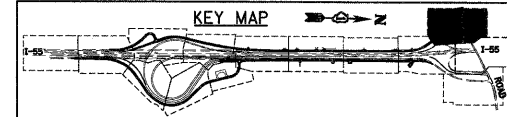
WEST FRONTAGE CONNECTOR

PROPOSED R.O.W.

MATCH LINE SEE DRAWING EX-11
WEST FRONTAGE CONNECTOR
STA. 6074+00.00

EXISTING GUARD RAIL
TO REMAIN

MATCH LINE SEE DRAWING EX-13
WEST FRONTAGE CONNECTOR
STA. 6086+50.00



McDonough Associates Inc.
 Engineers / Architects
 130 East Randolph Street, Chicago, Illinois 60601

FILE NAME = D1680C31-SHT-REMI2.dgn	USER NAME = TK1uegl	DESIGNED - JTF	REVISED -
		DRAWN - JTF	REVISED -
		CHECKED - DLT	REVISED -
		DATE - 12/18/09	REVISED -

**STATE OF ILLINOIS
DEPARTMENT OF TRANSPORTATION**

EXISTING PLAN AND REMOVALS

SCALE: 1"=50' SHEET NO. 12 OF 15 SHEETS STA. TO STA.

F.A.I. RTE.	SECTION	COUNTY	TOTAL SHEETS	SHEET NO.
55	(99-1&2)AC-3	WILL	524	49
CONTRACT NO. 60C31				

FED. ROAD DIST. NO. 1 ILLINOIS FED. AID PROJECT

FINAL