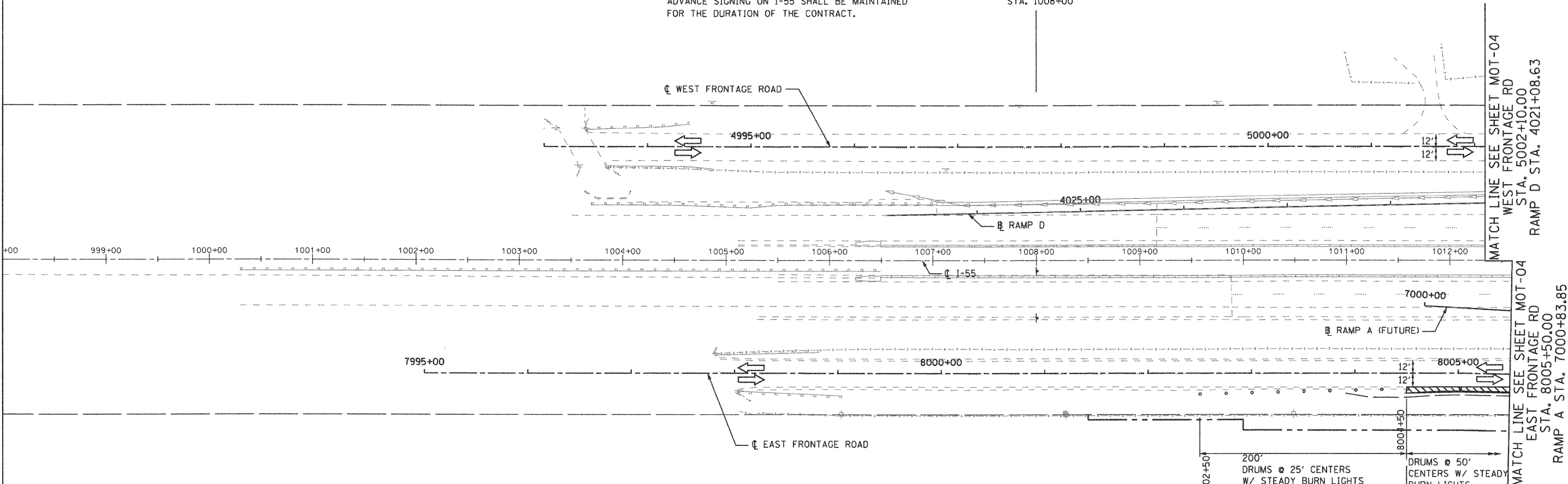


**NOTES**  
 ADVANCE SIGNING ON I-55 SHALL BE MAINTAINED  
 FOR THE DURATION OF THE CONTRACT.



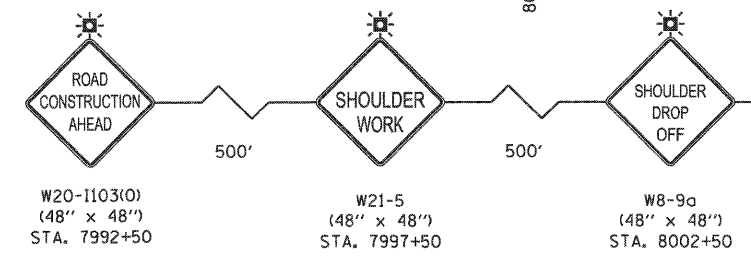
MATCH LINE SEE SHEET MOT-04  
 WEST FRONTAGE RD  
 STA. 5002+10.00  
 RAMP D STA. 4021+08.63

MATCH LINE SEE SHEET MOT-04  
 EAST FRONTAGE RD  
 STA. 8005+50.00  
 RAMP A STA. 7000+83.85

**MAINTENANCE OF TRAFFIC LEGEND**

- WORK ZONE (CURRENT STAGE)
- WORK ZONE (CONTD. FROM PREVIOUS STAGE)
- DIRECTION OF TRAFFIC
- TYPE II BARRICADES (DRUMS), SPACING AS SHOWN
- TEMPORARY PAVEMENT (INSTALLED IN CURRENT STAGE)
- TEMPORARY PAVEMENT (INSTALLED IN PREVIOUS STAGE)
- PAVEMENT CONSTRUCTION WITHOUT SURFACE COURSE

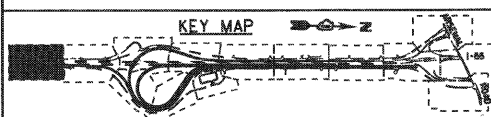
- NOTES**
1. PLASTIC DRUMS WITH HIGH PERFORMANCE REFLECTIVE SHEETING AND STEADY BURNING LIGHTS ARE REQUIRED FOR ALL NIGHT TIME CLOSURES.
  2. ALL SIGNS SHALL BE POST MOUNTED IF THE CLOSURE TIME EXCEEDS FOUR DAYS.
  3. FLASHING LIGHTS SHALL BE USED DURING THE HOURS OF DARKNESS AND SHALL BE INSTALLED ABOVE THE FIRST TWO SETS OF SIGNS.



200' DRUMS @ 25' CENTERS W/ STEADY BURN LIGHTS

8002+50

DRUMS @ 50' CENTERS W/ STEADY BURN LIGHTS



FILE NAME = ...ND160C31-SHT-STAGING101.dgn	USER NAME = grai	DESIGNED - GR	REVISED -	<b>STATE OF ILLINOIS DEPARTMENT OF TRANSPORTATION</b>	<b>MAINTENANCE OF TRAFFIC STAGE 1</b>			F.A.I. RTE. 55	SECTION (99-&2)-3	COUNTY WILL	TOTAL SHEETS 524	SHEET NO. 89
	PLOT SCALE = 1/50	DRAWN - GR	REVISED -		SCALE: 1"=50'	SHEET NO. 1 OF 12 SHEETS	STA.	TO STA.	CONTRACT NO. 60C31			
	PLOT DATE = 12/16/2009	CHECKED - RY	REVISED -		FED. ROAD DIST. NO. 1   ILLINOIS FED. AID PROJECT							
		DATE - 12/18/2009	REVISED -		<b>FINAL</b>							