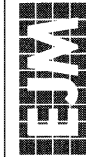


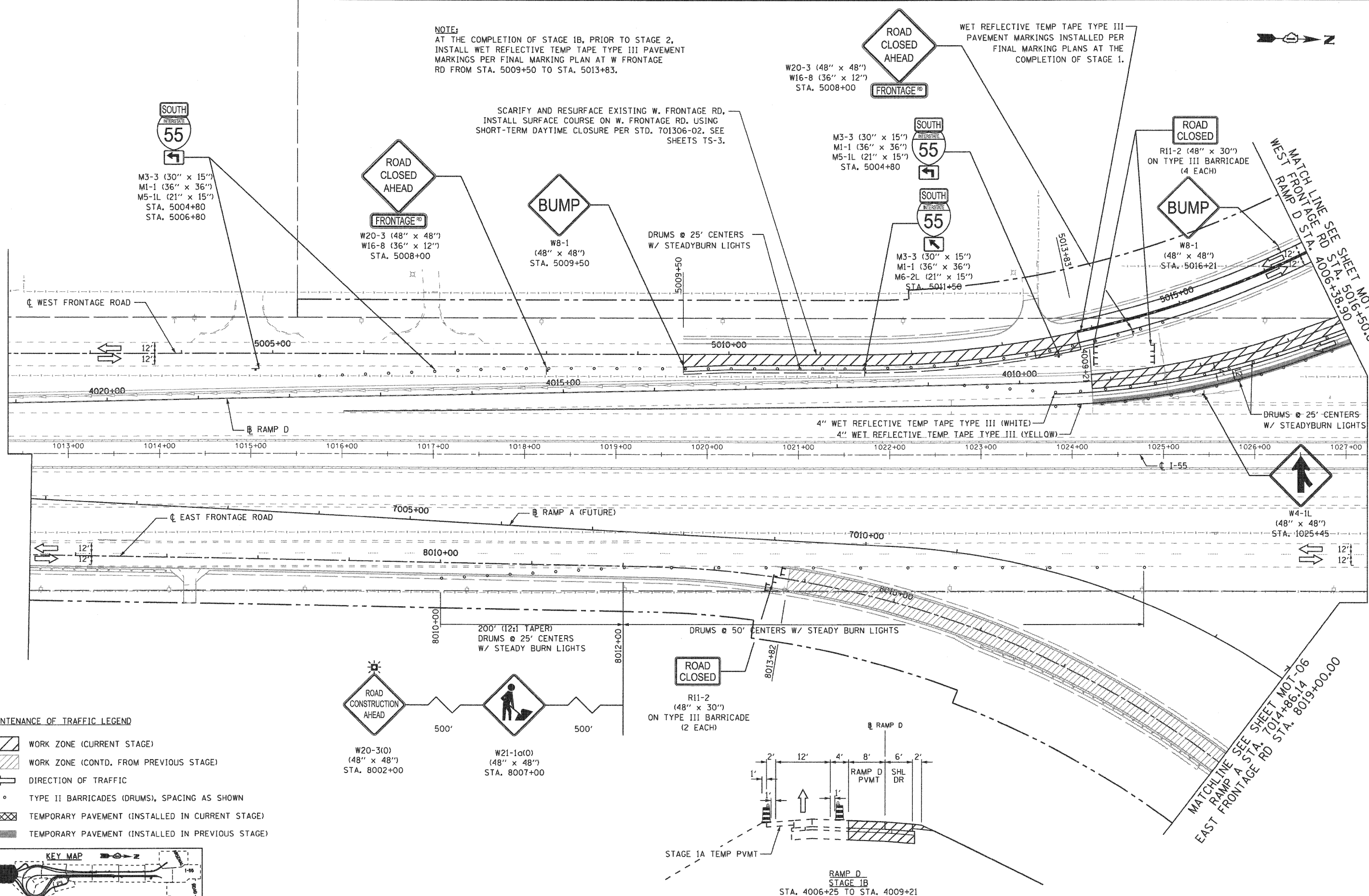
**EJM ENGINEERING, INC.**  
411 South Wells Street Suite 800  
Chicago, Illinois 60607



**NOTE:**  
AT THE COMPLETION OF STAGE 1B, PRIOR TO STAGE 2,  
INSTALL WET REFLECTIVE TEMP TAPE TYPE III PAVEMENT  
MARKINGS PER FINAL MARKING PLAN AT W FRONTAGE  
RD FROM STA. 5009+50 TO STA. 5013+83.

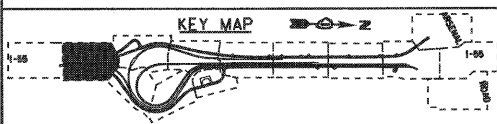
SCARIFY AND RESURFACE EXISTING W. FRONTAGE RD,  
INSTALL SURFACE COURSE ON W. FRONTAGE RD. USING  
SHORT-TERM DAYTIME CLOSURE PER STD. 701306-02. SEE  
SHEETS TS-3.

WET REFLECTIVE TEMP TAPE TYPE III  
PAVEMENT MARKINGS INSTALLED PER  
FINAL MARKING PLANS AT THE  
COMPLETION OF STAGE 1.



**MAINTENANCE OF TRAFFIC LEGEND**

- WORK ZONE (CURRENT STAGE)
- WORK ZONE (CONTD. FROM PREVIOUS STAGE)
- DIRECTION OF TRAFFIC
- TYPE II BARRICADES (DRUMS), SPACING AS SHOWN
- TEMPORARY PAVEMENT (INSTALLED IN CURRENT STAGE)
- TEMPORARY PAVEMENT (INSTALLED IN PREVIOUS STAGE)



FILE NAME = ...\\D160C31-SHT-STAGING1802.dgn

USER NAME = gres  
PLOT SCALE = 1/8"=1'-0"  
PLOT DATE = 12/16/2009

DESIGNED - GR  
DRAWN - GR  
CHECKED - RY  
DATE - 12/18/2009

REVISED -  
REVISED -  
REVISED -  
REVISED -

**STATE OF ILLINOIS  
DEPARTMENT OF TRANSPORTATION**

**MAINTENANCE OF TRAFFIC  
STAGE 1B**

SCALE: 1"=50' SHEET NO. 1 OF 2 SHEETS STA. TO STA.

F.A.I. RTE.	SECTION	COUNTY	TOTAL SHEETS	SHEET NO.
55	(99-1&2)-3	WILL	524	103
CONTRACT NO. 60C31				
FED. ROAD DIST. NO. 1 ILLINOIS FED. AID PROJECT				

**FINAL**