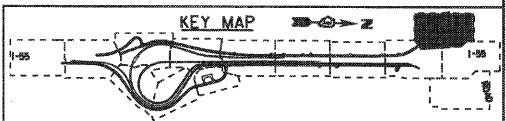
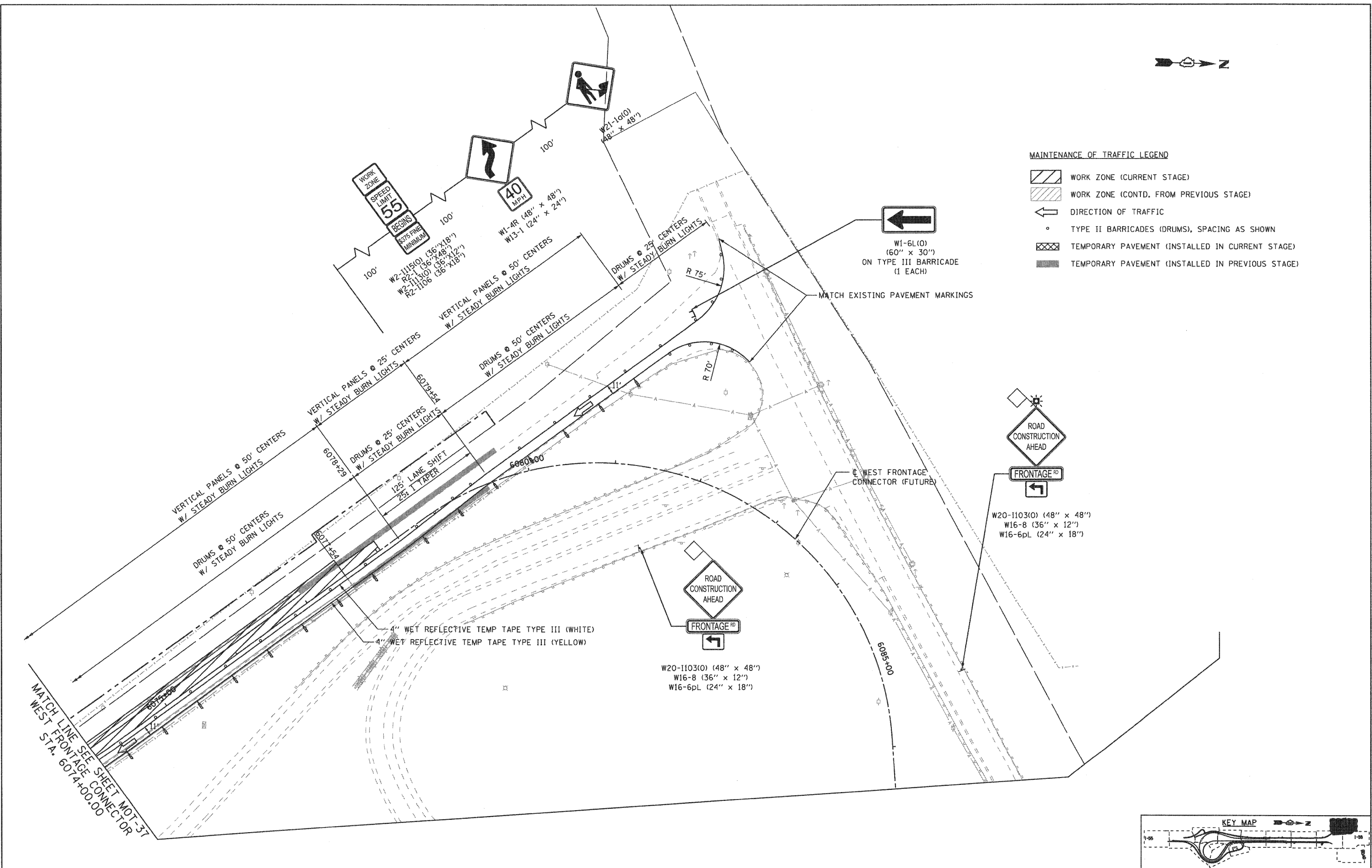


EJM ENGINEERING, INC.  
 411 South Wells Street Suite 800  
 Chicago, Illinois 60607



**MAINTENANCE OF TRAFFIC LEGEND**

- WORK ZONE (CURRENT STAGE)
- WORK ZONE (CONTD. FROM PREVIOUS STAGE)
- DIRECTION OF TRAFFIC
- TYPE II BARRICADES (DRUMS), SPACING AS SHOWN
- TEMPORARY PAVEMENT (INSTALLED IN CURRENT STAGE)
- TEMPORARY PAVEMENT (INSTALLED IN PREVIOUS STAGE)



FILE NAME = ...ND160C31-SHT-STAGING312.dgn

USER NAME = gra1  
 PLOT SCALE = 1/8"=1'-0"  
 PLOT DATE = 12/16/2009

DESIGNED - GR  
 DRAWN - GR  
 CHECKED - RY  
 DATE - 12/18/2009

REVISED -  
 REVISED -  
 REVISED -  
 REVISED -

**STATE OF ILLINOIS  
 DEPARTMENT OF TRANSPORTATION**

**MAINTENANCE OF TRAFFIC  
 STAGE 3**

SCALE: 1"=50' SHEET NO. 10 OF 10 SHEETS STA. TO STA.

F.A.I. RTE.	SECTION	COUNTY	TOTAL SHEETS	SHEET NO.
55	(99-1&2)-3	WILL	524	124
FED. ROAD DIST. NO. 1 (ILLINOIS) FED. AID PROJECT			CONTRACT NO. 60C31	

FINAL