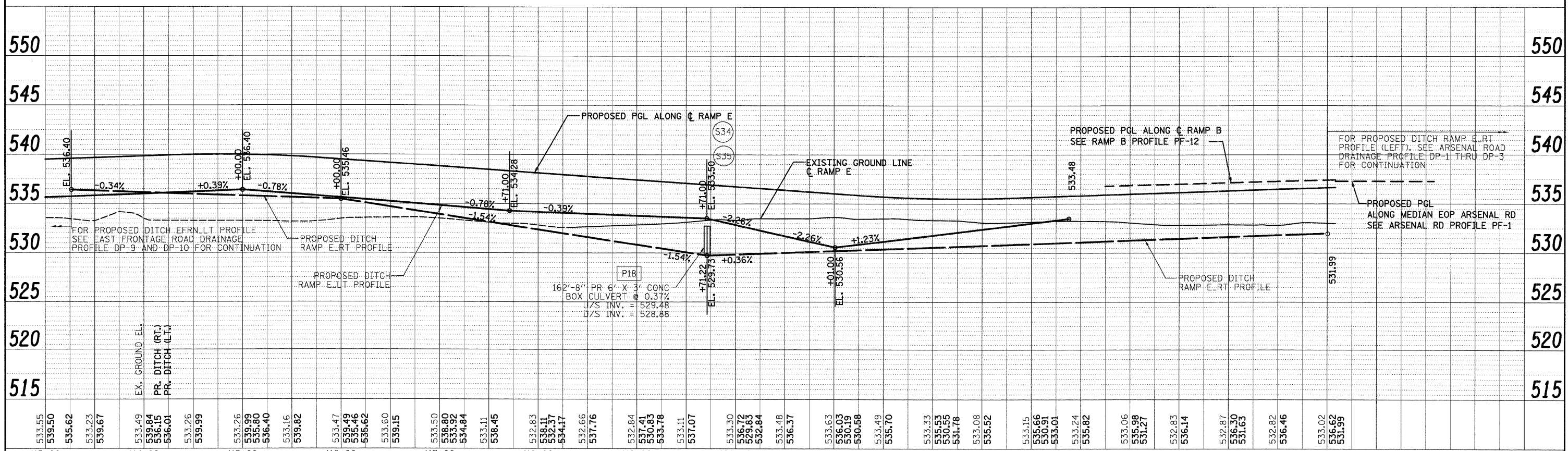
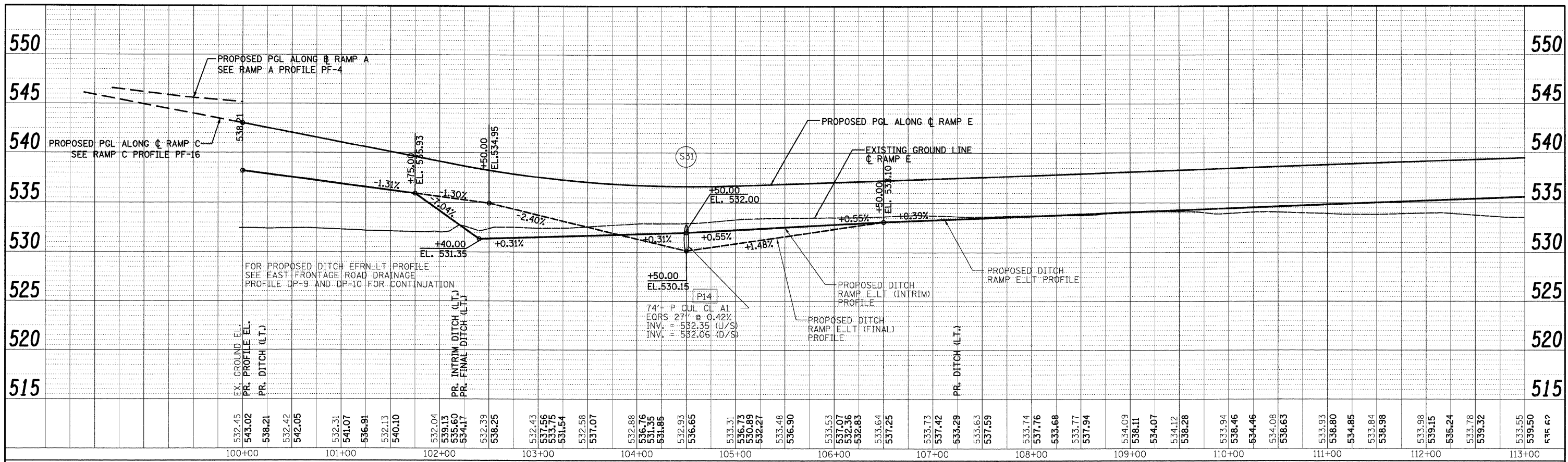


PLAN	REVISIONS	BY	DATE
NO.	NO.		
NO.	NO.		
NO.	NO.		
NO.	NO.		

PROFILE	REVISIONS	BY	DATE
NO.	NO.		
NO.	NO.		
NO.	NO.		
NO.	NO.		

300 W. ADAMS ST.  
CHICAGO, IL 60606  
TEL: (312) 629-0240  
SINGH & ASSOCIATES, INC.  
CONSULTING ENGINEERS  
FAX: (312) 629-8449



FILE NAME = D:\B0C31-SHT-DRAINPROFILE18.dgn	USER NAME = TKluemel	DESIGNED - PTK/VP	REVISED -	STATE OF ILLINOIS DEPARTMENT OF TRANSPORTATION RAMP E DRAINAGE PROFILE SCALE: 1"=50'H/1"=5'V SHEET NO. 18 OF 18 SHEETS STA. TO STA.	F.A.I. RTE. 55	SECTION (99-1&2)AC-3	COUNTY WILL	TOTAL SHEETS 524	SHEET NO. 183
PLOT SCALE = 1:58	DATE = 12/18/09	DRAWN - PTK/VP	REVISED -		CONTRACT NO. 60C31			ILLINOIS FED. AID PROJECT	
PLOT DATE = 12/11/2009		CHECKED - CL	REVISED -						
		DATE = 12/18/09	REVISED -						

FINAL