

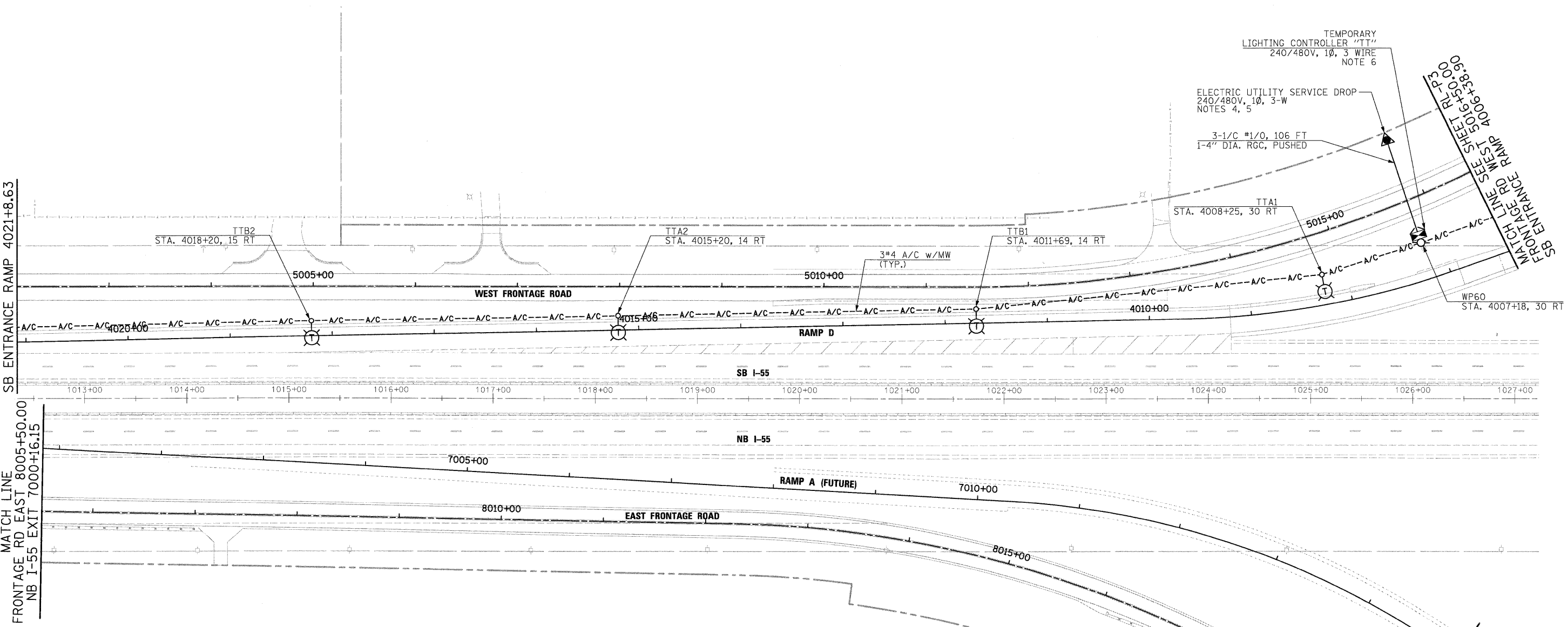


MATCH LINE SEE SHEET RL-P1  
FRONTAGE RD WEST 5002+10.00  
SB ENTRANCE RAMP 4021+8.63

MATCH LINE  
FRONTAGE RD EAST 8005+50.00  
NB I-55 EXIT 7000+16.15

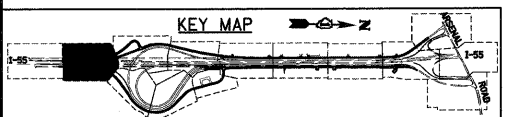
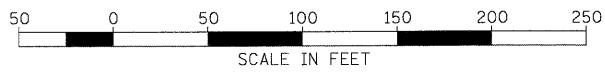
MATCH LINE SEE SHEET RL-P2  
FRONTAGE RD WEST 5016+50.00  
SB ENTRANCE RAMP 4006+38.00

MATCH LINE  
FRONTAGE RD EAST 8019+17.00  
NB I-55 EXIT 7015+00.00



**NOTES:**

1. TEMPORARY LIGHTING UNITS, TEMPORARY LIGHTING CONTROLLER AND ASSOCIATED SERVICE SHALL BE FURNISHED, INSTALLED, AND ENERGIZED PRIOR TO OPENING RAMP D FOR TRAFFIC.
2. TEMPORARY LIGHTING WILL REMAIN IN SERVICE UNTIL PROPOSED (PERMANENT) LIGHTING IS INSTALLED UNDER A SEPARATE CONTRACT.
3. TEMPORARY WOOD POLE, 100FT., CLASS 1, 15 FT. MAST ARM WITH LUMINAIRE, SODIUM VAPOR, HIGH MAST, HORIZONTAL MOUNT, 750 WATT, 80 FT. MOUNTING HEIGHT. FOR TEMPORARY LIGHTING DETAILS, SEE DRAWING RL-D1.
4. FOR ELECTRIC SERVICE INSTALLATION DETAIL, SEE DRAWING RL-D4.
5. EXACT LOCATION OF SERVICE POLE AND THE UTILITY SERVICE DROP SHALL BE COORDINATED WITH COMED AND SHALL BE DETERMINED IN THE FIELD WITH THE ENGINEER.
6. FOR TEMPORARY LIGHTING CONTROLLER INSTALLATION DETAILS, SEE DRAWING RL-D1.



**McDonough Associates Inc.**  
 Engineers / Architects  
 130 East Randolph Street, Chicago, Illinois 60601

FILE NAME =	USER NAME = TK[uael]
D:\6031-SHT-PLAN\82.dgn	

DESIGNED - JLW	REVISD -
DRAWN - CJM	REVISD -
CHECKED - KMY	REVISD -
DATE - 12/18/09	REVISD -

PLOT SCALE = 1:50
PLOT DATE = 12/11/2009

**STATE OF ILLINOIS  
DEPARTMENT OF TRANSPORTATION**

**I-55 AT ARSENAL ROAD  
RAMP D TEMPORARY LIGHTING PLAN**

SCALE: 1" = 50'    SHEET NO. 2 OF 3 SHEETS    STA.    TO STA.

F.A.I. RTE.	SECTION	COUNTY	TOTAL SHEETS	SHEET NO.
55	(99-1&2)AC-3	WILL	524	293
FED. ROAD DIST. NO. 1 ILLINOIS FED. AID PROJECT			CONTRACT NO. 60C31	