

STATE OF ILLINOIS
DEPARTMENT OF TRANSPORTATION

DESIGN STRESSES
FIELD UNITS

$f'_c = 3,500$ psi
 $f_y = 60,000$ psi (Reinforcement)

PRECAST UNITS

$f'_c = 4,500$ psi (pre-cast units)

DESIGN SPECIFICATIONS
2002 AASHTO Standard Specifications

CURVE DATA

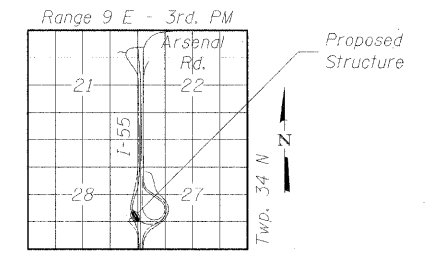
Ramp C
PI STA. = 2037+82.40
 $\Delta = 132^\circ 56' 23.34"$ (LT)
 $D = 6^\circ 51' 42"$
 $R = 835.00'$
 $T = 1917.61'$
 $L = 1937.40'$
 $E = 1256.52'$
S.E. RUN = 0.06 Ft./Ft.
P.C. STA. = 2018+64.79
P.T. STA. = 2038+02.19

Full SE from Sta. 2019+76.79 to end of wall.
For transition of SE from Sta. 2019+76.79 to beginning of wall see Sheet RW3-2.

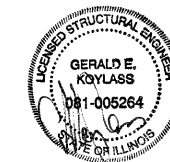
Parapet and Anchorage Slab are not part of this Contract

Note "A":
The top of levelling pad shall be established at minimum depth of 3.5 ft. below finished grade unless sound bed rock is encountered higher. When sound bed rock is encountered less than 1 foot below finished grade, the minimum embedment depth below the finished grade shall be 1 foot.

APPROVED
FOR STRUCTURAL ADEQUACY ONLY
Ralph E. Anderson (TIT)
ENGINEER OF BRIDGES AND STRUCTURES



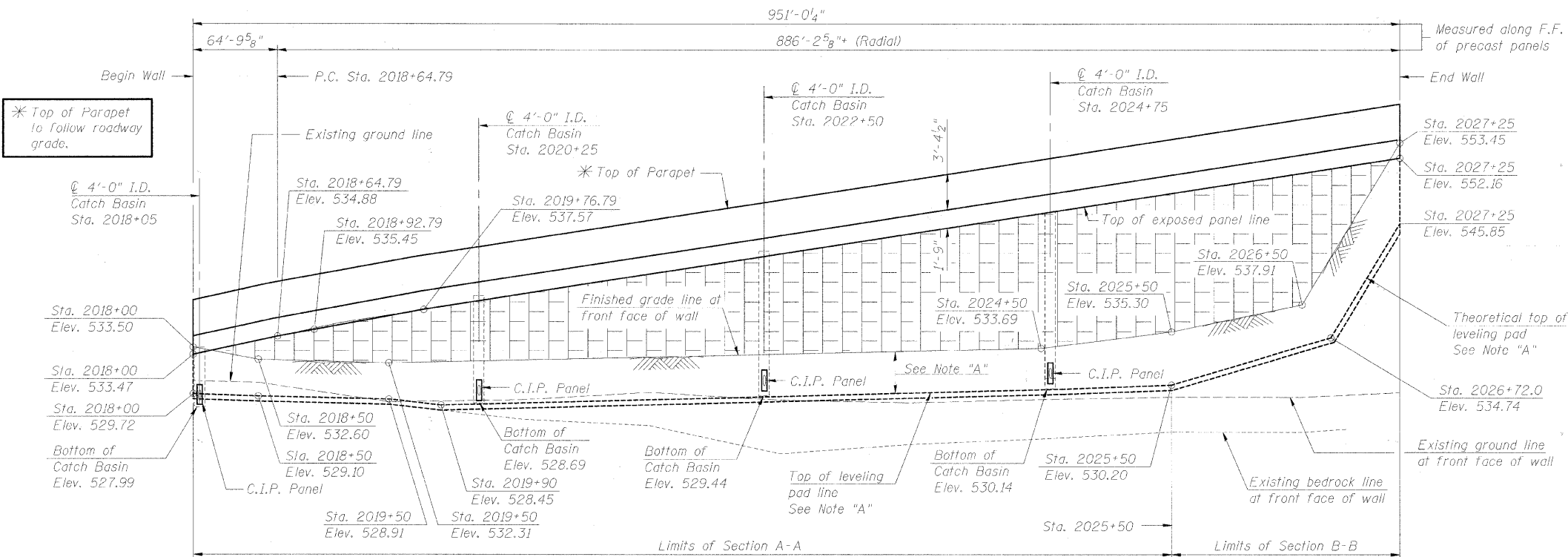
LOCATION SKETCH



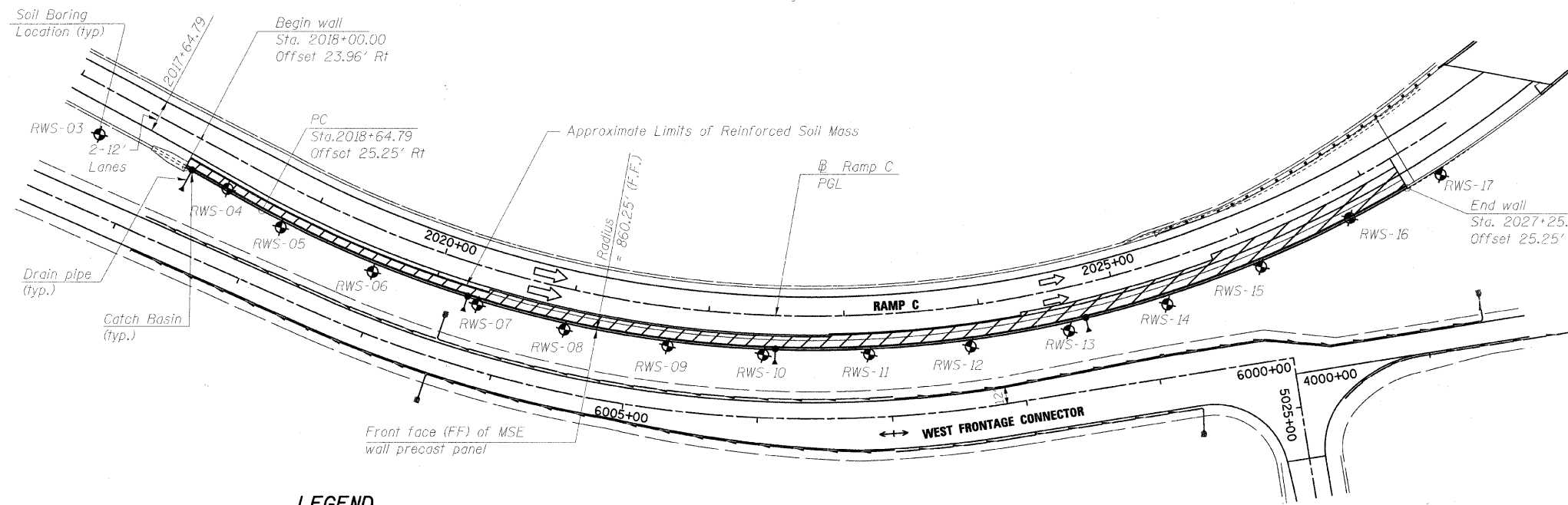
Exp: 11/30/2010

GENERAL PLAN & ELEVATION
MSE WALL-RAMP C
F.A.I. RTE. 55 - SEC. (99-1&2) R-6
WILL COUNTY
STATION 2018+00 TO 2027+25
STRUCTURE NO. 099-W028

Bench Mark:
(BMRR) Box cut at top of S.E. wingwall of Grant Creek Bridge on E. Frontage Rd. of I-55, Elev. 520.80
Existing Structure:
None.



ELEVATION
(Looking at F.F. of wall)



PLAN

Note:
Wall offsets are measured from the Ramp C to the front face of precast panels.

LEGEND

- Manhole
- Catch Basin
- ⊙ Soil Boring
- F.F. = Front Face
- B.F. = Back Face
- E.F. = Each Face
- I.I. = Inside Face
- O.F. = Outside Face

DESIGNED	PMH
CHECKED	MJI
DRAWN	RJ
CHECKED	BKB

McDonough Associates Inc.
Engineers / Architects
130 East Randolph Street
Chicago, Illinois 60601
(312) 946-8600

SHEET NO.	F.A.I. RTE.	SECTION	COUNTY	TOTAL SHEETS	SHEET NO.
RW3-1	55	(99-1&2) AC-3	WILL	524	311
CONTRACT NO. 60C31					
FED. ROAD DIST. NO. 1 ILLINOIS FED. AID PROJECT					