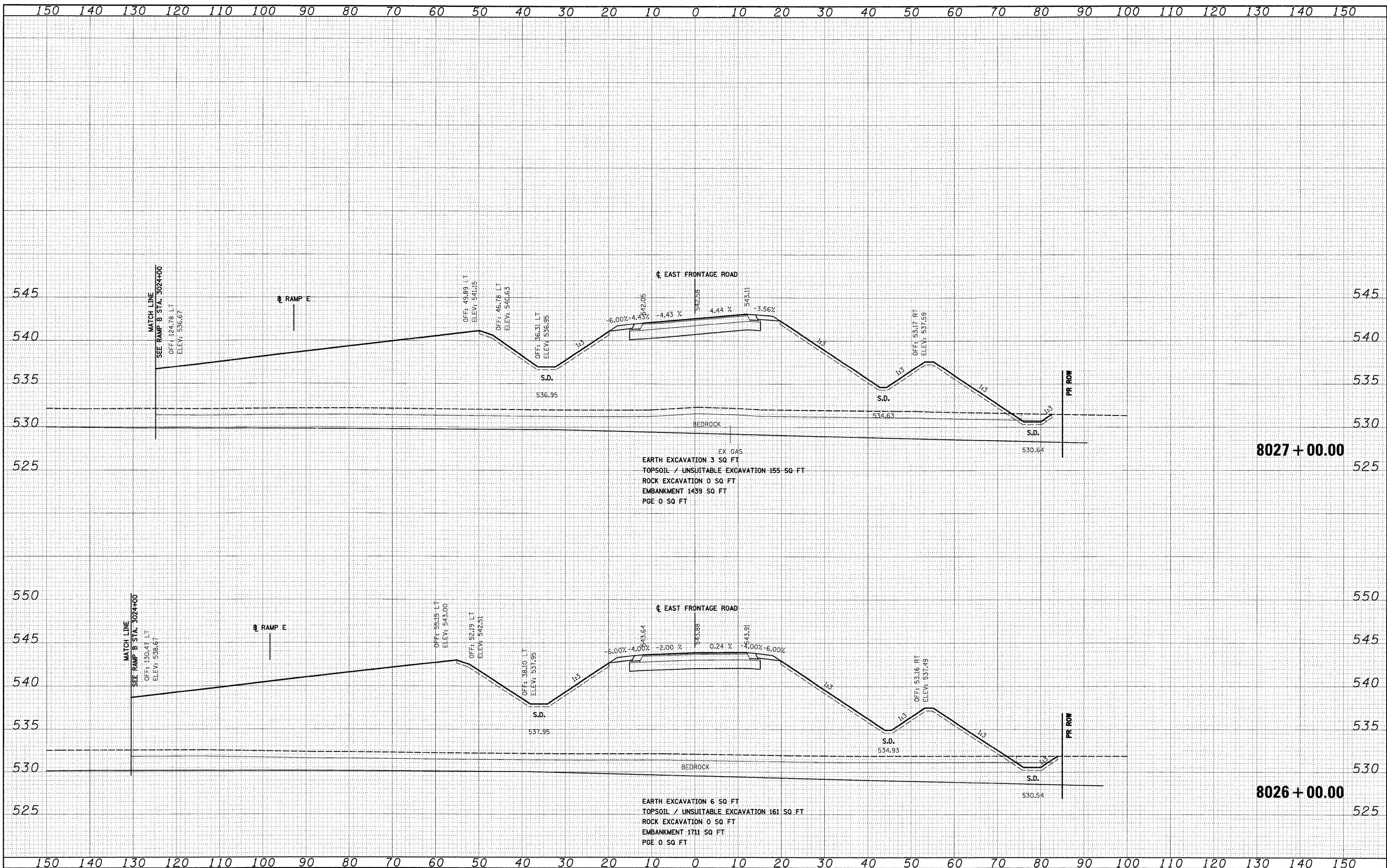


FINAL SURVEY	BY	DATE
SURVEYED		
PLOTTED		
NOTE BOOK		
AREAS		
CHECKED		
NO.		

ORIGINAL SURVEY	BY	DATE
SURVEYED		
PLOTTED		
NOTE BOOK		
AREAS		
CHECKED		
NO.		



FILE NAME = D:\60C31-SHT-XSSH704.dgn
USER NAME = TKluerg1

DESIGNED - TRK	REVISED -
DRAWN - TRK	REVISED -
CHECKED - DLT	REVISED -
DATE - 12/18/09	REVISED -

**STATE OF ILLINOIS
DEPARTMENT OF TRANSPORTATION**

EAST FRONTAGE ROAD
SCALE: 1"=10'H; 1"=5'V SHEET NO. 13 OF 30 SHEETS | STA. 8026+00.00 TO STA. 8027+00.00

F.A.I. RTE. 55	SECTION (99-1&2)AC-3	COUNTY WILL	TOTAL SHEETS 524	SHEET NO. 441
CONTRACT NO. 60C31			FED. ROAD DIST. NO. 1 ILLINOIS FED. AID PROJECT	

FINAL