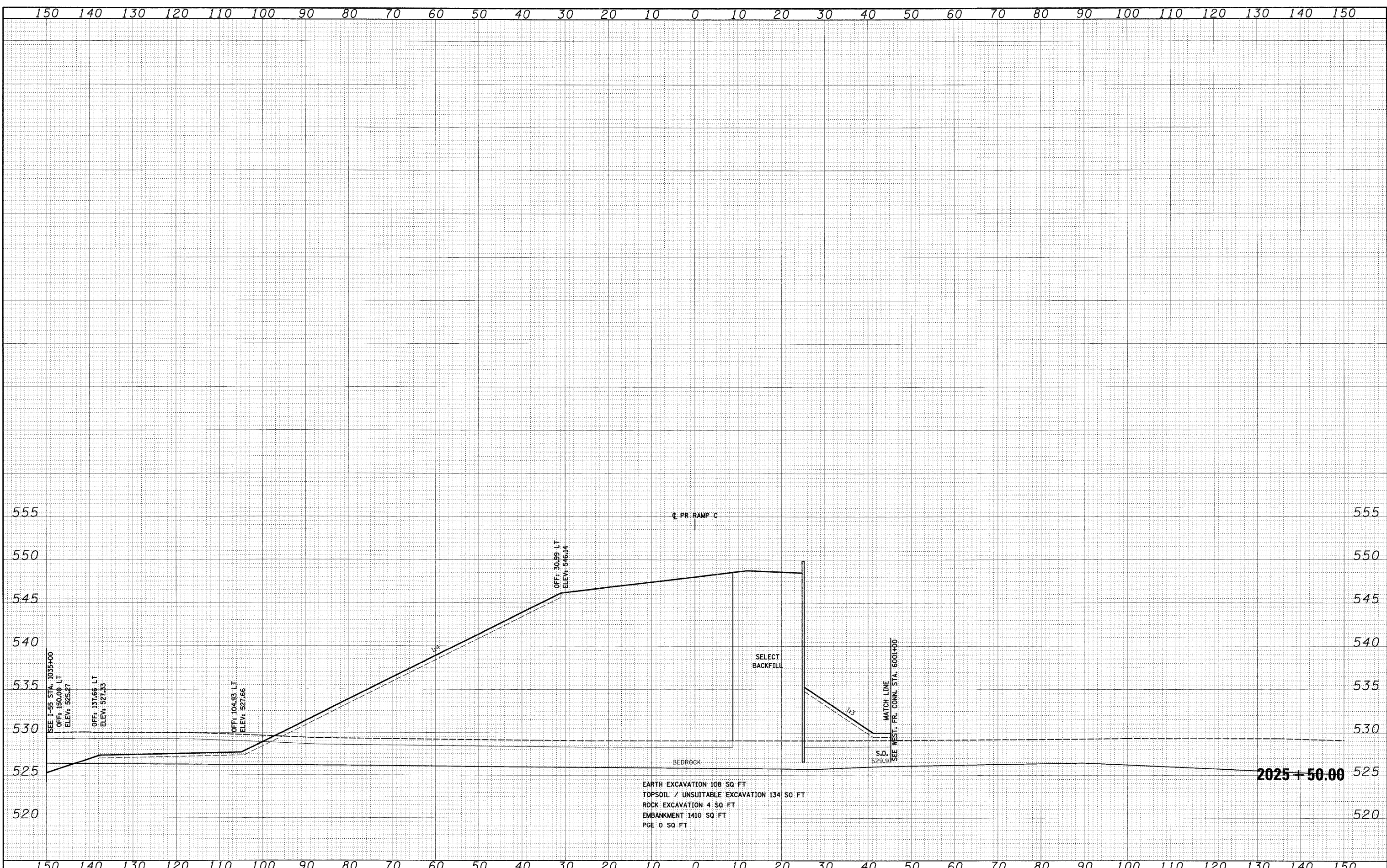


DATE	
BY	
FINAL SURVEY	
SURVEYED	
PLOTTED	
NOTE BOOK	
AREAS CHECKED	
NO.	

DATE	
BY	
ORIGINAL SURVEY	
SURVEYED	
PLOTTED	
NOTE BOOK	
AREAS CHECKED	
NO.	

McDonough Associates Inc.
 Engineers / Architects
 100 East Randolph Street Chicago, Illinois 60601



FILE NAME =
 D160C31-SHT-XSSH06.dgn

USER NAME	- TKlu@e1
DESIGNED	- TRK
DRAWN	- TRK
CHECKED	- DLT
DATE	- 12/18/09
REVISED	-
REVISED	-
REVISED	-
REVISED	-

**STATE OF ILLINOIS
 DEPARTMENT OF TRANSPORTATION**

RAMP C CROSS SECTIONS
 SCALE: 1"=10'H; 1"=5'V SHEET NO. 11 OF 21 SHEETS STA. 2025+50.00 TO STA. 2025+50.00

F.A.I. RTE.	SECTION	COUNTY	TOTAL SHEETS	SHEET NO.
55	(99-1&2)AC-3	WILL	524	505
CONTRACT NO. 60C31				
FED. ROAD DIST. NO. 1 ILLINOIS FED. AID PROJECT				

FINAL