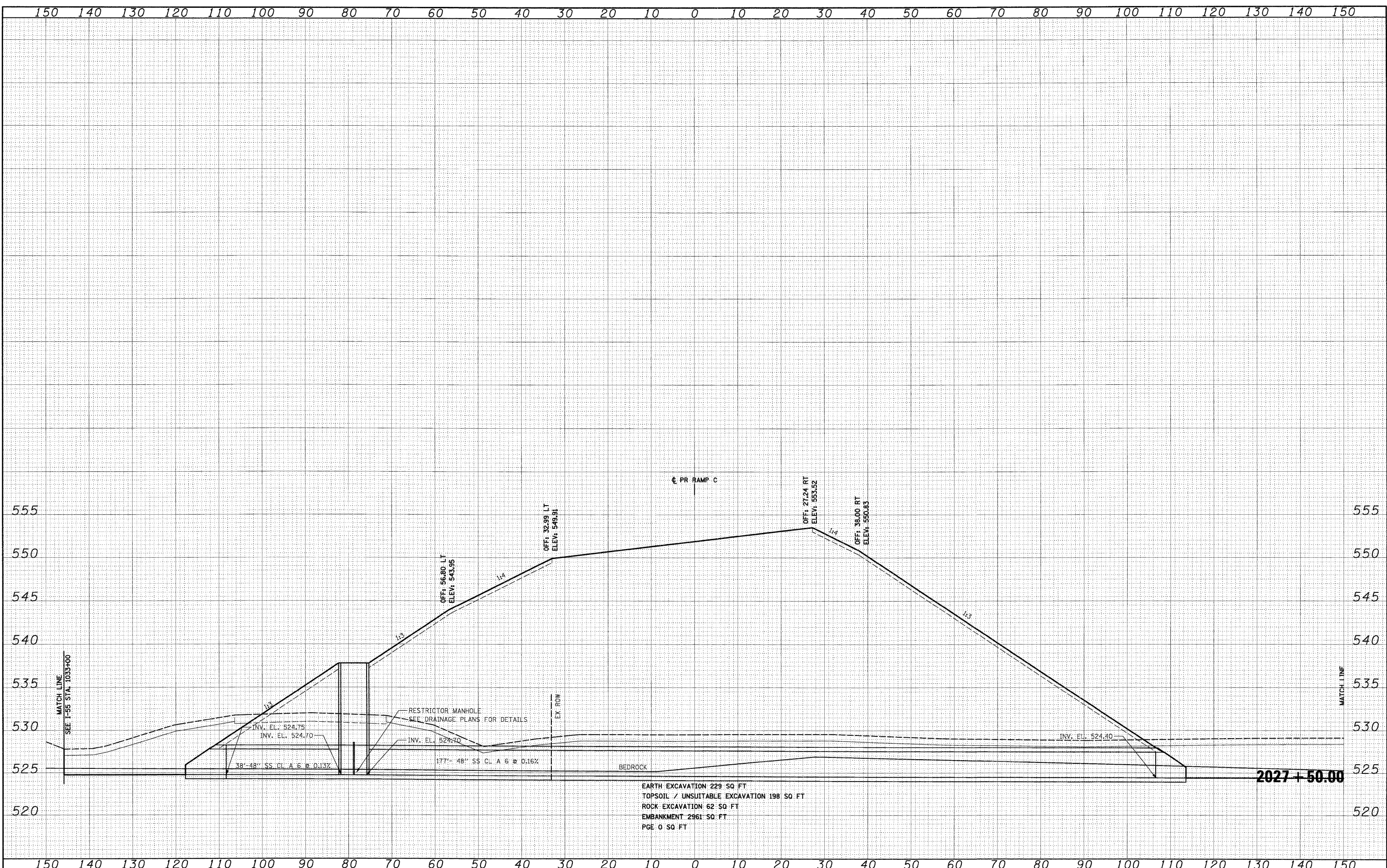


FINAL SURVEY	DATE
SURVEYED	BY
PLOTTED	
NOTE BOOK	
AREAS CHECKED	
NO.	

ORIGINAL SURVEY	DATE
SURVEYED	BY
PLOTTED	
NOTE BOOK	
AREAS CHECKED	
NO.	

**McDonough Associates Inc.**  
 Engineers / Architects  
 700 East Randolph Street, Chicago, Illinois 60601



EARTH EXCAVATION 229 SQ FT  
 TOPSOIL / UNSUITABLE EXCAVATION 198 SQ FT  
 ROCK EXCAVATION 62 SQ FT  
 EMBANKMENT 2961 SQ FT  
 PGE 0 SQ FT

**2027+50.00**

FILE NAME = D:\60C31-SHT-XSSH06.dgn

USER NAME = TKluergel  
 PLOT SCALE = 1:100  
 PLOT DATE = 12/14/2009

DESIGNED - TRK  
 DRAWN - TRK  
 CHECKED - DLT  
 DATE - 12/18/09

REVISED -  
 REVISED -  
 REVISED -  
 REVISED -

**STATE OF ILLINOIS  
 DEPARTMENT OF TRANSPORTATION**

**RAMP C CROSS SECTIONS**

SCALE: 1"=10'H; 1"=5'V SHEET NO. 14 OF 21 SHEETS STA. 2027+50.00 TO STA. 2027+50.00

F.A.1 RTE. 55	SECTION (99-1&2)AC-3	COUNTY WILL	TOTAL SHEETS 524	SHEET NO. 508
CONTRACT NO. 60C31				
FED. ROAD DIST. NO. 1 (ILLINOIS) FED. AID PROJECT				