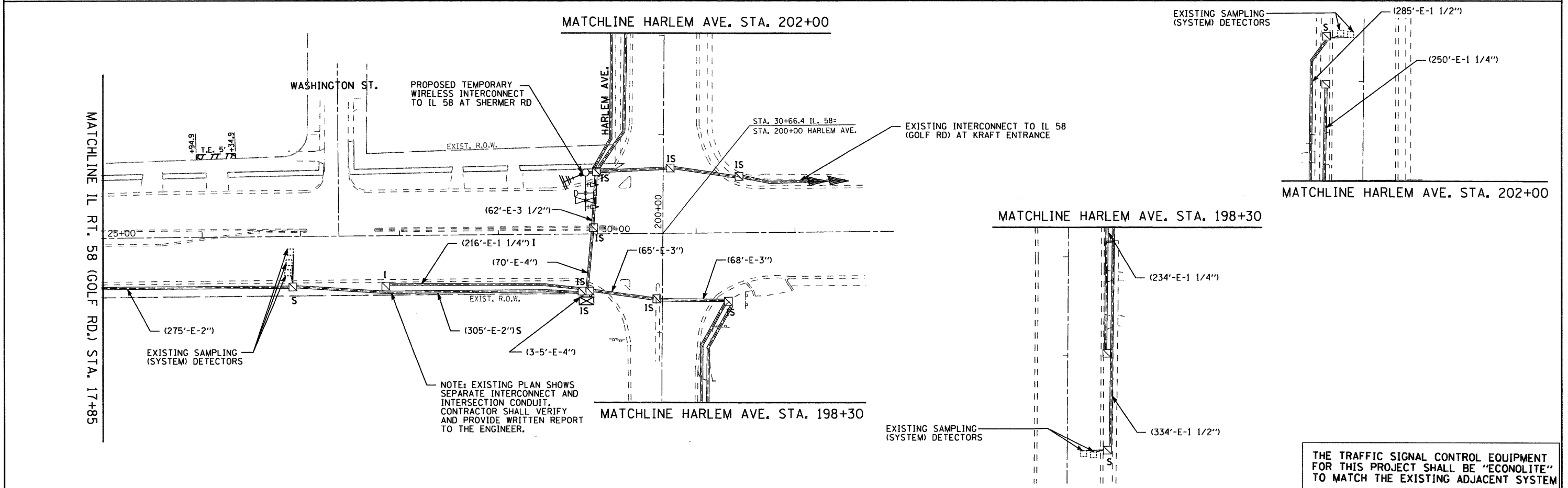
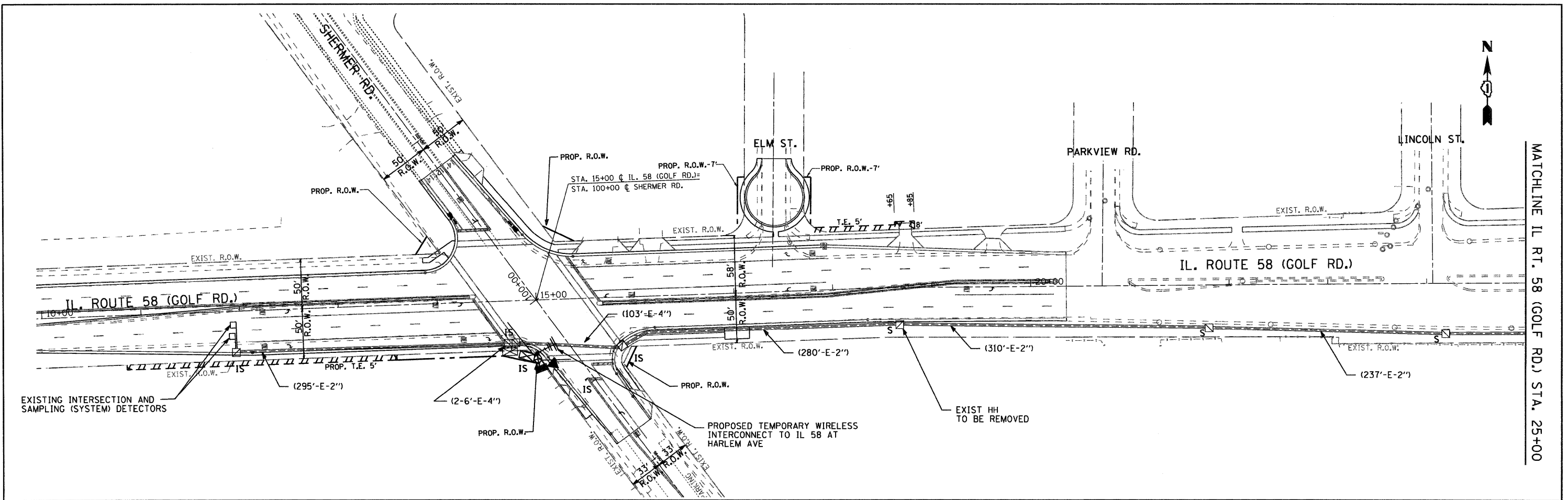


REGINA WEBSTER
AND ASSOC. INC.
CIVIL ENGINEERING CONSULTANTS
660 North Cicero Avenue, Suite 500
Chicago, Illinois 60623-1369



THE TRAFFIC SIGNAL CONTROL EQUIPMENT FOR THIS PROJECT SHALL BE 'ECONOLITE' TO MATCH THE EXISTING ADJACENT SYSTEM

FILE NAME =	USER NAME = #USER#	DESIGNED - DW	REVISED -	STATE OF ILLINOIS DEPARTMENT OF TRANSPORTATION	TEMPORARY INTERCONNECT PLAN IL. ROUTE 58 AT SHERMER RD.			F.A.P. RTE.	SECTION	COUNTY	TOTAL SHEETS	SHEET NO.
#FILEL#		DRAWN - DW	REVISED -		SCALE: 1"=50'	SHEET NO. OF .. SHEETS	STA. TO STA.	339	584-Y-N-1	COOK	61	36
		CHECKED - JS	REVISED -					CONTRACT NO. 60D25				
		DATE - 11/09/09	REVISED -					FED. ROAD DIST. NO. ILLINOIS FED. AID PROJECT				