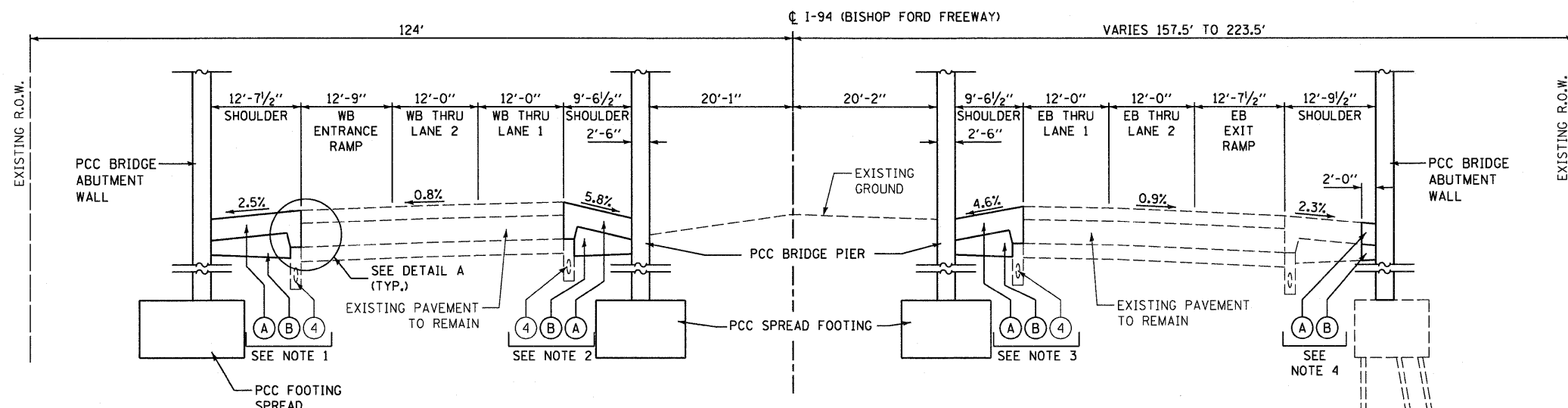
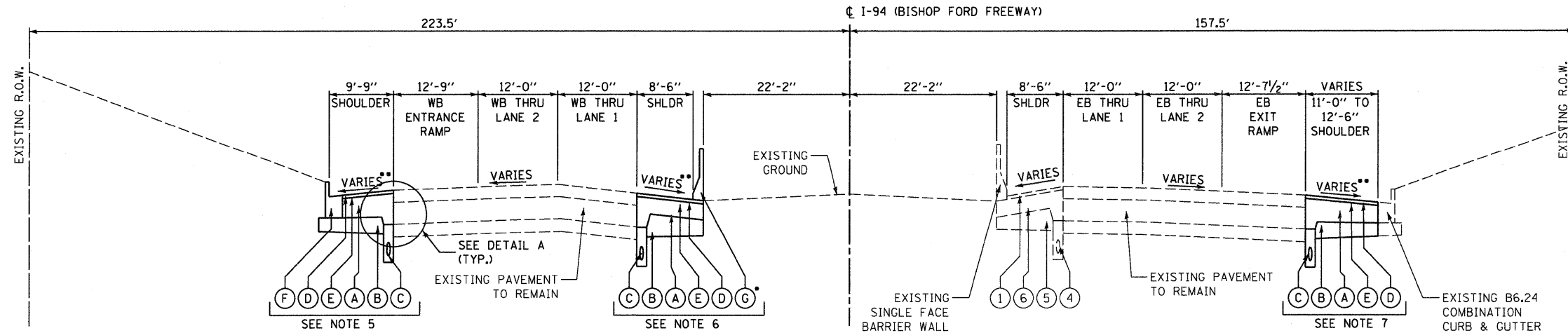


**EXISTING I-94 TYPICAL SECTION**  
AT COTTAGE GROVE AVENUE



**PROPOSED I-94 TYPICAL SECTION**  
AT COTTAGE GROVE AVENUE



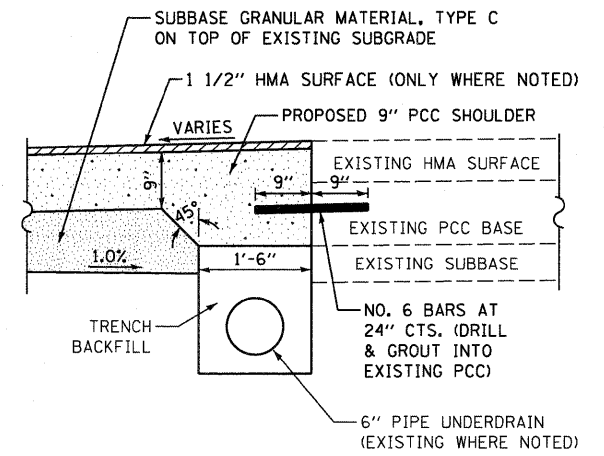
- BEGIN AT STA 499+67.08
- MATCH SURROUNDING EXISTING SHOULDER PAVEMENT

**PROPOSED I-94 TYPICAL SECTION**  
WEST OF I.C.R.R. UNDERPASS

- EXISTING LEGEND:**
- ① ASPHALT SURFACE
  - ② 10" CONCRETE BASE
  - ③ 6" SUBBASE GRANULAR MATERIAL
  - ④ 6" PIPE UNDERDRAIN
  - ⑤ STABILIZED SUBBASE
  - ⑥ 9" CONCRETE SHOULDER
- ROADWAY REMOVAL ITEM  
 STRUCTURE REMOVAL ITEM (SEE STRUCTURE PLANS)

- NOTES:**
- FROM STA 504+68.25 TO STA 505+64.84
  - FROM STA 504+54.53 TO STA 505+53.03
  - FROM STA 504+46.31 TO STA 505+58.71
  - FROM STA 504+46.77 TO STA 505+30.38
  - FROM STA 501+58.95 TO STA 502+03.82
  - FROM STA 488+98.40 TO STA 501+70.27
  - FROM STA 501+63.45 TO STA 501+99.14
  - SEE SHEET 8 FOR SHOULDER SURFACE HMA MIXTURE REQUIREMENTS
  - CONTRACTOR SHALL MAINTAIN PIPE UNDERDRAIN SYSTEM DURING CONSTRUCTION

- PROPOSED LEGEND:**
- (A) PCC SHOULDER, 9"
  - (B) 4" MINIMUM SUBBASE GRANULAR MATERIAL, TYPE C, ON TOP OF EXISTING SUBGRADE
  - (C) 6" PIPE UNDERDRAIN
  - (D) 1 1/2" HMA SURFACE COURSE, MIX "D", N70 (IL-9.5 mm)
  - (E) BITUMINOUS MATERIAL PRIME COAT
  - (F) COMBINATION CURB AND GUTTER, TYPE B6.24
  - (G) SINGLE FACE BARRIER WALL (32")



**DETAIL A**

FILE NAME = ...DI-60F65-ah089-typical2.dgn	DESIGNED - ITY	REVISED -	 600 WEST FULLTON STREET CHICAGO, ILLINOIS 60611-1256 TEL: 312 454 9100 FAX: 312 888 1217 WEB: www.sepsteingroup.com	<b>STATE OF ILLINOIS</b> <b>DEPARTMENT OF TRANSPORTATION</b>	<b>EXISTING AND PROPOSED TYPICAL SECTION</b>		F.A.I. RTE. 94	SECTION 1314B-1	COUNTY COOK	TOTAL SHEETS 110	SHEET NO. 9	
PLOT TIME = 9:25:39 AM	DRAWN - ITY	REVISED -			<b>I-94 BISHOP FORD FREEWAY</b>		SCALE: N.T.S.	SHEET NO. 2 OF 2 SHEETS	STA. N/A	TO STA. N/A	ILLINOIS FED. AID PROJECT	
PLOT DATE = 7/19/2010	CHECKED - TRP	REVISED -										
	DATE - 07/19/2010	REVISED -										