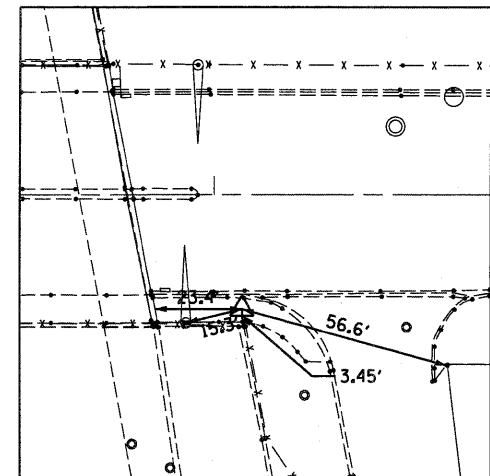
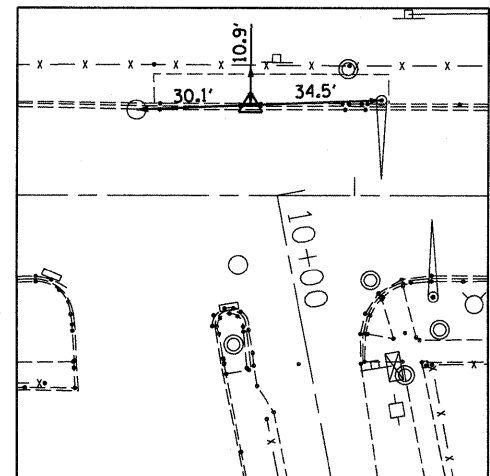


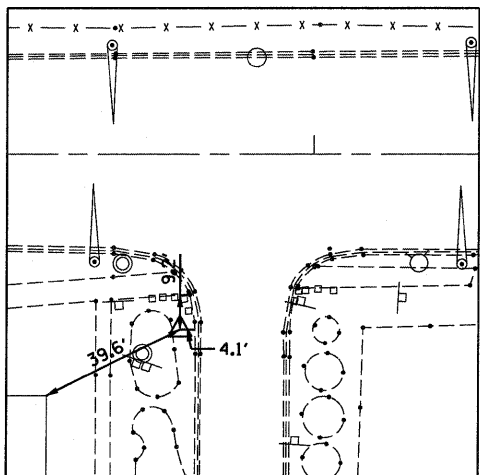
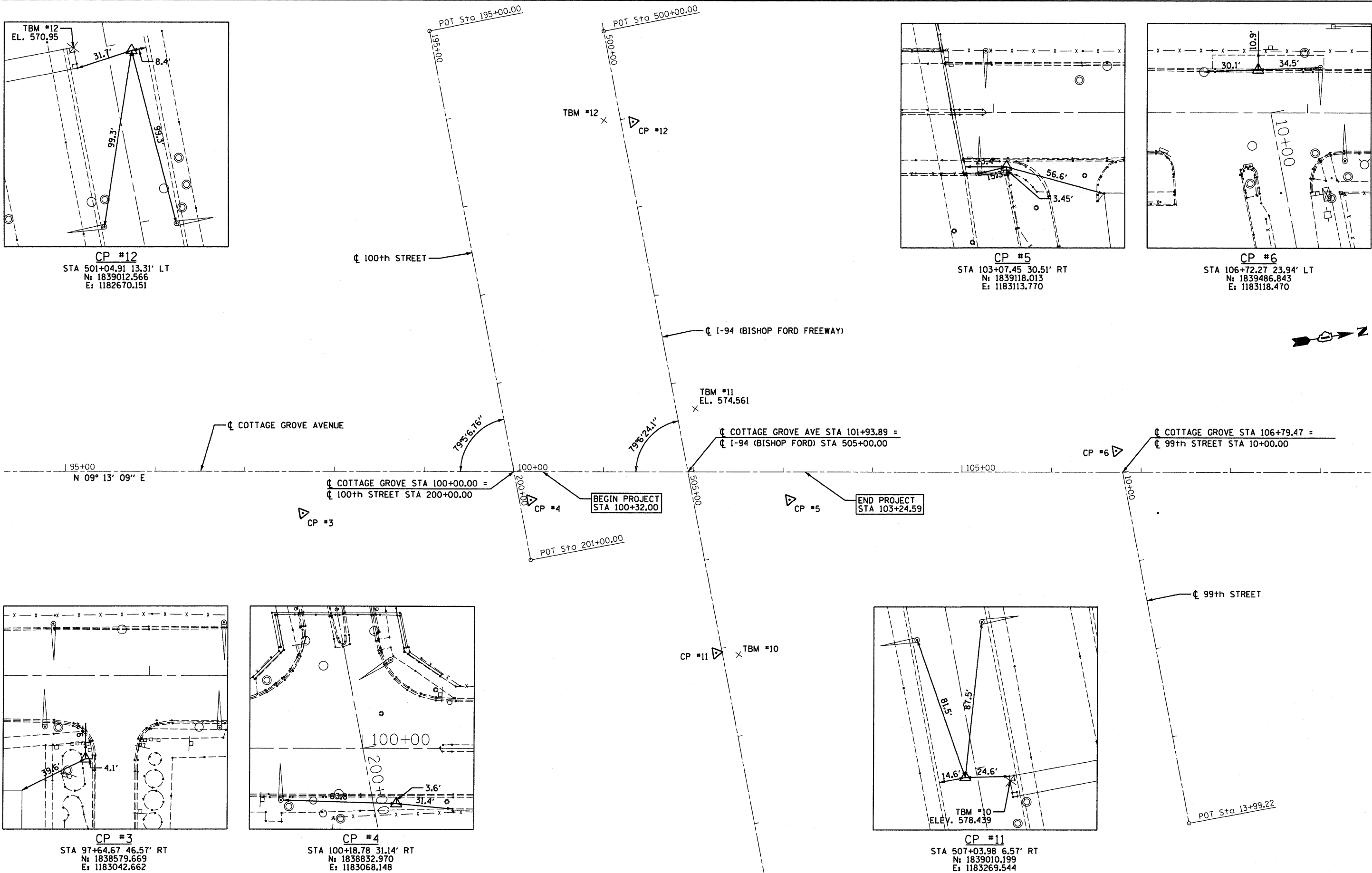
**CP #12**  
 STA 501+04.91 13.31' LT  
 N: 1839012.566  
 E: 1182670.151



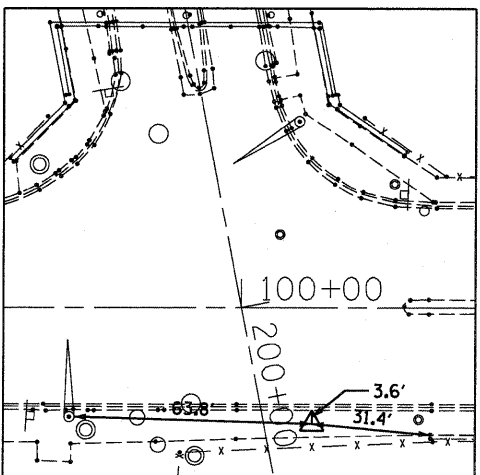
**CP #5**  
 STA 103+07.45 30.51' RT  
 N: 1839118.013  
 E: 1183113.770



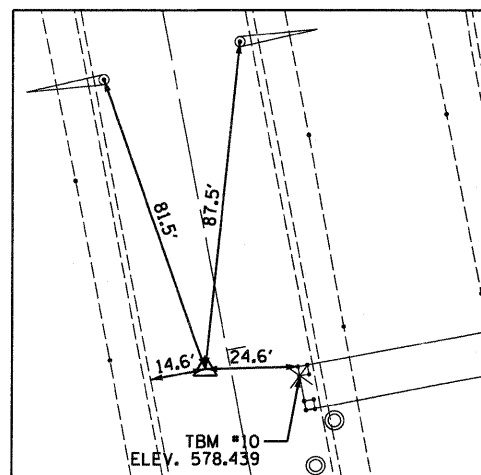
**CP #6**  
 STA 106+72.27 23.94' LT  
 N: 1839486.843  
 E: 1183118.470



**CP #3**  
 STA 97+64.67 46.57' RT  
 N: 1838579.669  
 E: 1183042.662



**CP #4**  
 STA 100+18.78 31.14' RT  
 N: 1838832.970  
 E: 1183068.148



**CP #11**  
 STA 507+03.98 6.57' RT  
 N: 1839010.199  
 E: 1183269.544

FILE NAME =	DESIGNED - ITY	REVISED -
...D1-60F65-sh1010-ATB.dgn	DRAWN - ITY	REVISED -
PLOT TIME = 12:41:57 PM	CHECKED - TRP	REVISED -
PLOT DATE = 7/16/2010	DATE - 07/19/2010	REVISED -

**SEPSTEIN**  
 800 WEST FULLTON STREET  
 CHICAGO, ILLINOIS 60611-2298  
 TEL: 312 456 9100  
 FAX: 312 456 1217  
 WEB: www.sepsteinglobal.com

**STATE OF ILLINOIS  
 DEPARTMENT OF TRANSPORTATION**

**ALIGNMENT, TIES AND BENCHMARKS**  
 SCALE: 1" = 50'  
 SHEET NO. 1 OF 1 SHEETS  
 STA. 100+32.00 TO STA. 103+24.59

F.A.I. RTE.	SECTION	COUNTY	TOTAL SHEETS	SHEET NO.
94	1314B-1	COOK	110	10
CONTRACT NO. 60F65				
ILLINOIS FED. AID PROJECT				