



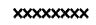
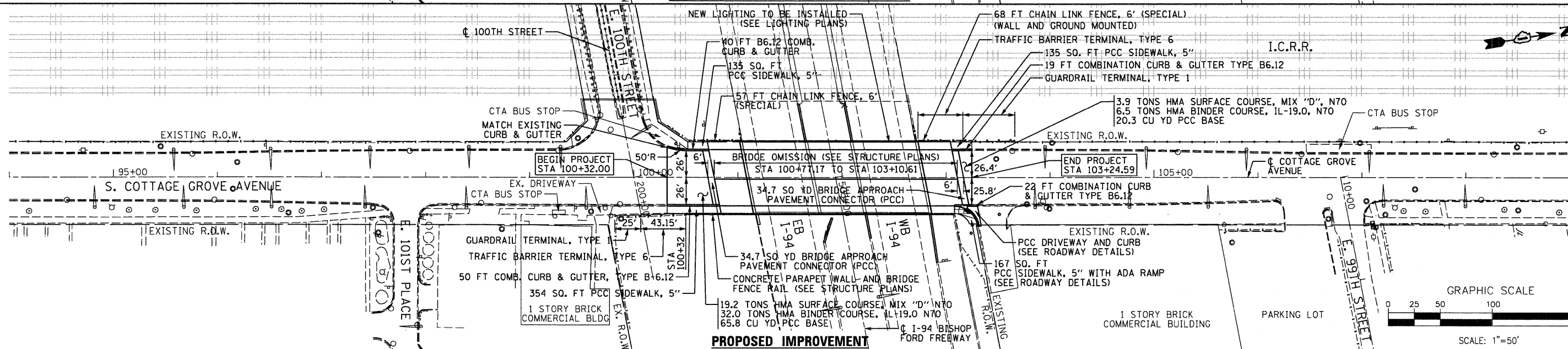
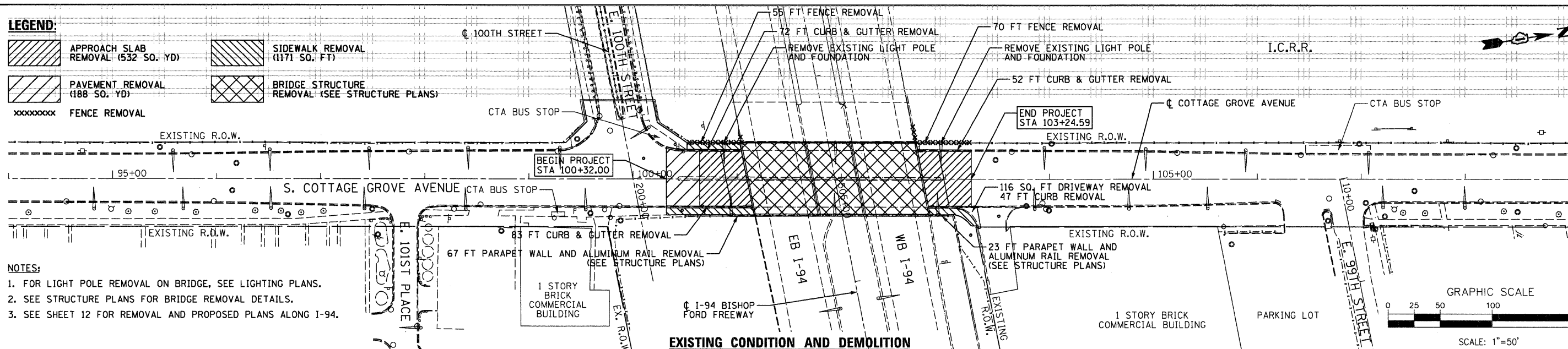


LEGEND:

-  APPROACH SLAB REMOVAL (532 SQ. YD)
-  SIDEWALK REMOVAL (1171 SQ. FT)
-  PAVEMENT REMOVAL (188 SQ. YD)
-  BRIDGE STRUCTURE REMOVAL (SEE STRUCTURE PLANS)
-  FENCE REMOVAL

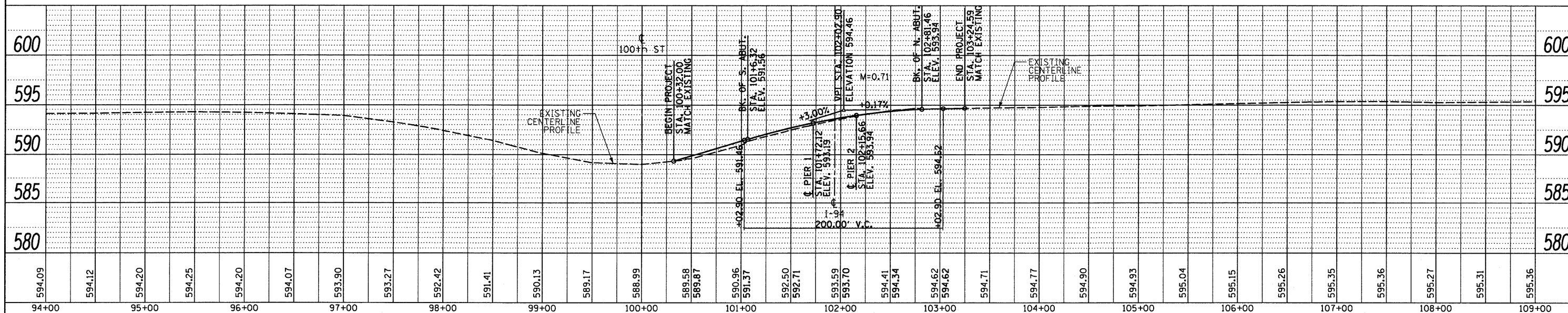
NOTES:


1. FOR LIGHT POLE REMOVAL ON BRIDGE, SEE LIGHTING PLANS.
2. SEE STRUCTURE PLANS FOR BRIDGE REMOVAL DETAILS.
3. SEE SHEET 12 FOR REMOVAL AND PROPOSED PLANS ALONG I-94.



PLAN	SURVEYED	DATE
	PLOTTED	
	CHECKED	
	REVISIONS	
	NO. OF WAYS CHECKED	
	DATE	
	FILE NAME	

PROFILE	SURVEYED	DATE
	PLOTTED	
	CHECKED	
	REVISIONS	
	NO. OF WAYS CHECKED	
	DATE	
	FILE NAME	



FILE NAME = ...\\01-60F65-sht011-plnprf1.dgn	DESIGNED - ITY	REVISED -	 STATE OF ILLINOIS DEPARTMENT OF TRANSPORTATION	ROADWAY PLAN AND PROFILE	F.A.I. RTE. 94 SECTION 1314B-1 COUNTY COOK TOTAL SHEETS 110 SHEET NO. 11 CONTRACT NO. 60F65
PLOT TIME = 12:48:38 PM	DRAWN - ITY	REVISED -		SCALE: 1" = 50'	
PLOT DATE = 7/19/2018	CHECKED - TRP	REVISED -		SHEET NO. 1 OF 2 SHEETS	
	DATE - 07/19/2010	REVISED -		STA. 100+32.00 TO STA. 103+24.59	