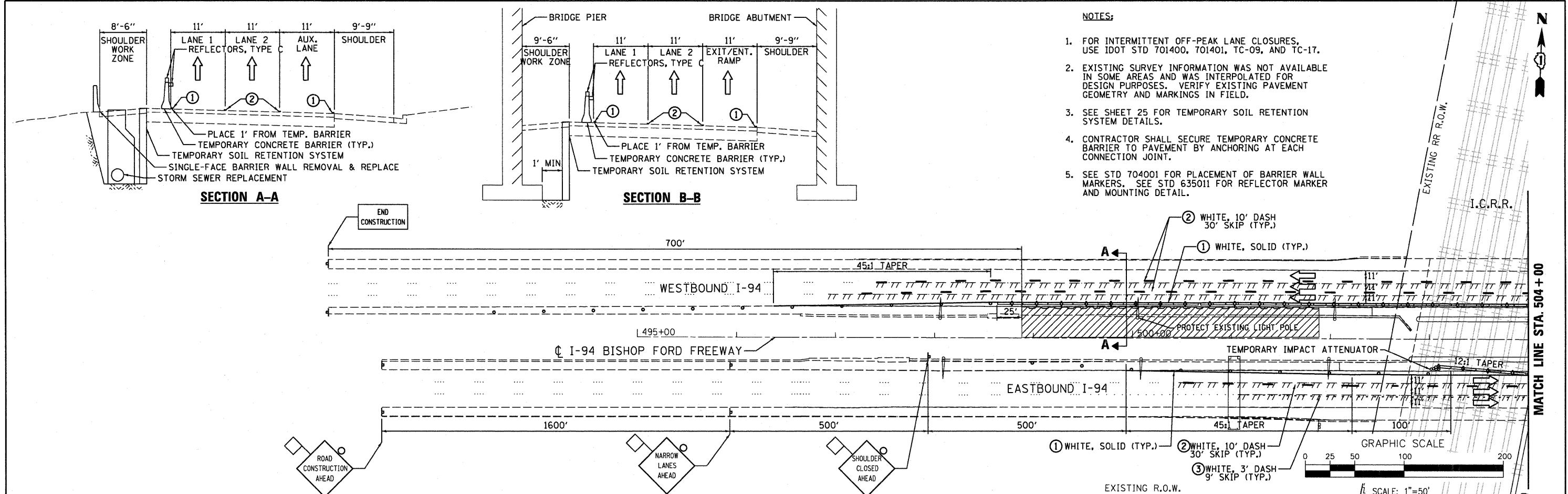


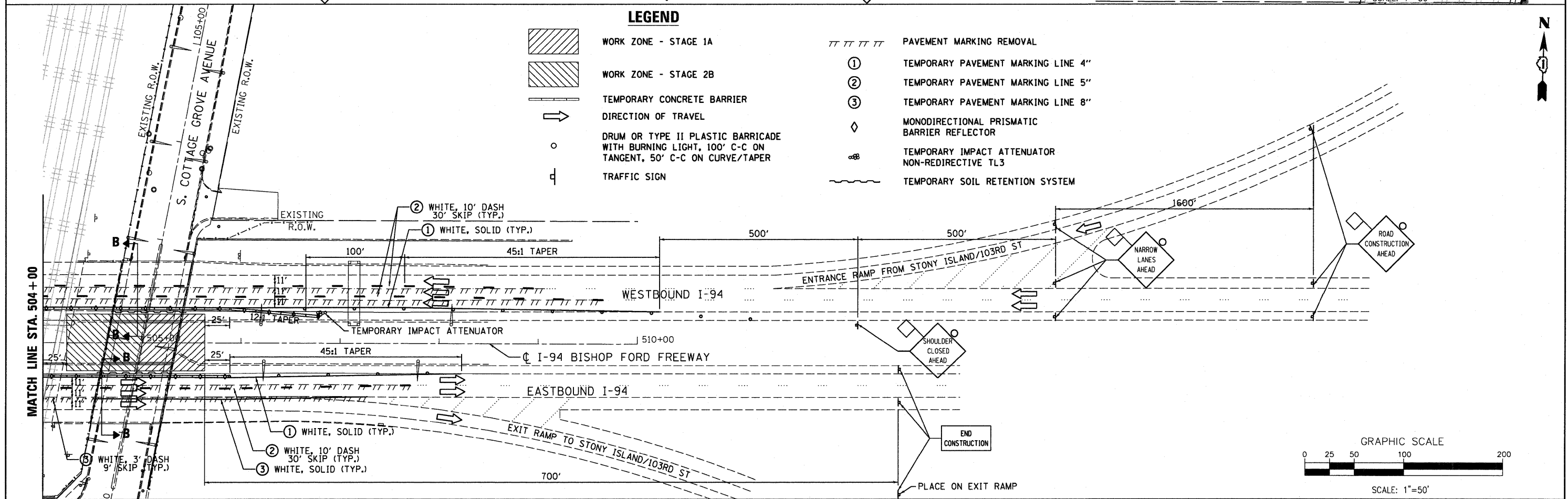
NOTES:

- FOR INTERMITTENT OFF-PEAK LANE CLOSURES, USE IDOT STD 701400, 701401, TC-09, AND TC-17.
- EXISTING SURVEY INFORMATION WAS NOT AVAILABLE IN SOME AREAS AND WAS INTERPOLATED FOR DESIGN PURPOSES. VERIFY EXISTING PAVEMENT GEOMETRY AND MARKINGS IN FIELD.
- SEE SHEET 25 FOR TEMPORARY SOIL RETENTION SYSTEM DETAILS.
- CONTRACTOR SHALL SECURE TEMPORARY CONCRETE BARRIER TO PAVEMENT BY ANCHORING AT EACH CONNECTION JOINT.
- SEE STD 704001 FOR PLACEMENT OF BARRIER WALL MARKERS. SEE STD 635011 FOR REFLECTOR MARKER AND MOUNTING DETAIL.



LEGEND

- WORK ZONE - STAGE 1A
- WORK ZONE - STAGE 2B
- TEMPORARY CONCRETE BARRIER
- DIRECTION OF TRAVEL
- DRUM OR TYPE II PLASTIC BARRICADE WITH BURNING LIGHT, 100' C-C ON TANGENT, 50' C-C ON CURVE/TAPER
- TRAFFIC SIGN
- PAVEMENT MARKING REMOVAL
- TEMPORARY PAVEMENT MARKING LINE 4"
- TEMPORARY PAVEMENT MARKING LINE 5"
- TEMPORARY PAVEMENT MARKING LINE 8"
- MONODIRECTIONAL PRISMATIC BARRIER REFLECTOR
- TEMPORARY IMPACT ATTENUATOR NON-REDIRECTIVE TL3
- TEMPORARY SOIL RETENTION SYSTEM



FILE NAME = ...ND1-60F65-sh1016-staging4.dgn	DESIGNED - IY	REVISED -	 800 WEST FULTON STREET CHICAGO, ILLINOIS 60611-0209 TEL 312 454 9100 FAX 312 559 1217 WEB www.sepsteinglobal.com	STATE OF ILLINOIS DEPARTMENT OF TRANSPORTATION	SUGGESTED STAGES OF CONSTRUCTION & I-94 INSIDE SHOULDER CLOSURE - STAGES 1A & 2B		F.A.I. RTE. 94	SECTION 1314B-1	COUNTY COOK	TOTAL SHEETS 110	SHEET NO. 16	
PLOT TIME = 7:41:01 PM	DRAWN - SK	REVISED -			SCALE: 1" = 50'	SHEET NO. 4 OF 5 SHEETS	STA. 495+00.00 TO STA. 510+00.00	CONTRACT NO. 60F65				
PLOT DATE = 8/9/2010	CHECKED - TRP	REVISED -			ILLINOIS FED. AID PROJECT							
DATE - 07/19/2010	REVISIONS	REVISED -										