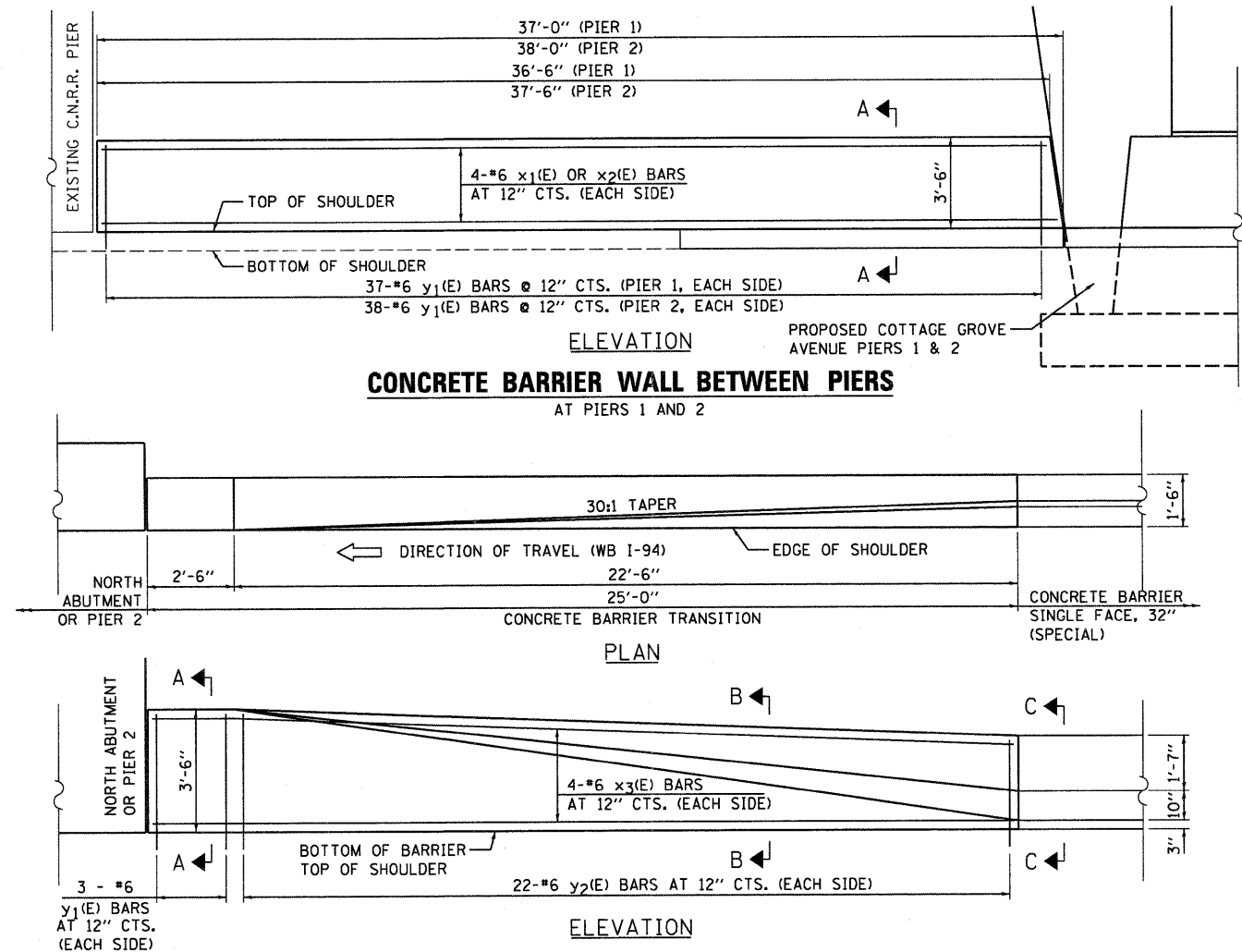
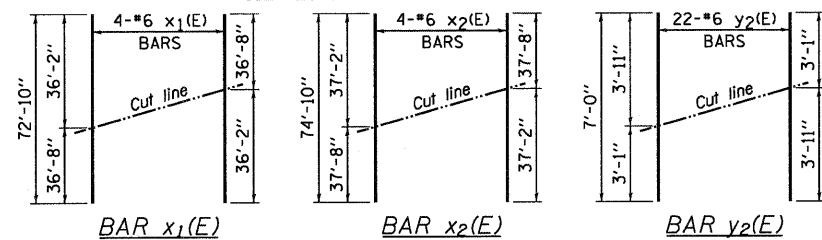


ADA RAMP AND DRIVEWAY DETAIL



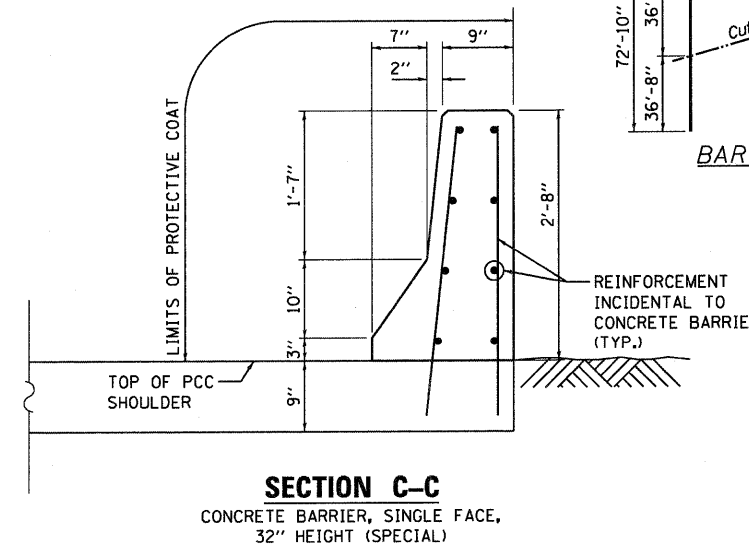
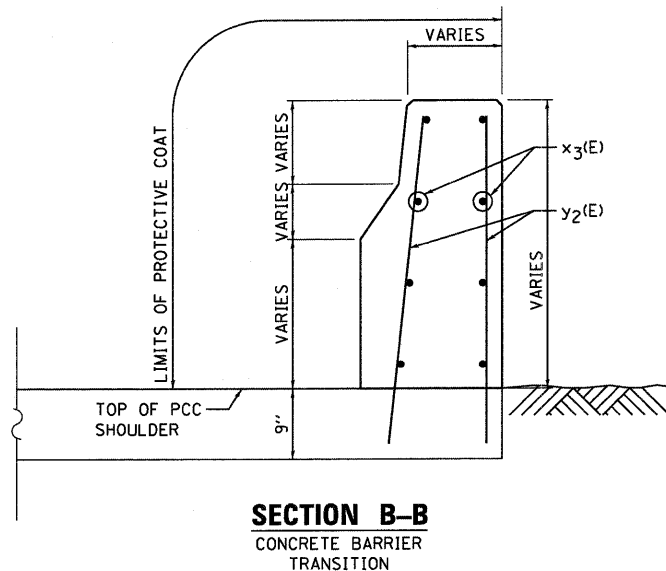
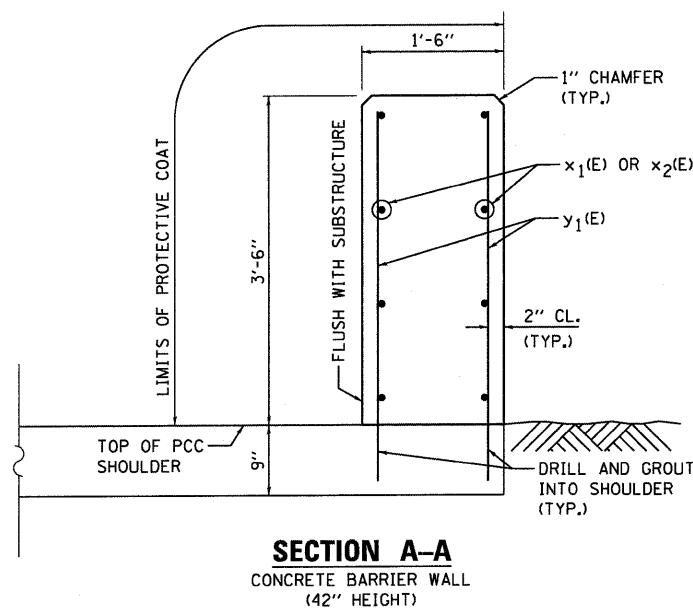
CONCRETE BARRIER TRANSITION
MIRROR DETAIL FOR WB I-94 APPROACH TO PIER 2

FIELD CUTTING DIAGRAMS
ORDER BARS FULL LENGTH. CUT AS SHOWN AND USE REMAINDER OF BARS IN OPPOSITE FACE.



BILL OF MATERIAL

BAR	No.	Size	Length	Shape
x ₁ (E)	4	#6	72'-10"	---
x ₂ (E)	4	#6	74'-10"	---
x ₃ (E)	8	#6	24'-8"	---
y ₁ (E)	156	#6	3'-11"	---
y ₂ (E)	22	#6	7'-0"	---
Item		Unit	Quantity	
Reinforcement Bars, Epoxy Coated		Lbs.	2,333	
Concrete Structures		Cu. Yd.	18.4	
Protective Coat		Sq. Yd.	53.8	



FILE NAME =	DESIGNED - ITY	REVISED -
...\\DI-60F65-sht024-details.dgn	DRAWN - ITY	REVISED -
PLOT TIME = 12:42:42 PM	CHECKED - TRP	REVISED -
PLOT DATE = 7/16/2010	DATE - 07/19/2010	REVISED -

SEPSTEIN

600 WEST FULTON STREET
CHICAGO, ILLINOIS 60661-1229

TEL 312 454 9100
FAX 312 586 1217
WEB www.sepsteingroup.com

STATE OF ILLINOIS
DEPARTMENT OF TRANSPORTATION

ROADWAY DETAILS

SCALE: N.T.S. SHEET NO. 1 OF 1 SHEETS STA. TO STA.

F.A.I. RTE.	SECTION	COUNTY	TOTAL SHEETS	SHEET NO.
94	1314B-1	COOK	110	24
			CONTRACT NO. 60F65	
ILLINOIS FED. AID PROJECT				