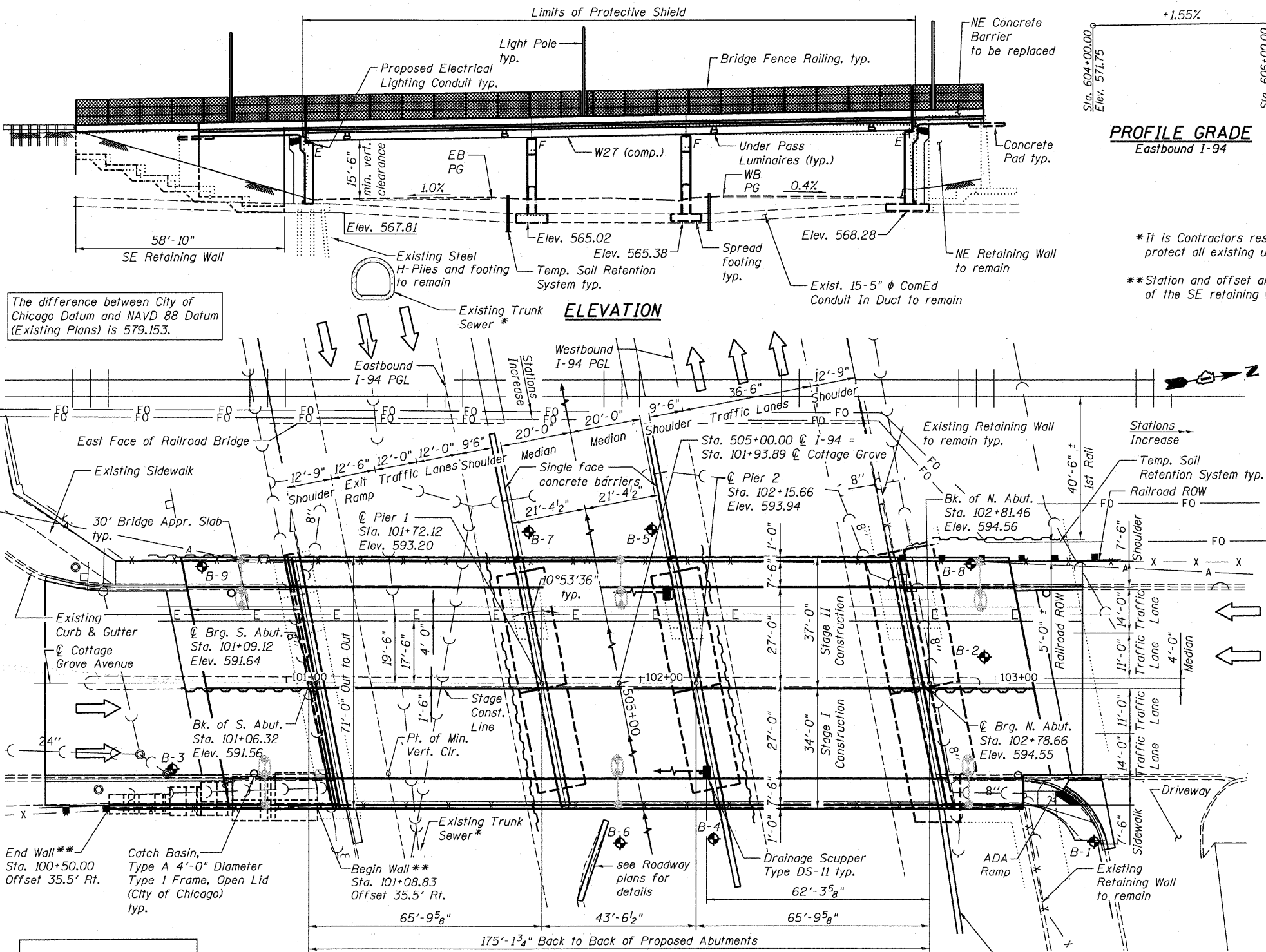


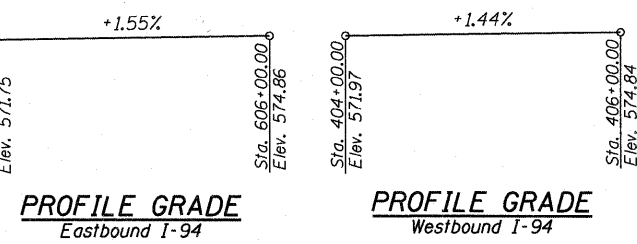
STATE OF ILLINOIS
DEPARTMENT OF TRANSPORTATION

BM-#10: Chiseled square located on the southeast corner of southwest leg of concrete overhead sign footing at 17.68 ft Left from C/L I-94 Sta. 507+10.85, Elev. 578.44.

Existing Structure: S.N. 016-2119 Built in 1960 as part of FAI-94 Section 066-1314-CF at Sta. 101+93.89. Existing structure consists of a three simple span 36"x33" PPC deck beams with a bituminous overlay supported on two closed abutments and two solid stem piers. Except for South Abutment that is supported on steel HP piles, the substructure units are founded on spread footing. Sidewalks, metal handrails, chain link fences and lighting are provided on each side of the bridge. Structure is 171'-10" long Back to Back of abutments and Out-to-Out deck width is 71'-0". Structure to be removed and replaced except the existing piles supported South Abutment will be retained to support the proposed South Abutment. Existing SE Retaining Wall to be removed and replaced. Traffic to be maintained utilizing stage construction.



ELEVATION



LOADING HL-93
Allow 50#/sq. ft. for future wearing surface.

DESIGN SPECIFICATIONS
2007 AASHTO LRFD Bridge Design Specifications with 2008 and 2009 Interims

DESIGN STRESSES
FIELD UNITS

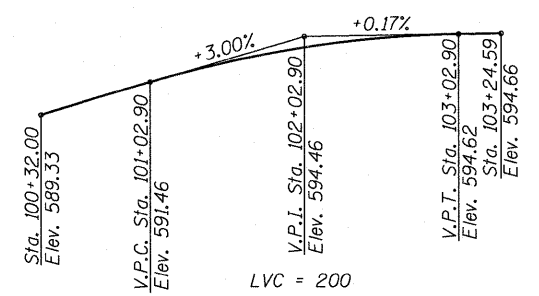
f'c = 3,500 psi
fy = 60,000 psi (Reinforcement)
fy = 50,000 psi (M270 Grade 50)
fy = 36,000 psi (M270 Grade 36)

SEISMIC DATA

Seismic Performance Zone (SPZ) = 1
Design Spectral Acceleration at 1.0 sec. (SD1) = 0.063g
Design Spectral Acceleration at 0.2 sec. (SDS) = 0.112g
Soil Site Class = C



Pijush K. Chatterjee 8/09/2010
Expires: 11/30/2010



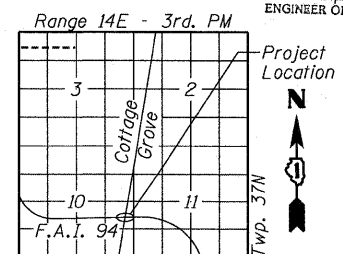
PROFILE GRADE
Cottage Grove

APPROVED
FOR STRUCTURAL ADEQUACY ONLY

Robert E. Anderson
ENGINEER OF BRIDGES AND STRUCTURES

NAME PLATE

Existing Name Plate shall be cleaned and relocated next to new Name Plate. Cost included with Name Plates.



LOCATION SKETCH

GENERAL PLAN AND ELEVATION
FAI 94 AT COTTAGE GROVE AVENUE
FAI 94 SECTION 1314B-1
COOK COUNTY
STATION 505+00.00
STRUCTURE NO. 016-2119

DESIGNED	EV
CHECKED	PC
DRAWN	JCP
CHECKED	JPO

PLAN

SEPSTEIN
600 WEST FULTON STREET
CHICAGO, ILLINOIS
60661-1259
TEL 312 454 9100
FAX 312 559 1217
WEB www.epsteinglobal.com

SHEET NO. S1	F.A.I. RTE. 94	SECTION 1314B-1	COUNTY COOK	TOTAL SHEETS 110	SHEET NO. 37
S52 SHEETS			CONTRACT NO. 60F65		
ILLINOIS FED. AID PROJECT					

8/9/2010 3:13:49 PM P:\Projects\2000002925 - IDOT P1B - 152\CAD\CADD Sheets\Bridge Phase 2010\1243-001-GPE.dgn