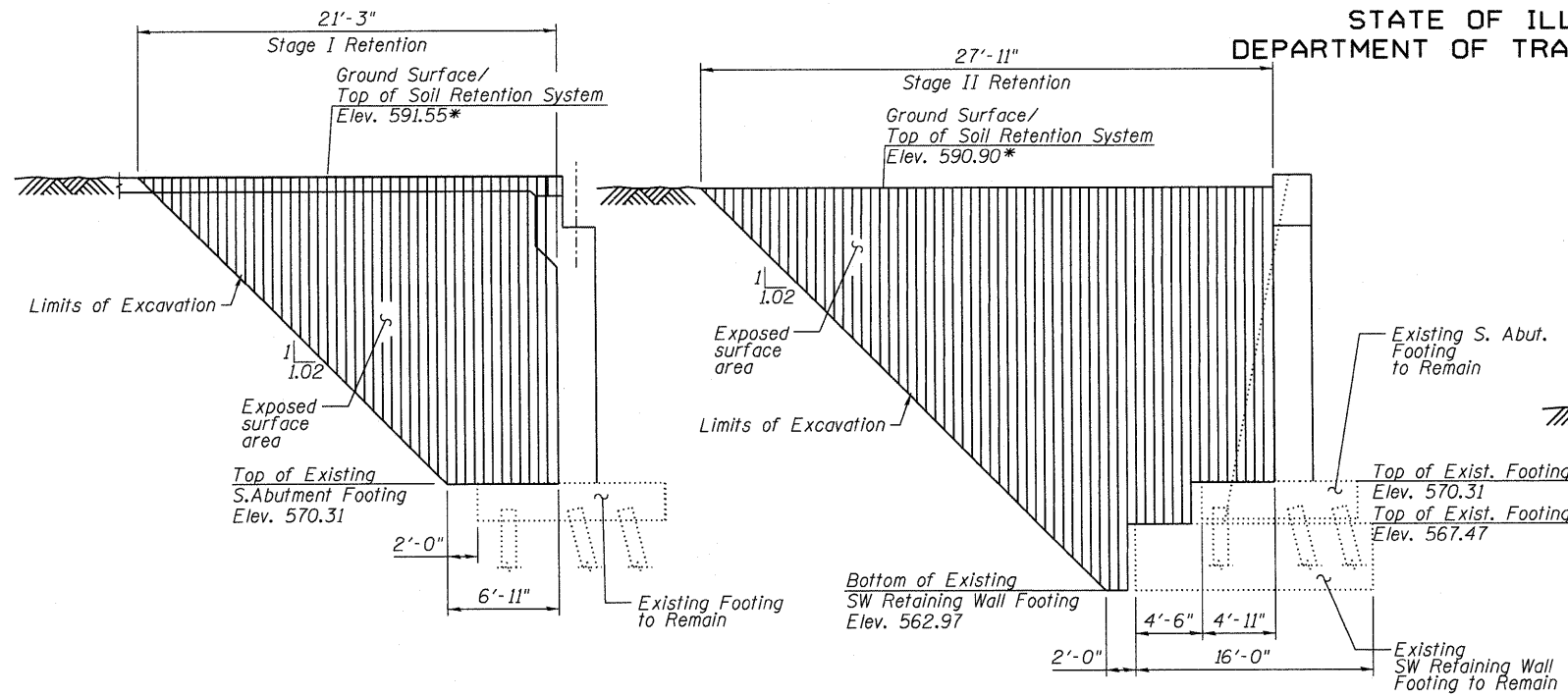
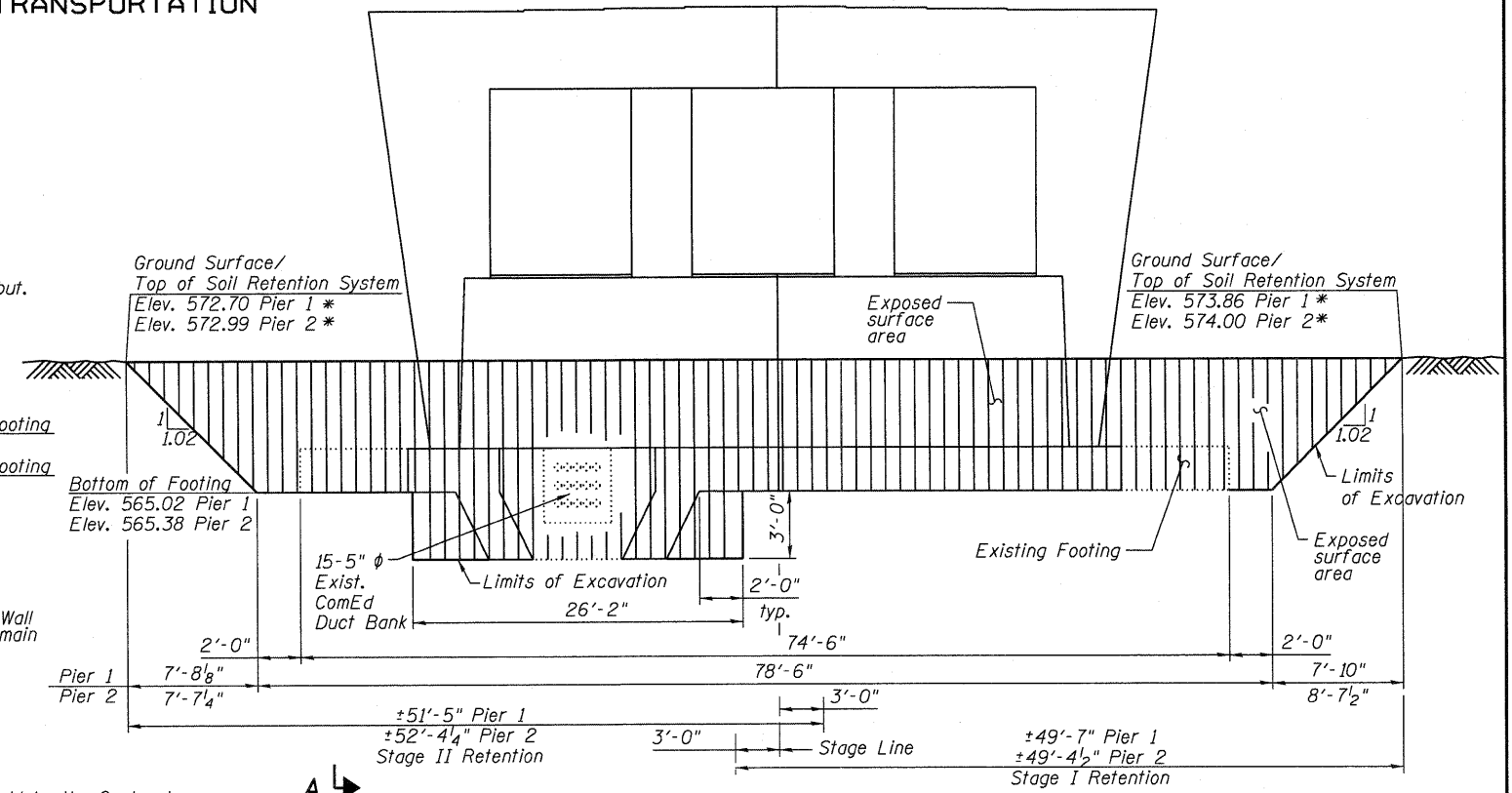


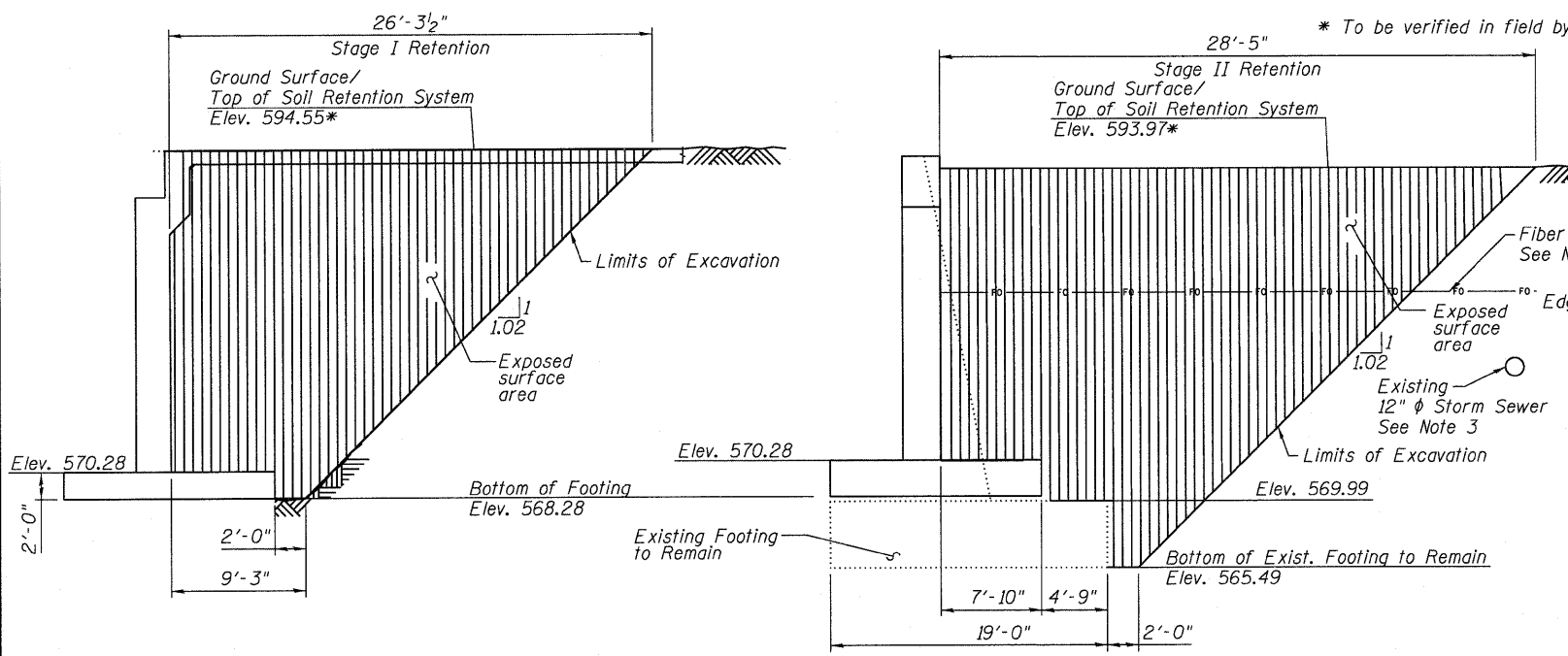
STATE OF ILLINOIS  
DEPARTMENT OF TRANSPORTATION



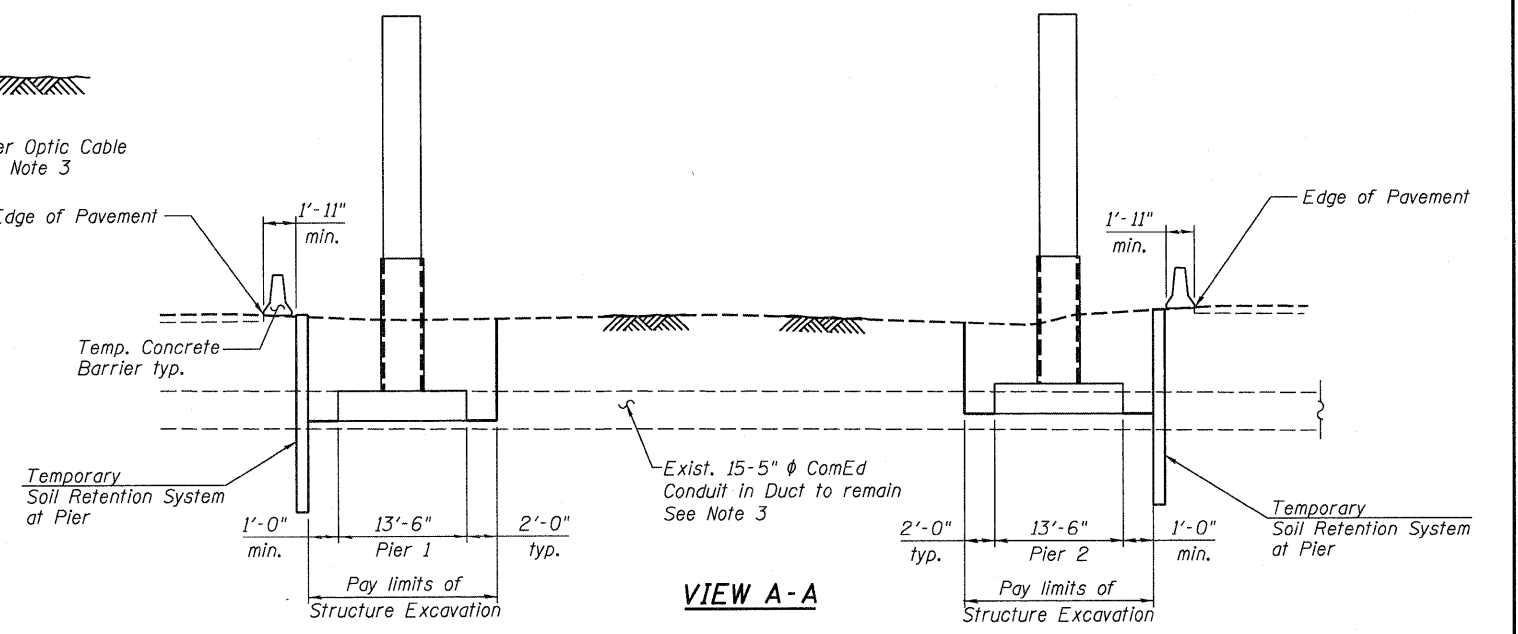
**AT STAGE LINE**  
**AT STAGE II**  
**TEMPORARY SOIL RETENTION SYSTEM AT SOUTH ABUTMENT**



**TEMPORARY SOIL RETENTION SYSTEM AT PIERS**



**AT STAGE LINE**  
**AT STAGE II**  
**TEMPORARY SOIL RETENTION SYSTEM AT NORTH ABUTMENT**



**VIEW A-A**

- Notes:
1. A cantilevered sheet piling design does not appear feasible and additional members or other retention systems may be necessary. The Contractor shall submit a temporary soil retention system design including plan details and calculations for review and acceptance by the Engineer.
  2. For a plan view of the temporary soil retention systems see sheet S4.
  3. It is Contractor's responsibility to locate and protect all existing utilities during construction.
  4. See sheet S46 for Temporary Concrete Barrier.
  5. See Roadway plans for Temporary Concrete Barrier quantities.

**BILL OF MATERIAL**

ITEM	UNIT	QUANTITY
Temporary Soil Retention System	Sq. Ft.	3,970

**TEMPORARY SOIL  
RETENTION SYSTEM  
STRUCTURE NO. 016-2119**

DESIGNED	EV
CHECKED	PC
DRAWN	JCP
CHECKED	JPO

 600 WEST FULTON STREET CHICAGO, ILLINOIS 60661-1259 TEL 312 454 9100 FAX 312 558 1217 WEB www.epsteinglobal.com	SHEET NO. S5	F.A.I. RTE. 94	SECTION 1314B-1	COUNTY COOK	TOTAL SHEETS 110	SHEET NO. 41
	S52 SHEETS	CONTRACT NO. 60F65			ILLINOIS FED. AID PROJECT	