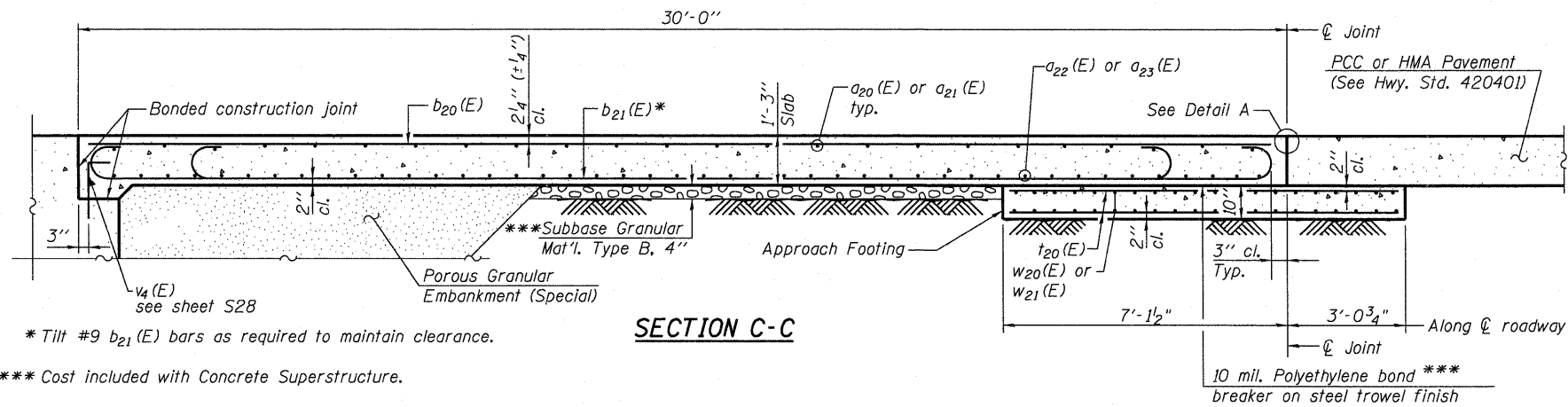


STATE OF ILLINOIS  
DEPARTMENT OF TRANSPORTATION

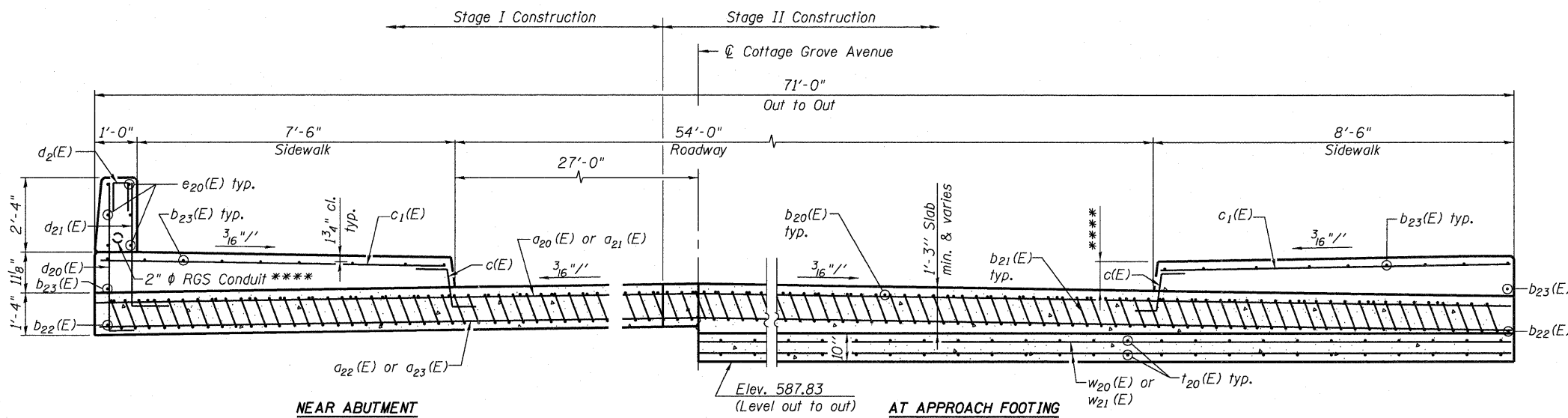
SOUTH APPROACH  
BILL OF MATERIAL



SECTION C-C

\* Tilt #9 b21(E) bars as required to maintain clearance.

\*\*\* Cost included with Concrete Superstructure.

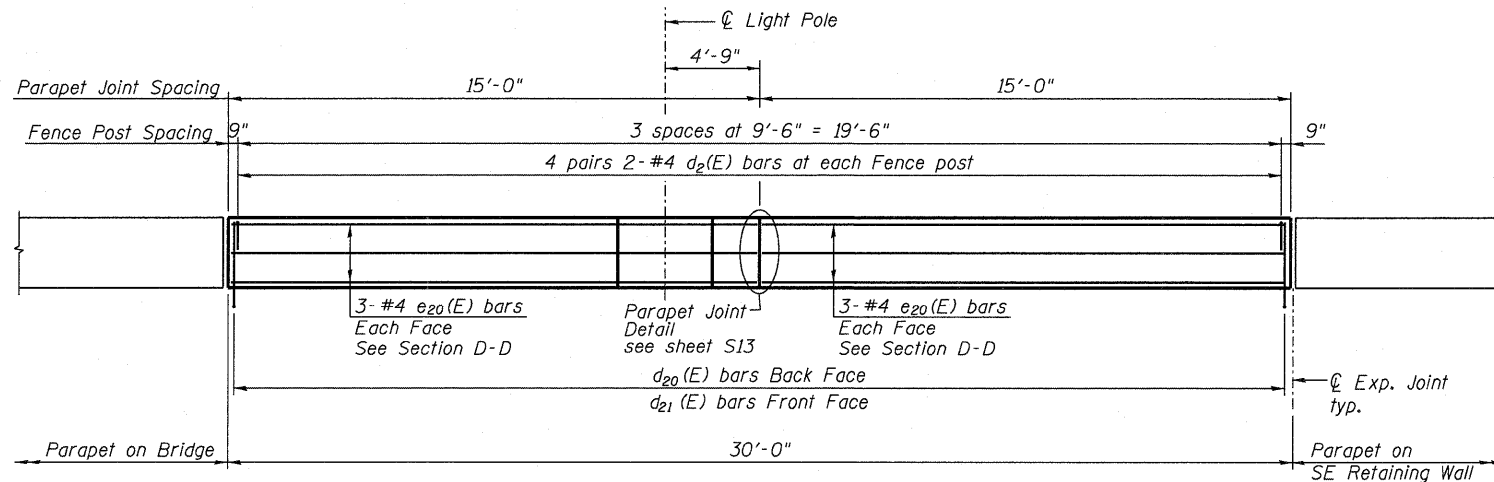


SECTION D-D

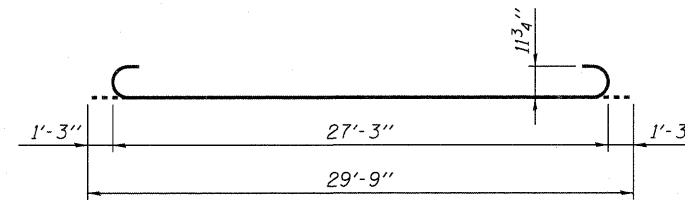
(See Plan for dimensions not shown)

\*\*\*\* Varies from 8" at Bridge to 6" at End of Approach Slabs

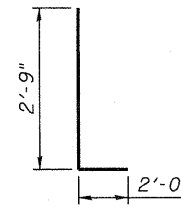
\*\*\*\* Conduit shall have minimum 1/2" clearance from all reinforcement.



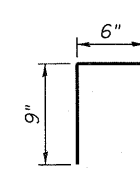
PARAPET ELEVATION  
(Front Face of SE Parapet Shown)



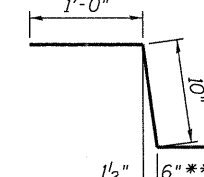
BAR b21(E)



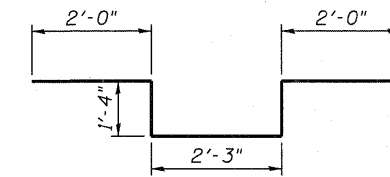
BAR d3(E)



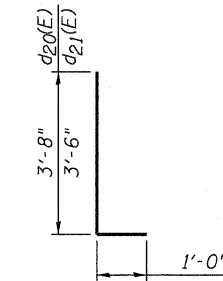
BAR d2(E)



BAR c(E)



BAR d4(E)



BARS d20(E) AND d21(E)

| Bar                              | No. | Size | Length   | Shape  |
|----------------------------------|-----|------|----------|--------|
| a20(E)                           | 25  | #4   | 34' - 2" | —      |
| a21(E)                           | 25  | #4   | 37' - 3" | —      |
| a22(E)                           | 46  | #5   | 34' - 2" | —      |
| a23(E)                           | 46  | #5   | 37' - 3" | —      |
| a24(E)                           | 16  | #5   | 2' - 10" | —      |
| b20(E)                           | 59  | #4   | 29' - 8" | —      |
| b21(E)                           | 171 | #9   | 29' - 9" | —      |
| b22(E)                           | 2   | #9   | 29' - 8" | —      |
| b23(E)                           | 18  | #5   | 29' - 8" | —      |
| c(E)                             | 62  | #5   | 2' - 4"  | —      |
| c1(E)                            | 62  | #5   | 8' - 3"  | —      |
| d2(E)                            | 8   | #4   | 2' - 0"  | —      |
| d3(E)                            | 3   | #6   | 4' - 9"  | —      |
| d4(E)                            | 5   | #6   | 8' - 11" | —      |
| d20(E)                           | 31  | #4   | 4' - 8"  | —      |
| d21(E)                           | 31  | #6   | 4' - 6"  | —      |
| e20(E)                           | 12  | #4   | 14' - 8" | —      |
| t20(E)                           | 146 | #4   | 9' - 9"  | —      |
| w20(E)                           | 42  | #5   | 34' - 2" | —      |
| w21(E)                           | 42  | #5   | 37' - 3" | —      |
| Concrete Structures              |     |      | Cu. Yd.  | 22.2   |
| Concrete Superstructure          |     |      | Cu. Yd.  | 115.0  |
| Bridge Deck Grooving             |     |      | Sq. Yd.  | 180    |
| Protective Coat                  |     |      | Sq. Yd.  | 249    |
| Reinforcement Bars, Epoxy Coated |     |      | Pound    | 29,190 |
| Bar Splicers (E)                 |     |      | Each     | 113    |

\*\* In lieu of bottom leg, c(E) bars may be cored and set according to Article 509.06 of Standard Specifications. Cored holes shall be roughened or scored per manufacturer's recommendations. Maximum depth of cored shall not exceed 6".

Notes:

1. For Detail A, see sheet S19.
2. Approach slab and parapet concrete shall be paid for as Concrete Superstructure.
3. Approach footing concrete shall be paid for as Concrete Structures.
4. Reinforcement shall be paid for as Reinforcement Bars, Epoxy Coated.
5. The approach footing maximum applied service bearing pressure (Qmax) = 2.0 ksf.
6. For Bar Splicer (E) details, see sheet S45.
7. Cost of excavation for approach footing included with Concrete Structures.
8. For Porous Granular Embankment (Special) and drainage treatment details, see sheet S28.
9. For Bridge Fence Railing, see sheet S25.

SOUTH APPROACH  
SLAB DETAILS  
STRUCTURE NO. 016-2119

|          |     |
|----------|-----|
| DESIGNED | EV  |
| CHECKED  | PC  |
| DRAWN    | JCP |
| CHECKED  | JPO |

|  |                                 |             |         |        |              |                           |
|--|---------------------------------|-------------|---------|--------|--------------|---------------------------|
| <br>600 WEST FULTON STREET<br>CHICAGO, ILLINOIS<br>60661-1259<br>TEL 312 454 9100<br>FAX 312 559 1217<br>WEB www.epsteinglobal.com | SHEET NO. S16<br><br>S52 SHEETS | F.A.I. RTE. | SECTION | COUNTY | TOTAL SHEETS | SHEET NO.                 |
|  |                                 | 94          | 1314B-1 | COOK   | 110          | 52                        |
| CONTRACT NO. 60F65   |                                 |             |         |        |              | ILLINOIS FED. AID PROJECT |