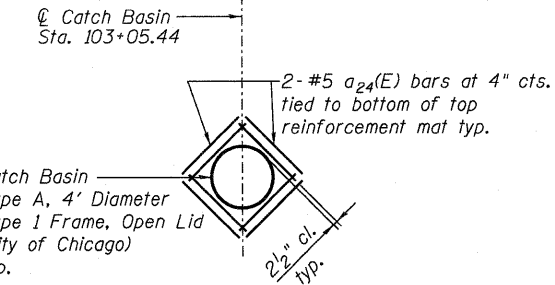
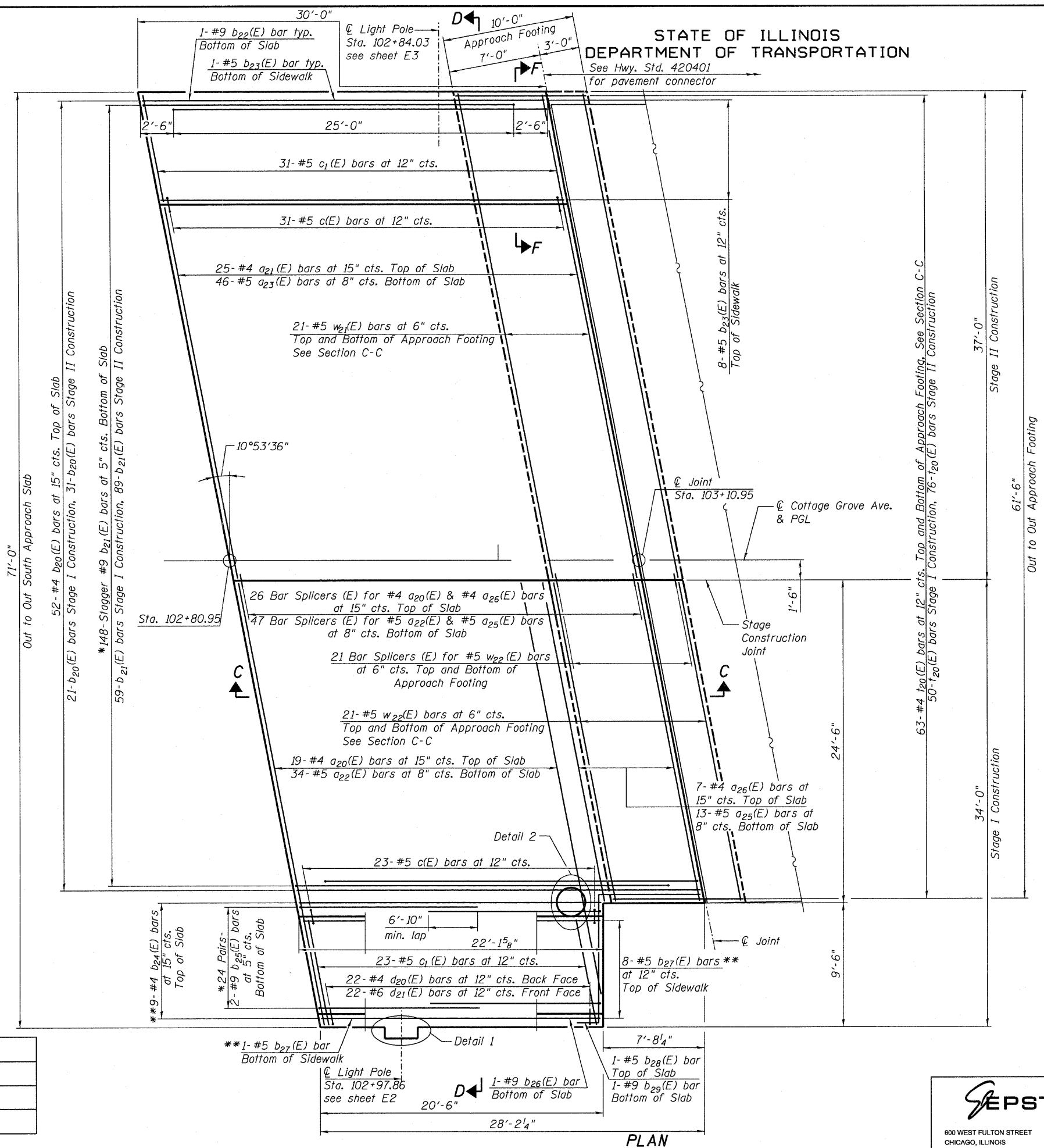


STATE OF ILLINOIS
DEPARTMENT OF TRANSPORTATION

See Hwy. Std. 420401
for pavement connector



DETAIL 2

* Tilt b21(E) and b25(E) bars as required to maintain clearance.
** Cut in field as required

- Notes:
1. Work this sheet with sheets S18 and S19.
 2. See sheet S18 for Sections C-C & D-D.
 3. For Detail 1 and View F-F, see sheet S19.
 4. For Parapet Elevation and Bill of Material, see sheet S18.
 5. For Bar Splicer (E) details, see sheet S45.
 6. a20(E) thru a25(E) bar spacings measured along \hat{C} Rdwy.

**NORTH APPROACH SLAB
STRUCTURE NO. 016-2119**

DESIGNED	EV
CHECKED	PC
DRAWN	JCP
CHECKED	JPO

	SHEET NO. S17	F.A.I. RTE.	SECTION	COUNTY	TOTAL SHEETS	SHEET NO.
	S52 SHEETS	94	1314B-1	COOK	110	53
				CONTRACT NO. 60F65		
ILLINOIS FED. AID PROJECT						

800 WEST FULTON STREET
CHICAGO, ILLINOIS
60661-1259

TEL 312 454 9100
FAX 312 559 1217
WEB www.epsteinglobal.com

8/9/2010 7:52:50 PM P:\Projects\000029225 - IDOT PTB 152\CAD\CADD Sheets\Bridge Phase 2\016\2119\1314B-1\NApprSlab1.dgn