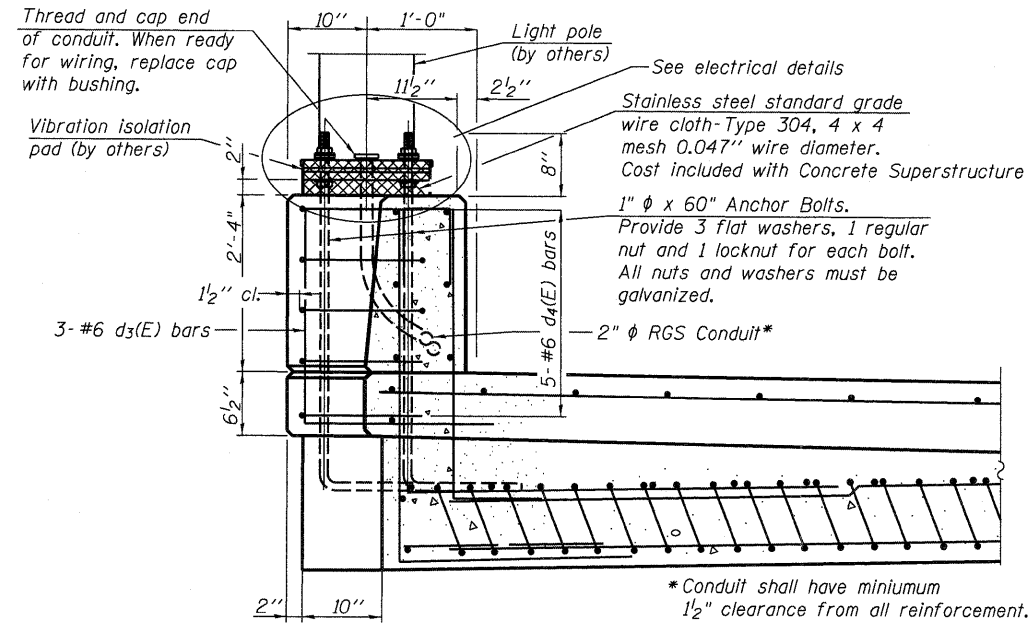
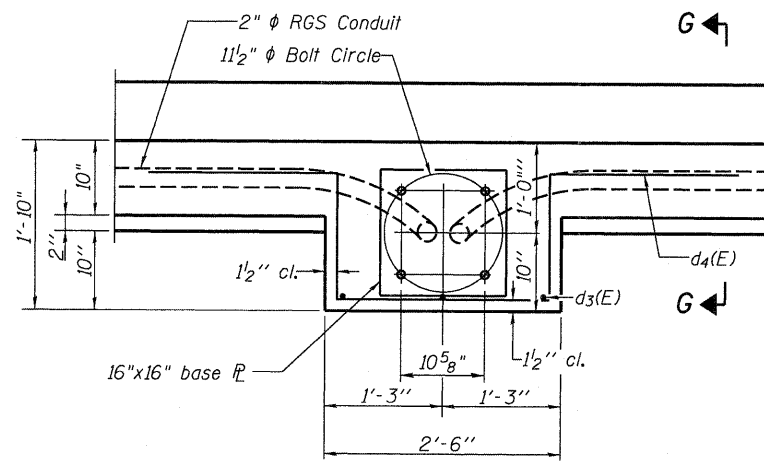


STATE OF ILLINOIS
DEPARTMENT OF TRANSPORTATION

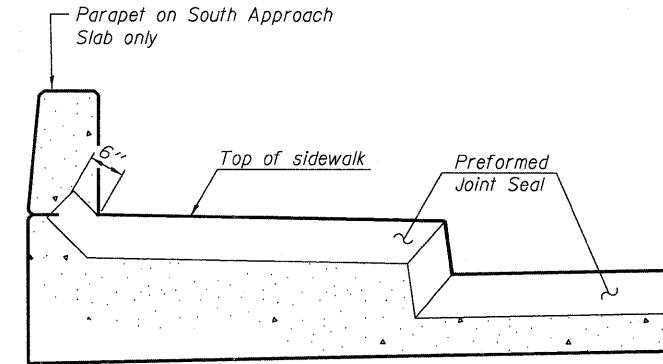


SECTION G-G

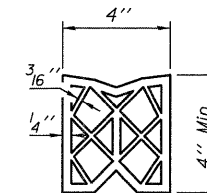


DETAIL 1
2 location

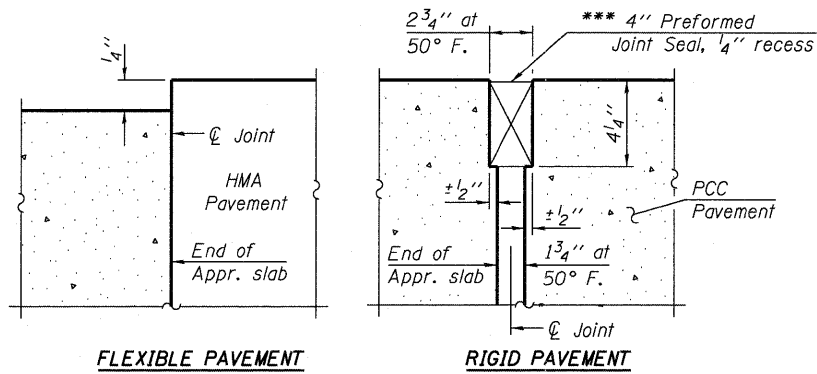
Note:
Cost of anchor rods and conduit is included with Concrete Superstructure.



VIEW F-F
Angle Preformed Joint Seal at 45°



PREFORMED JOINT SEAL



DETAIL A

*** Cost included with Concrete Superstructure.

Notes:

1. Work this sheet with sheets S15 thru S18.
2. For location of Detail 1 and View F-F see sheets S15 and S17.
3. For location of Detail A see sheets S16 and S18.
4. For electrical conduits plan location, see sheets E2 and E3.
5. For electrical conduits details, see sheet E8.

| | |
|----------|-----|
| DESIGNED | EV |
| CHECKED | PC |
| DRAWN | JCP |
| CHECKED | JPO |

APPROACH SLAB DETAILS
STRUCTURE NO. 016-2119

| | | | | | | |
|--|---------------------------------|--------------------|--------------------|----------------|---------------------|-----------------|
| 600 WEST FULTON STREET CHICAGO, ILLINOIS 60661-1258 TEL 312 454 9100 FAX 312 559 1217 WEB www.epsteinglobal.com | SHEET NO. S19 S52 SHEETS | F.A.I. RTE. 94 | SECTION 1314B-1 | COUNTY COOK | TOTAL SHEETS 110 | SHEET NO. 55 |
| | | CONTRACT NO. 60F65 | | | | |