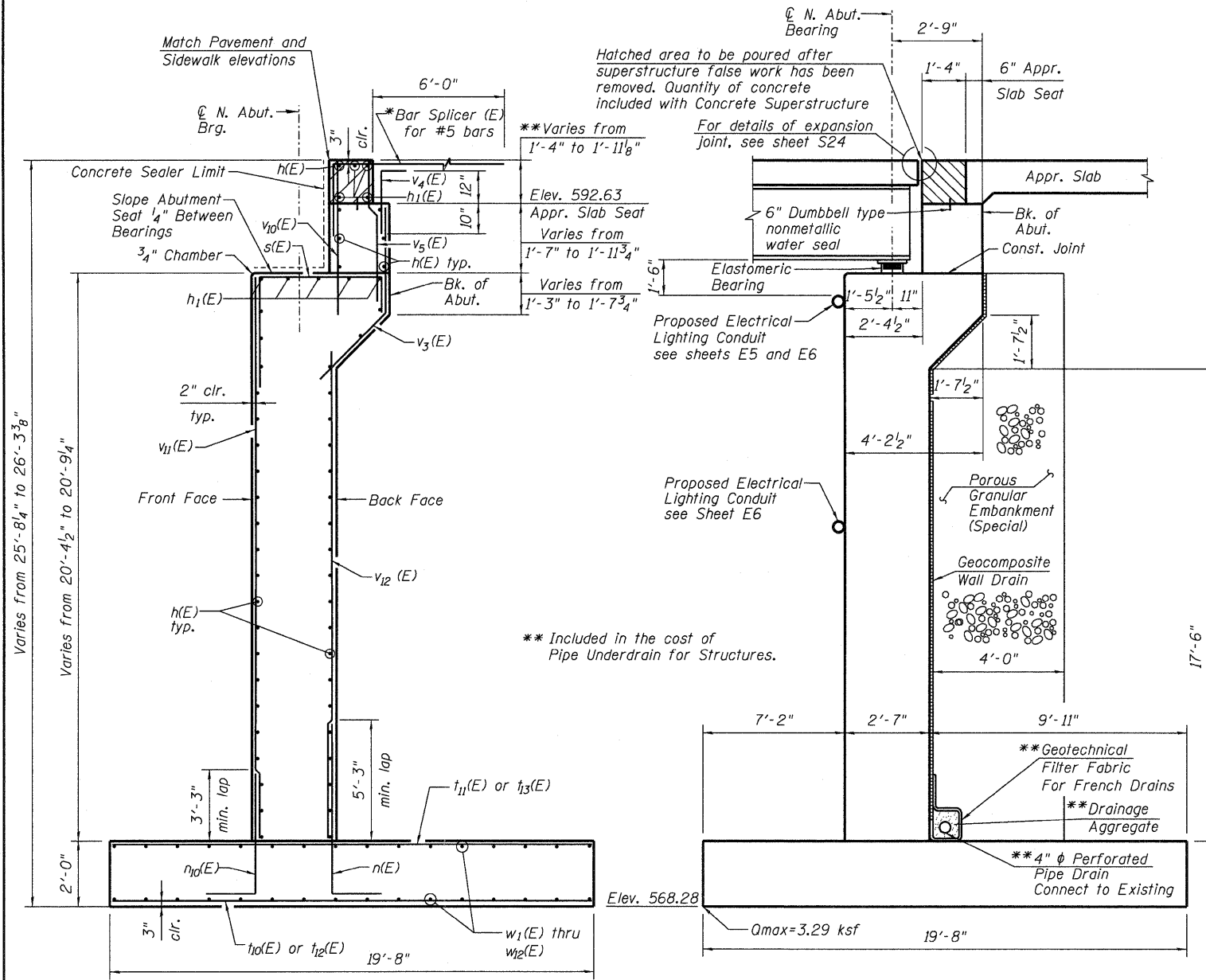
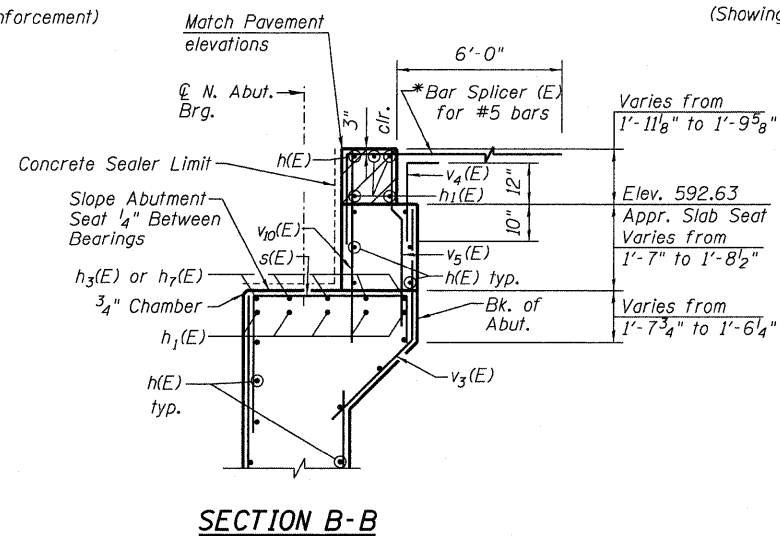


STATE OF ILLINOIS
DEPARTMENT OF TRANSPORTATION

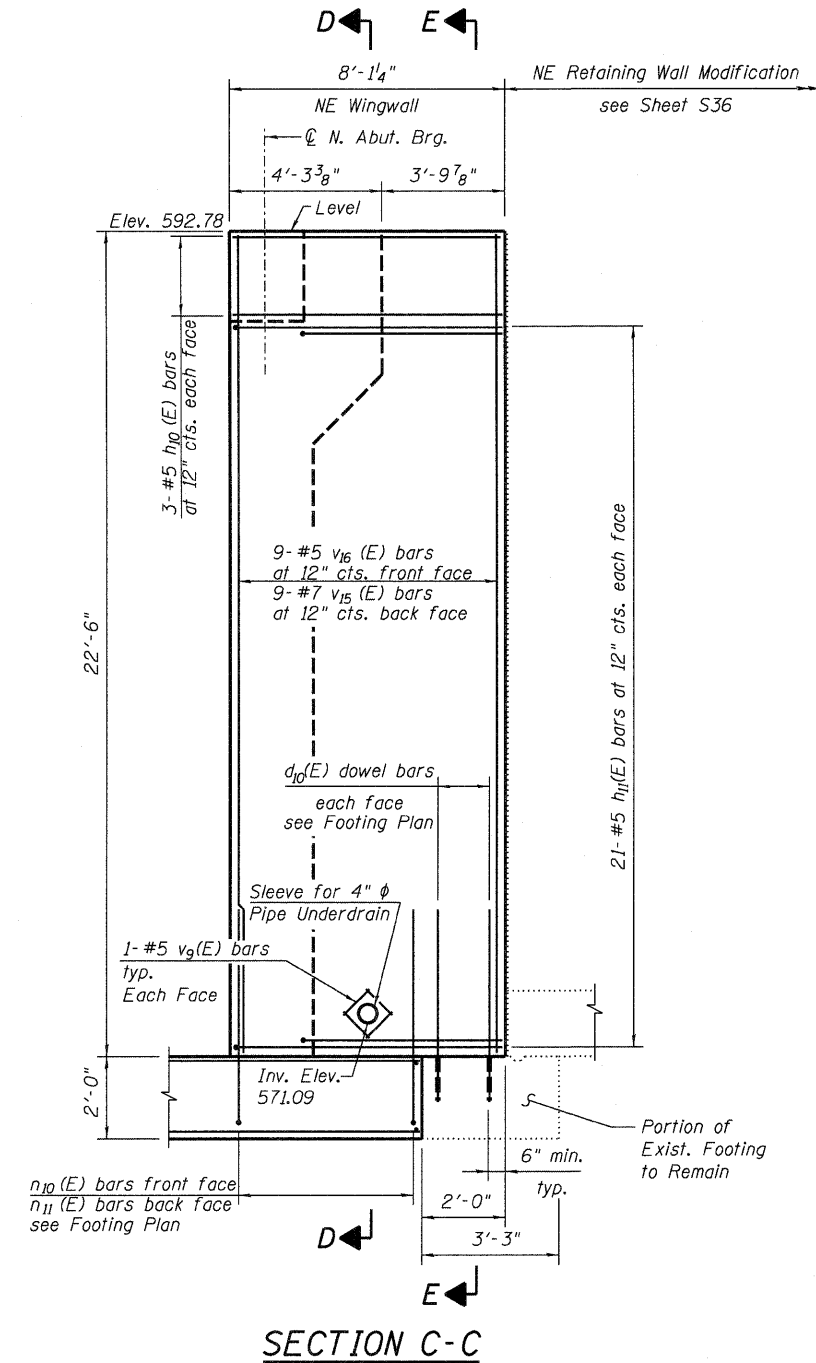


SECTION A-A
(Showing Reinforcement)

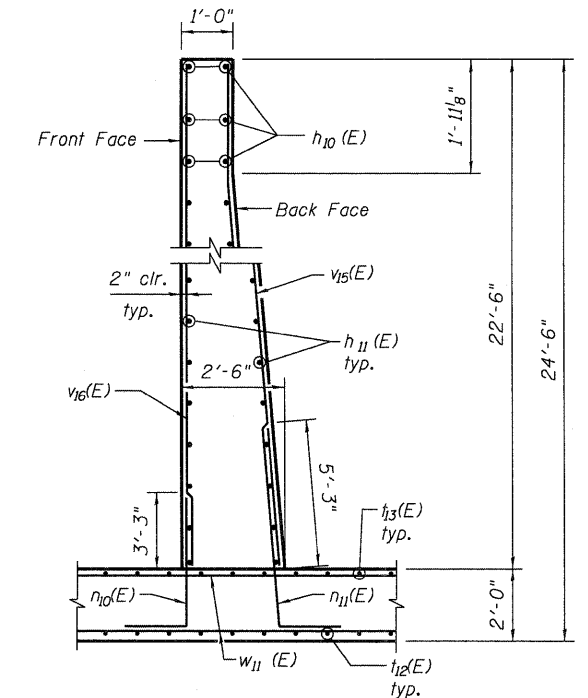
SECTION A-A
(Showing Details)



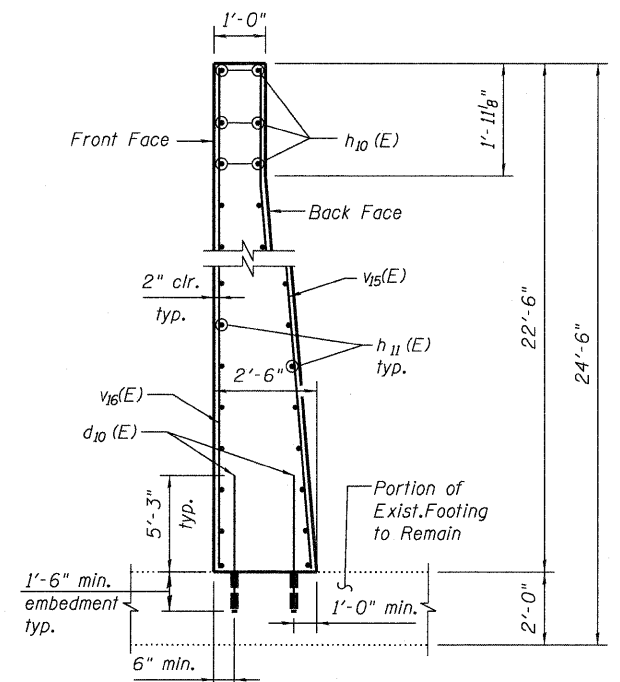
SECTION B-B



SECTION C-C



SECTION D-D



SECTION E-E

- Notes:
- * Alternate with $v_3(E)$ and $v_{10}(E)$ bars
 - ** Additional height required at sidewalk (see sheet S33)

1. For location of Sections A-A thru C-C, see sheet S33.
2. For Bill of Material, see sheet S36.
3. For section thru wingwall, see section thru retaining wall on sheet S31.
4. For Pipe Underdrain for Structures Detail see sheet S28.

DESIGNED	EV
CHECKED	PC
DRAWN	JCP
CHECKED	JPO

SEPSTEIN
600 WEST FULTON STREET
CHICAGO, ILLINOIS
60661-1259
TEL 312 454 9100
FAX 312 559 1217
WEB www.epsteinglobal.com

SHEET NO. S35
S52 SHEETS

F.A.I. RTE.	SECTION	COUNTY	TOTAL SHEETS	SHEET NO.
94	1314B-1	COOK	110	71
CONTRACT NO. 60F65				
ILLINOIS FED. AID PROJECT				

**NORTH ABUTMENT
DETAILS 1
STRUCTURE NO. 016-2119**

8/12/2010 4:01:12 PM P:\Projects\2000020225 - DOT FTB 152\CAD\CADD Sheets\Bridges\Phase 2\0161243-035-NorthAbutDetails.dgn