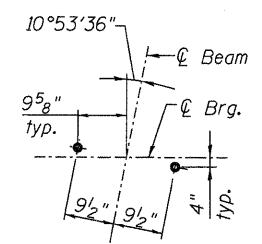
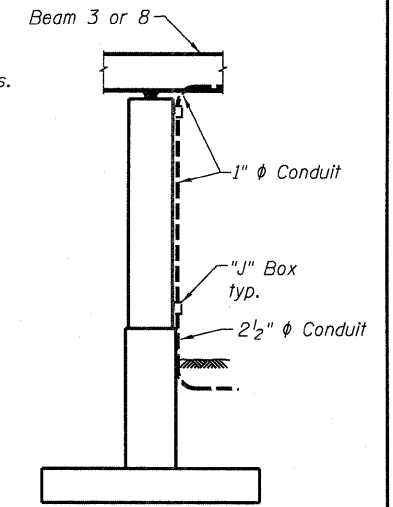


STATE OF ILLINOIS
DEPARTMENT OF TRANSPORTATION

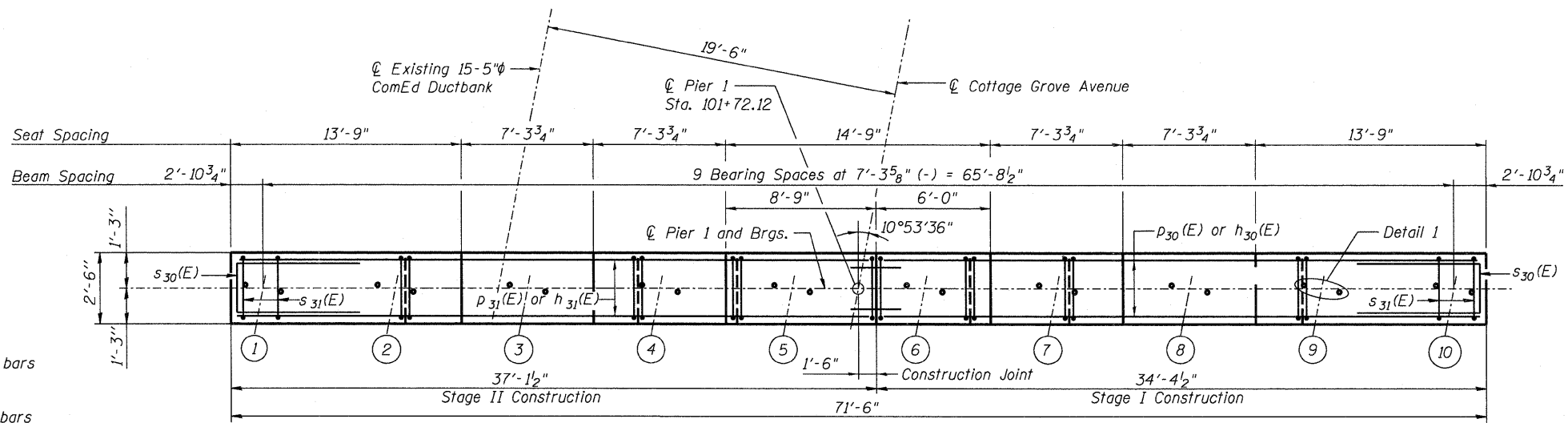
Notes:
Space reinforcement in cap to miss anchor bolts.
Pour steps monolithically with cap.



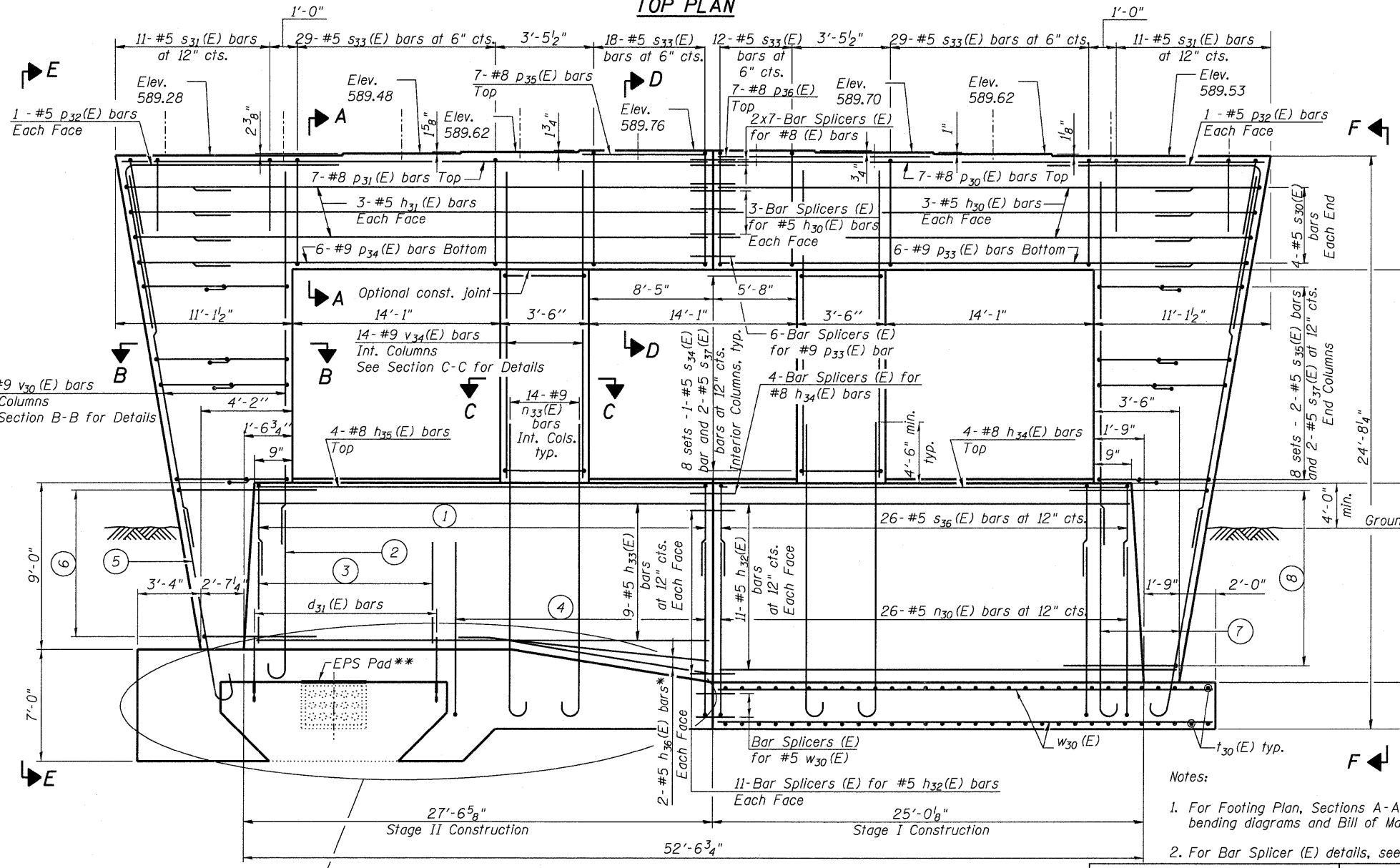
DETAIL 1

CONDUIT LOCATION
(Looking West)
Place Conduits and "J" boxes at North face of Pier 1 see IDOT Standard BE900

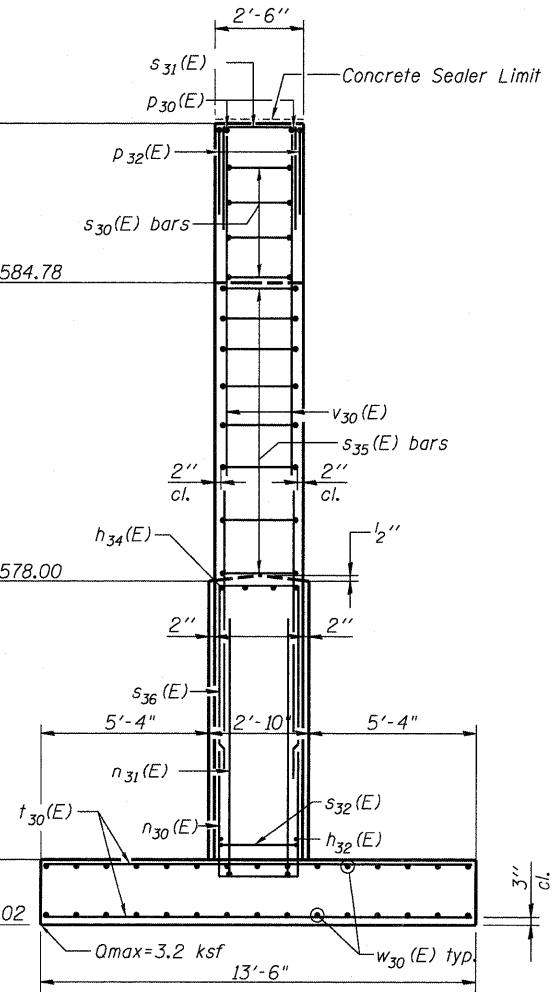
- 1 28-#5 s₃₀(E) bars at 12" cts.
- 2 12-#8 n₃₂(E) bars See Footing Plan
- 3 14-#5 v₃₂(E) bars at 12" cts. Each Face
- 4 15-#5 n₃₀(E) bars at 12" cts.
- 5 6-#8 n₃₁(E) bars See Footing Plan
- 6 10-#5 s₃₂(E) bars at 12" cts.
- 7 18-#8 n₃₁(E) bars See Footing Plan
- 8 12-#5 s₃₂(E) bars at 12" cts.



TOP PLAN



ELEVATION
(Looking North)



VIEW F-F
PIER 1
STRUCTURE NO. 016-2119

- Notes:
- For Footing Plan, Sections A-A thru D-D, View E-E, bar bending diagrams and Bill of Materials, see sheet S41.
 - For Bar Splicer (E) details, see sheet S39.

DESIGNED	EV
CHECKED	PC
DRAWN	JCP
CHECKED	JPO

See Pier Stage II Footing Details Sheet S42

*Bend in the field as required.
** 2" High Strength EPS Pad (see sheet S42 for details)

SEPSTEIN
600 WEST FULTON STREET
CHICAGO, ILLINOIS
80661-1259
TEL 312 454 9100
FAX 312 559 1217
WEB www.epsteinglobal.com

SHEET NO. S38	F.A.I. RTE. 94	SECTION 1314B-1	COUNTY COOK	TOTAL SHEETS 110	SHEET NO. 74
S52 SHEETS		CONTRACT NO. 60F65		ILLINOIS FED. AID PROJECT	

8/9/2010 7:53:31 PM P:\Projects\20090000000000000000 - IDOT\PTB\152\CADD\Sheet\Bldg\Phase 20161243-038-Pier1.dgn