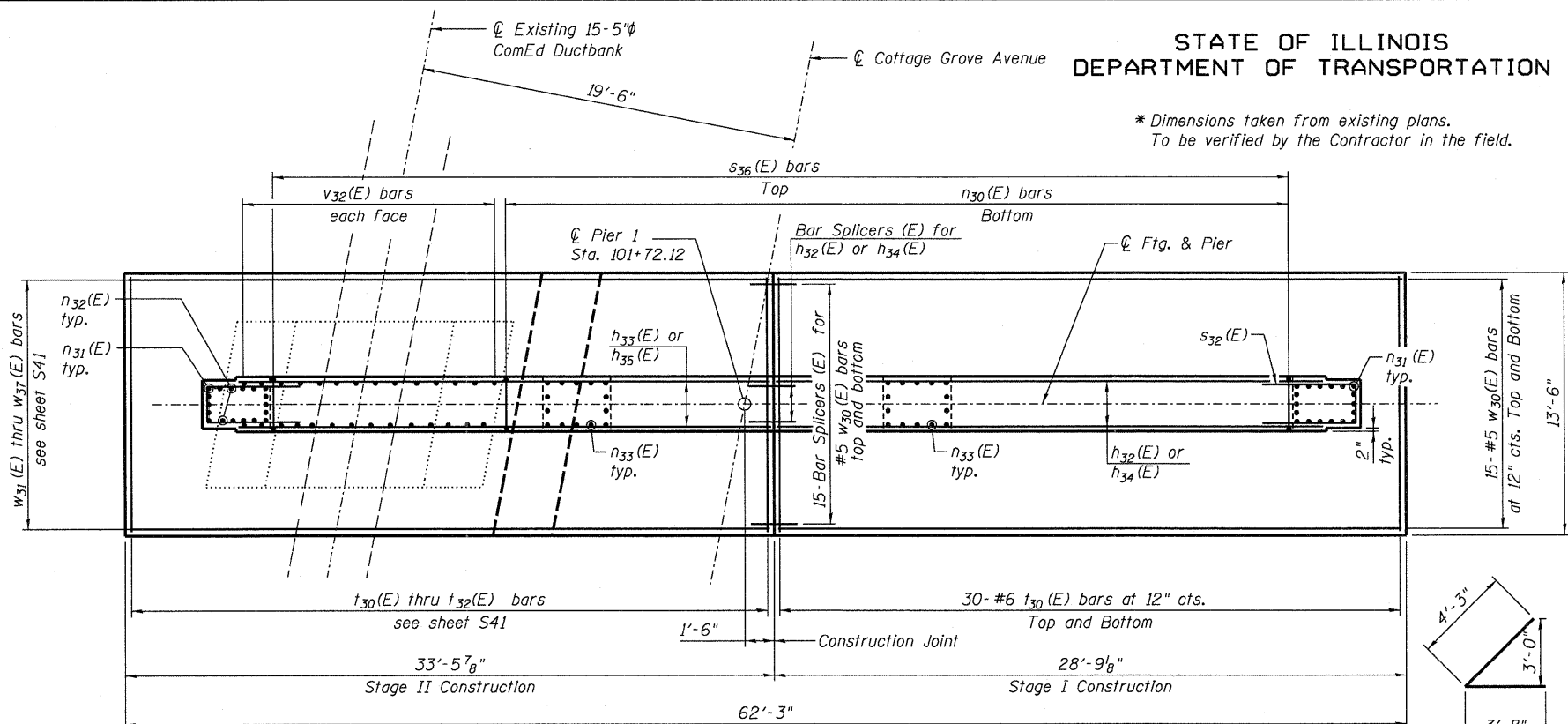
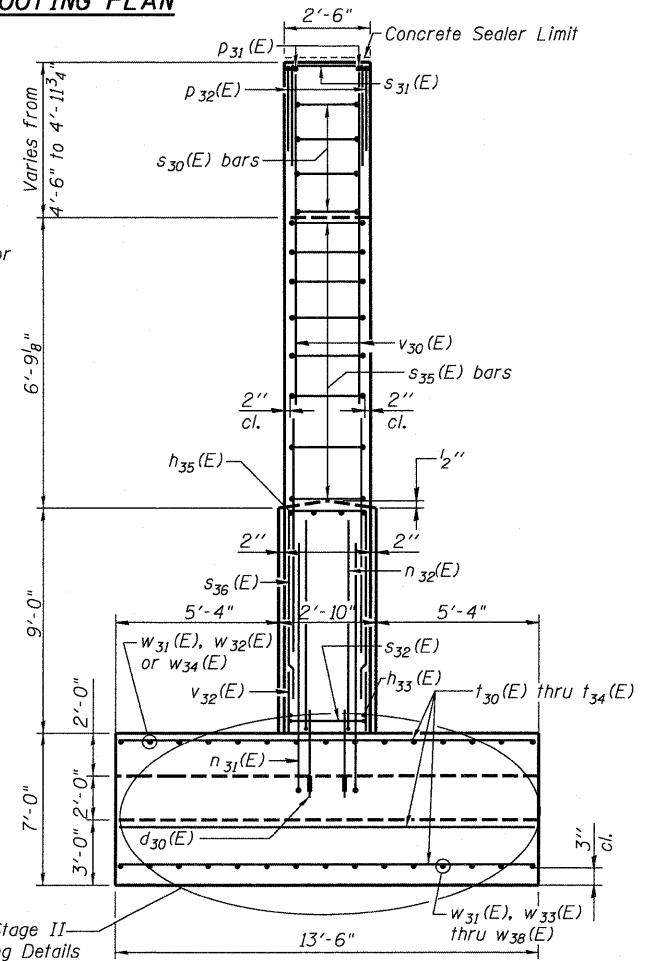
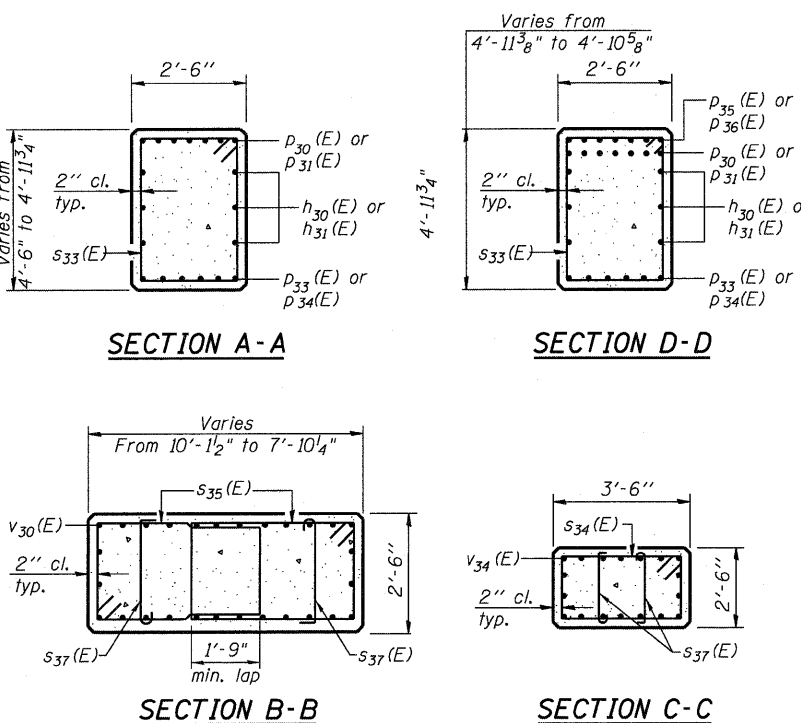


STATE OF ILLINOIS
DEPARTMENT OF TRANSPORTATION

* Dimensions taken from existing plans.
To be verified by the Contractor in the field.



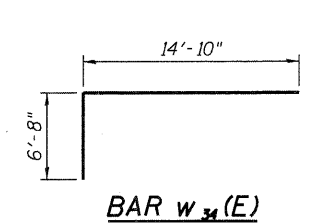
FOOTING PLAN



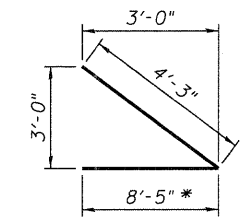
VIEW E-E

DESIGNED	EV
CHECKED	PC
DRAWN	JCP
CHECKED	JPO

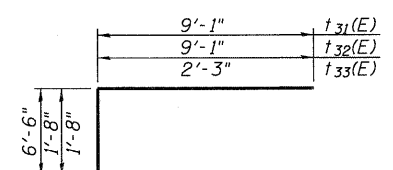
See Stage II Footing Details Sheet S42



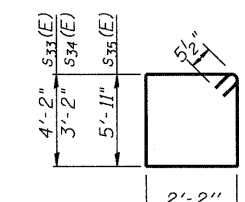
BAR w₃₄(E)



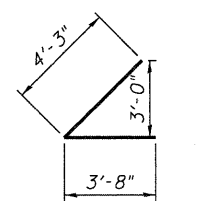
BAR w₃₇(E)



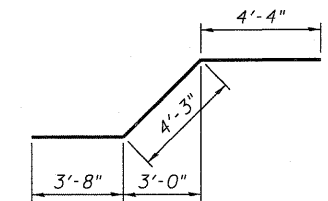
BARS t₃₁(E), t₃₂(E) & t₃₃(E)



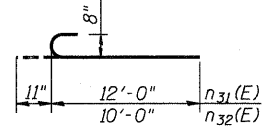
BARS s₃₃(E), s₃₄(E) & s₃₅(E)



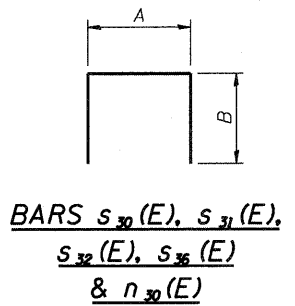
BAR w₃₈(E)



BAR w₃₅(E)



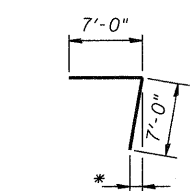
BARS n₃₁(E) and n₃₂(E)



BARS s₃₀(E), s₃₁(E), s₃₂(E), s₃₅(E) & n₃₀(E)

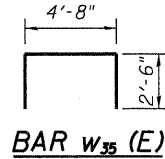
A & B DIMENSIONS

Bar	A	B
s ₃₀ (E)	2'-2"	3'-6"
s ₃₁ (E)	2'-2"	3'-2"
s ₃₂ (E)	2'-2"	7'-6"
s ₃₅ (E)	2'-6"	2'-2"
n ₃₀ (E)	2'-6"	12'-0"

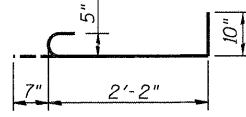


BAR p₃₂(E)

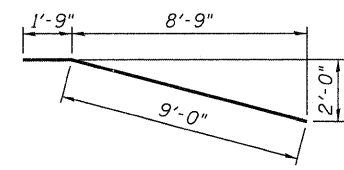
* Bend as needed in the field



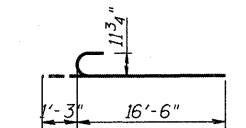
BAR w₃₅(E)



BARS s₃₇(E)



BAR w₃₂(E)



BARS n₃₁(E)

Notes:

1. For location of Sections A-A thru D-D and View E-E, see sheet S38.

BILL OF MATERIAL

Bar	No.	Size	Length	Shape
d ₃₀ (E)	172	#7	3' - 6"	
d ₃₁ (E)	20	#7	8' - 3"	
h ₃₀ (E)	6	#5	32' - 11"	
h ₃₁ (E)	6	#5	35' - 8"	
h ₃₂ (E)	22	#5	23' - 8"	
h ₃₃ (E)	18	#5	26' - 5"	
h ₃₄ (E)	4	#8	23' - 8"	
h ₃₅ (E)	4	#8	26' - 5"	
h ₃₆ (E)	4	#5	11' - 0"	
n ₃₀ (E)	41	#5	26' - 6"	
n ₃₁ (E)	24	#8	12' - 11"	
n ₃₂ (E)	12	#8	10' - 11"	
n ₃₃ (E)	28	#9	17' - 9"	
p ₃₀ (E)	7	#8	34' - 1"	
p ₃₁ (E)	7	#8	36' - 10"	
p ₃₂ (E)	4	#5	14' - 0"	
p ₃₃ (E)	6	#9	32' - 7"	
p ₃₄ (E)	6	#9	35' - 3"	
p ₃₅ (E)	7	#8	8' - 6"	
p ₃₆ (E)	7	#8	12' - 11"	
s ₃₀ (E)	8	#5	9' - 2"	
s ₃₁ (E)	22	#5	8' - 6"	
s ₃₂ (E)	22	#5	17' - 2"	
s ₃₃ (E)	88	#5	13' - 7"	
s ₃₄ (E)	16	#5	11' - 7"	
s ₃₅ (E)	32	#5	17' - 1"	
s ₃₆ (E)	54	#5	6' - 10"	
s ₃₇ (E)	64	#5	3' - 7"	
t ₃₀ (E)	95	#6	13' - 2"	
t ₃₁ (E)	45	#6	15' - 7"	
t ₃₂ (E)	10	#6	10' - 9"	
t ₃₃ (E)	18	#6	3' - 11"	
t ₃₄ (E)	62	#6	9' - 1"	
v ₃₀ (E)	56	#9	20' - 6"	
v ₃₂ (E)	28	#5	10' - 4"	
v ₃₃ (E)	30	#5	6' - 0"	
v ₃₄ (E)	28	#9	10' - 11"	
w ₃₀ (E)	30	#5	28' - 5"	
w ₃₁ (E)	30	#5	11' - 5"	
w ₃₂ (E)	15	#5	10' - 9"	
w ₃₃ (E)	6	#5	11' - 10"	
w ₃₄ (E)	15	#5	21' - 6"	
w ₃₅ (E)	12	#5	9' - 8"	
w ₃₆ (E)	15	#5	12' - 3"	
w ₃₇ (E)	9	#5	12' - 8"	
w ₃₈ (E)	9	#5	7' - 11"	
Structure Excavation	Cu. Yd.		468	
Concrete Structures	Cu. Yd.		213.8	
Reinforcement Bars, Epoxy Coated	Pound		25,900	
Bar Splicers (E)	Each		82	
Concrete Sealer	Sq. Ft.		179	

PIER 1 DETAILS
STRUCTURE NO. 016-2119

 600 WEST FULTON STREET CHICAGO, ILLINOIS 60661-1259 TEL 312 454 9100 FAX 312 559 1217 WEB www.epsteinglobal.com	SHEET NO. S39	F.A.I. RTE. 94	SECTION 1314B-1	COUNTY COOK	TOTAL SHEETS 110	SHEET NO. 75
	S52 SHEETS	CONTRACT NO. 60F65		ILLINOIS FED. AID PROJECT		