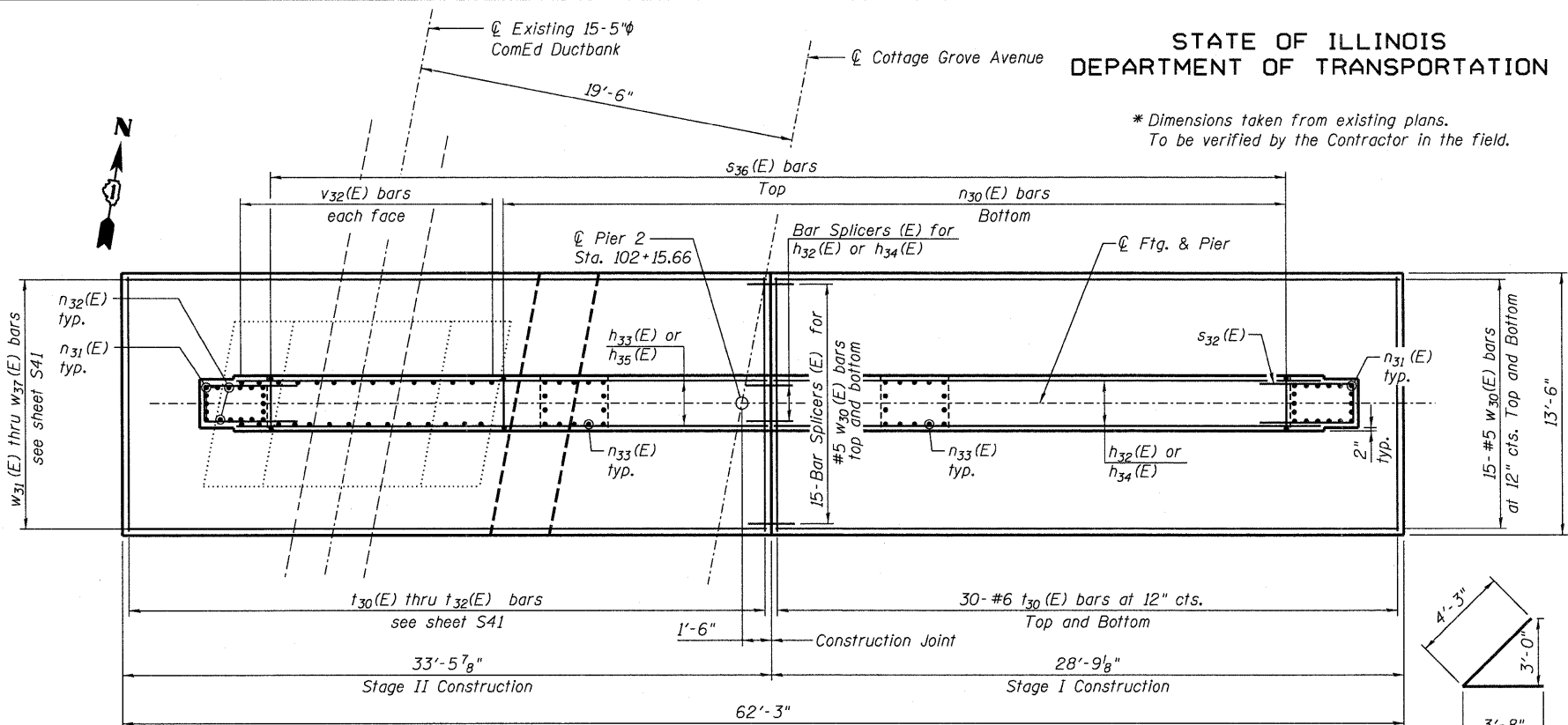
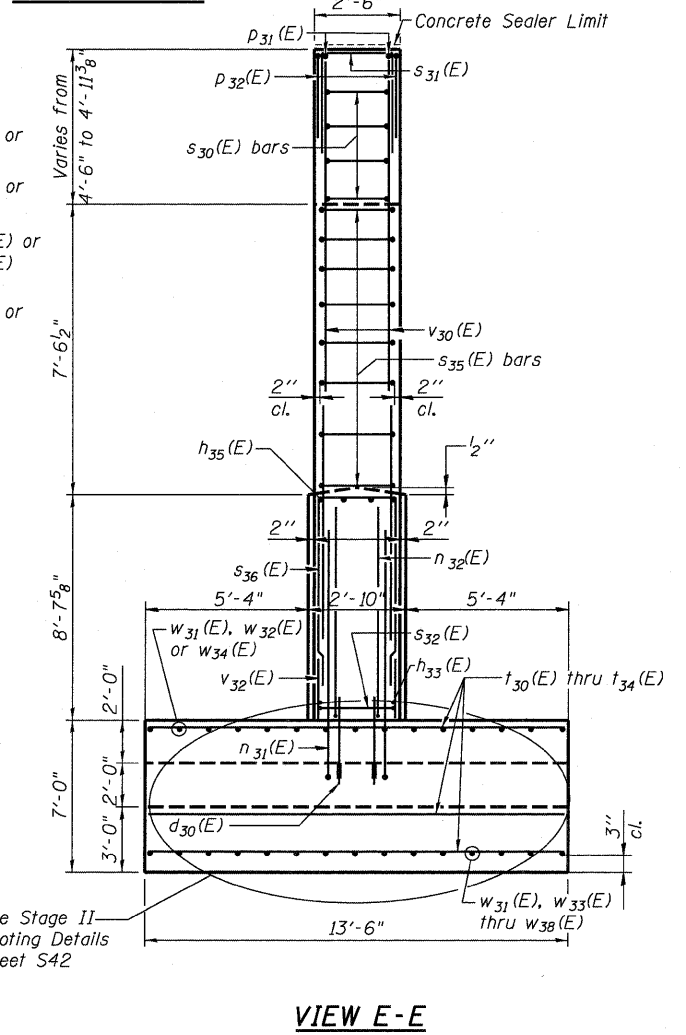
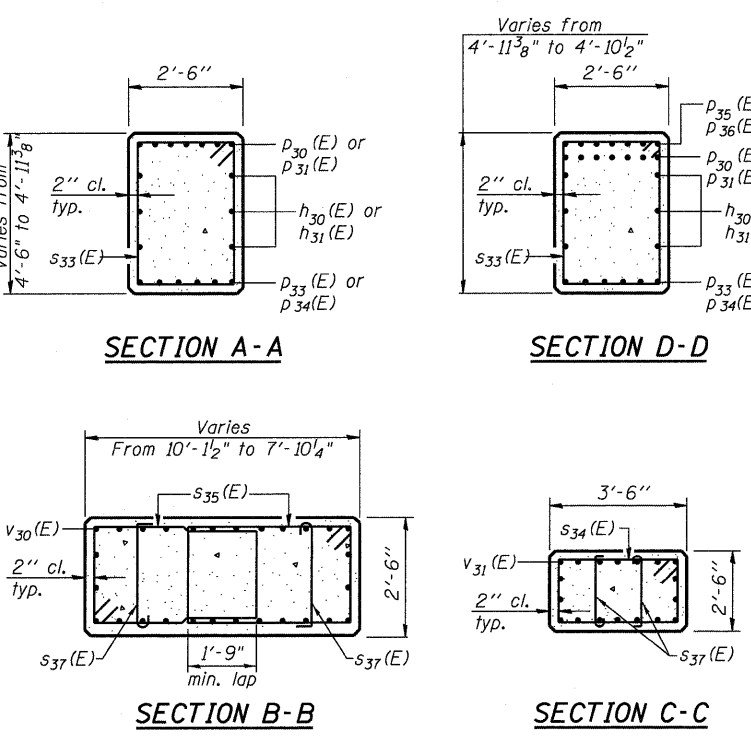


STATE OF ILLINOIS
DEPARTMENT OF TRANSPORTATION

* Dimensions taken from existing plans.
To be verified by the Contractor in the field.



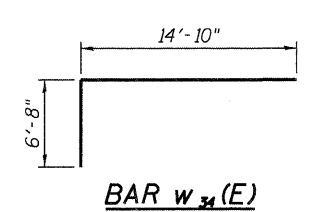
FOOTING PLAN



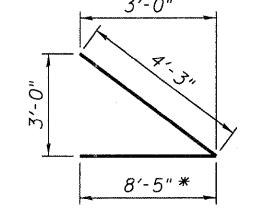
VIEW E-E

DESIGNED	EV
CHECKED	PC
DRAWN	JCP
CHECKED	JPO

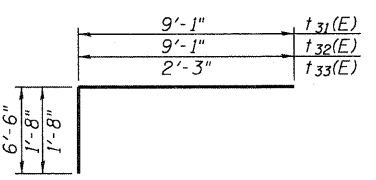
See Stage II Footing Details Sheet S42



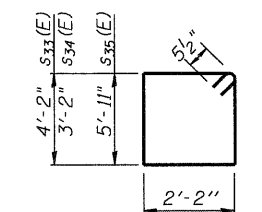
BAR w34(E)



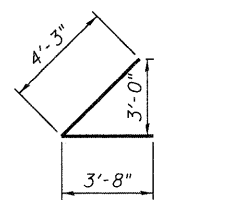
BAR w37(E)



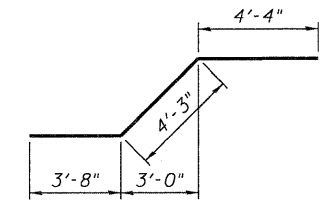
BARS t31(E), t32(E) & t33(E)



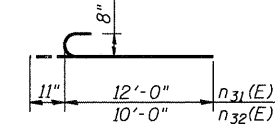
BARS s33(E), s34(E) & s35(E)



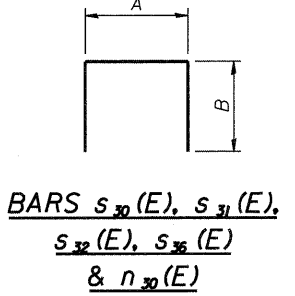
BAR w38(E)



BAR w36(E)



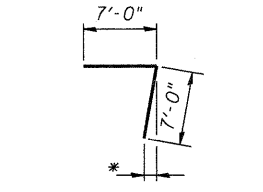
BARS n31(E) and n32(E)



BARS s30(E), s31(E), s32(E), s35(E) & n30(E)

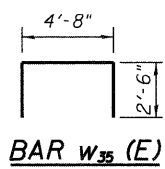
A & B DIMENSIONS

Bar	A	B
s30(E)	2'-2"	3'-6"
s31(E)	2'-2"	3'-2"
s32(E)	2'-2"	7'-6"
s35(E)	2'-6"	2'-2"
n30(E)	2'-6"	12'-0"

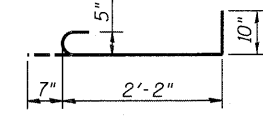


BAR p32(E)

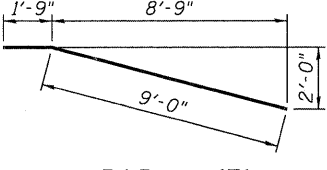
* Bend as needed in the field



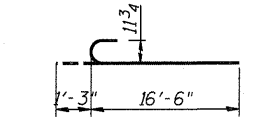
BAR w35(E)



BARS s37(E)



BAR w32(E)



BARS n33(E)

BILL OF MATERIAL

Bar	No.	Size	Length	Shape
d30(E)	172	#7	3' - 6"	
d31(E)	20	#7	8' - 3"	
h30(E)	6	#5	32' - 11"	
h31(E)	6	#5	35' - 8"	
h32(E)	22	#5	23' - 8"	
h33(E)	18	#5	26' - 5"	
h34(E)	4	#8	23' - 8"	
h35(E)	4	#8	26' - 5"	
h36(E)	4	#5	11' - 0"	
h30(E)	41	#5	26' - 6"	
h31(E)	24	#8	12' - 11"	
h32(E)	12	#8	10' - 11"	
h33(E)	28	#9	17' - 9"	
h30(E)	7	#8	34' - 1"	
h31(E)	7	#8	36' - 10"	
h32(E)	4	#5	14' - 0"	
h33(E)	6	#9	32' - 7"	
h34(E)	6	#9	35' - 3"	
h35(E)	7	#8	8' - 6"	
h36(E)	7	#8	12' - 11"	
s30(E)	8	#5	9' - 2"	
s31(E)	22	#5	8' - 6"	
s32(E)	22	#5	17' - 2"	
s33(E)	88	#5	13' - 7"	
s34(E)	16	#5	11' - 7"	
s35(E)	32	#5	17' - 1"	
s36(E)	54	#5	6' - 10"	
s37(E)	64	#5	3' - 7"	
t30(E)	95	#6	13' - 2"	
t31(E)	45	#6	15' - 7"	
t32(E)	10	#6	10' - 9"	
t33(E)	18	#6	3' - 11"	
t34(E)	62	#6	9' - 1"	
v30(E)	56	#9	20' - 6"	
v31(E)	28	#9	11' - 6"	
v32(E)	28	#5	10' - 4"	
v33(E)	30	#5	6' - 0"	
w30(E)	30	#5	28' - 5"	
w31(E)	30	#5	11' - 5"	
w32(E)	15	#5	10' - 9"	
w33(E)	6	#5	11' - 10"	
w34(E)	15	#5	21' - 6"	
w35(E)	12	#5	9' - 8"	
w36(E)	15	#5	12' - 3"	
w37(E)	9	#5	12' - 8"	
w38(E)	9	#5	7' - 11"	
Structure Excavation		Cu. Yd.	461	
Concrete Structures		Cu. Yd.	214.2	
Reinforcement Bars, Epoxy Coated		Pound	25,950	
Bar Splicers (E)		Each	82	
Concrete Sealer		Sq. Ft.	179	

PIER 2 DETAILS
STRUCTURE NO. 016-2119

Notes:

1. For location of Sections A-A thru D-D and View E-E, see sheet S40.

STEPSTEIN
600 WEST FULTON STREET
CHICAGO, ILLINOIS
60661-1259
TEL 312 454 9100
FAX 312 559 1217
WEB www.stepsteinglobal.com

SHEET NO. S41
S52 SHEETS

F.A.I. RTE.	SECTION	COUNTY	TOTAL SHEETS	SHEET NO.
94	1314B-1	COOK	110	77
CONTRACT NO. 60F65			ILLINOIS FED. AID PROJECT	

8/12/2010 3:51:34 PM P:\projects\2010000\20225 - IDOT FTB 152\CAD\CADD Sheets\Bridges Phase 2\0161243-041-Pier2\Details.dgn