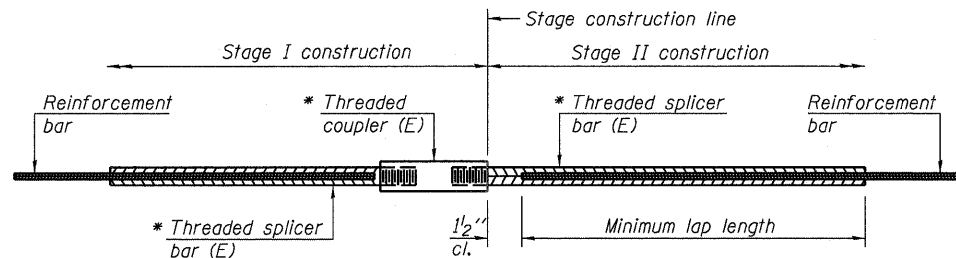


STATE OF ILLINOIS
DEPARTMENT OF TRANSPORTATION



STANDARD BAR SPLICER ASSEMBLY

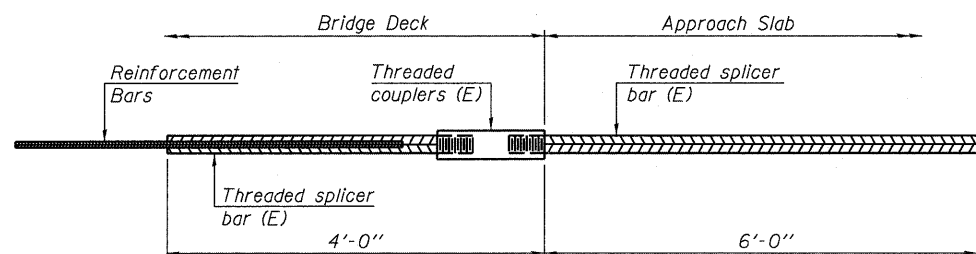
Bar size to be spliced	Minimum Lap Lengths			
	Table 1	Table 2	Table 3	Table 4
3, 4	1'-5"	1'-11"	2'-1"	2'-4"
5	1'-9"	2'-5"	2'-7"	2'-11"
6	2'-1"	2'-11"	3'-1"	3'-6"
7	2'-9"	3'-10"	4'-2"	4'-8"
8	3'-8"	5'-1"	5'-5"	6'-2"
9	4'-7"	6'-5"	6'-10"	7'-9"

Table 1: Black bar, 0.8 Class C
Table 2: Black bar, Top bar lap, 0.8 Class C
Table 3: Epoxy bar, 0.8 Class C
Table 4: Epoxy bar, Top bar lap, 0.8 Class C

Threaded splicer bar length = min. lap length + 1/2" + thread length

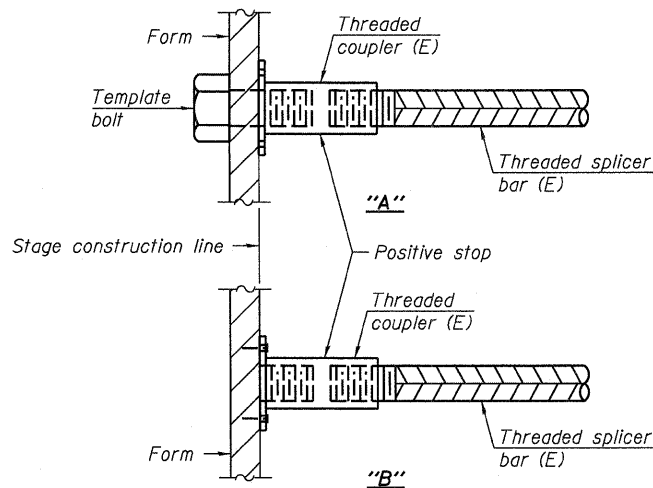
* Epoxy not required on Bar Splicer Assembly components used in conjunction with black bars.

Location	Bar size	No. assemblies required	Table for minimum lap length
Top of Slab	#5	323	4
Bottom of Slab	#5	218	3
Top of S. Appr. Slab	#4	25	4
Bottom of S. Appr. Slab	#5	46	3
S. Appr. Slab Footing	#5	42	3
Top of N. Appr. Slab	#4	26	4
Bottom of N. Appr. Slab	#5	47	3
N. Appr. Slab Footing	#5	42	3
S. Abut.	#5	45	3
S. Abut.	#6	14	4
N. Abut.	#5	85	3
N. Abut.	#6	14	4
Pier 1	#9	6	3
Pier 1	#8	18	4
Pier 1	#5	58	3
Pier 2	#9	6	3
Pier 2	#8	18	4
Pier 2	#5	58	3



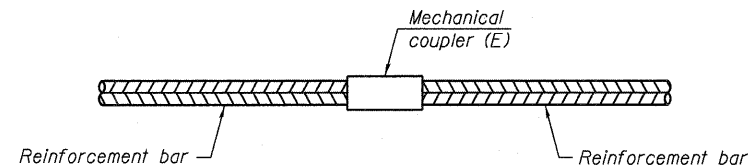
BAR SPLICER ASSEMBLY FOR #5 BAR ON INTEGRAL OR SEMI-INTEGRAL ABUTMENTS

No. required =



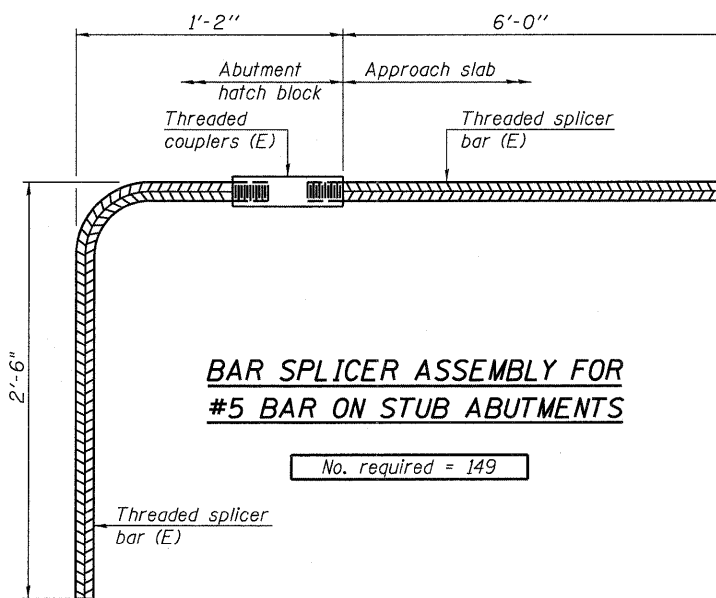
INSTALLATION AND SETTING METHODS

"A": Set bar splicer assembly by means of a template bolt.
"B": Set bar splicer assembly by nailing to wood forms or cementing to steel forms.
(E) : Indicates epoxy coating.



STANDARD MECHANICAL SPLICER

Location	Bar size	No. assemblies required



BAR SPLICER ASSEMBLY FOR #5 BAR ON STUB ABUTMENTS

No. required = 149

NOTES

Splicer bars shall be deformed with threaded ends and have a minimum 60 ksi yield strength.
All reinforcement shall be lapped and tied to the splicer bars.
Bar splicer assemblies shall be epoxy coated according to the requirements for reinforcement bars. See Section 508 of the Standard Specifications.
See special provision for Mechanical Splicers.
See approved list of bar splicer assemblies and mechanical splicers for alternatives.

**BAR SPLICER DETAILS
STRUCTURE NO. 016-2119**

DESIGNED EV
CHECKED PC
DRAWN JCP
CHECKED JPO

BSD-1

11-1-09

 600 WEST FULTON STREET CHICAGO, ILLINOIS 60661-1259 TEL 312 454 9100 FAX 312 559 1217 WEB www.epsteinglobal.com	SHEET NO. S45 S52 SHEETS	F.A.I. RTE. 94	SECTION 1314B-1	COUNTY COOK	TOTAL SHEETS 110	SHEET NO. 81
		CONTRACT NO. 60F65 ILLINOIS FED. AID PROJECT				

8/9/2010 7:55:47 PM P:\Projects\200900029225 - IDOT P1B 152\CAD\CADD Sheets\Bridge Phase 2\016\016-045-SplicerDetails.dgn