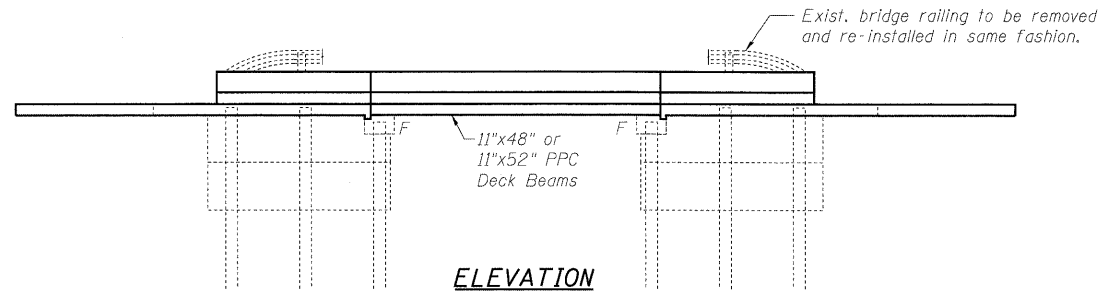


STATE OF ILLINOIS
DEPARTMENT OF TRANSPORTATION

Benchmark : Benchmark #1 - cut "□" in south end of west bridge curb.
Assumed elevation = 100.00'

Existing Structure: S.N. 049-0152 built in 1921 and completely replaced in 1977 as a single span 11"x52" PPC Deck Beam bridge with 2" bituminous wearing surface on closed abutments consisting of a concrete cap on concrete piles with concrete planks. The bridge was widened in 1990 using 11"x48" PPC Deck Beams. The structure measures 25'-6" back to back abutments and 67'-4" out to out. Traffic is to be maintained utilizing stage construction. One lane for each direction is to be provided.

Salvage: Steel Bridge Railing



STATION 100+00.00
REBUILT 20_ _ BY
STATE OF ILLINOIS
F.A.P. ROUTE 338 SEC 108 B-1
LOADING HL-93
STRUCTURE NO. 049-0152

NAME PLATE
See Std. 515001

NOTE:
Existing Name Plate shall be cleaned and relocated next to new Name Plate.
Cost included with Name Plates.

LOADING HL-93
Allow 50 psf for future wearing surface

DESIGN SPECIFICATIONS
2007 AASHTO LRFD 4th Edition

DESIGN STRESSES

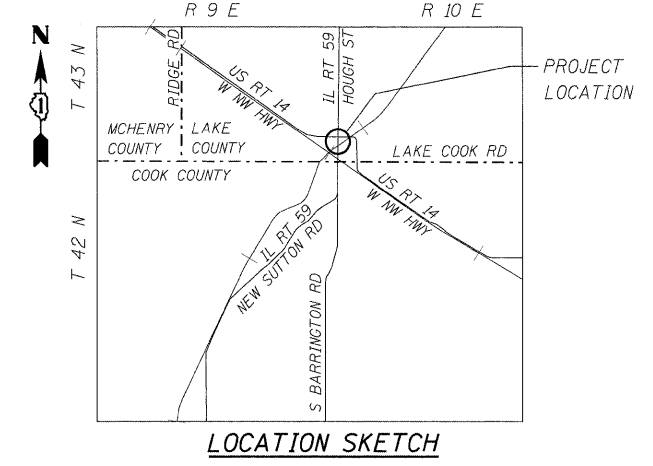
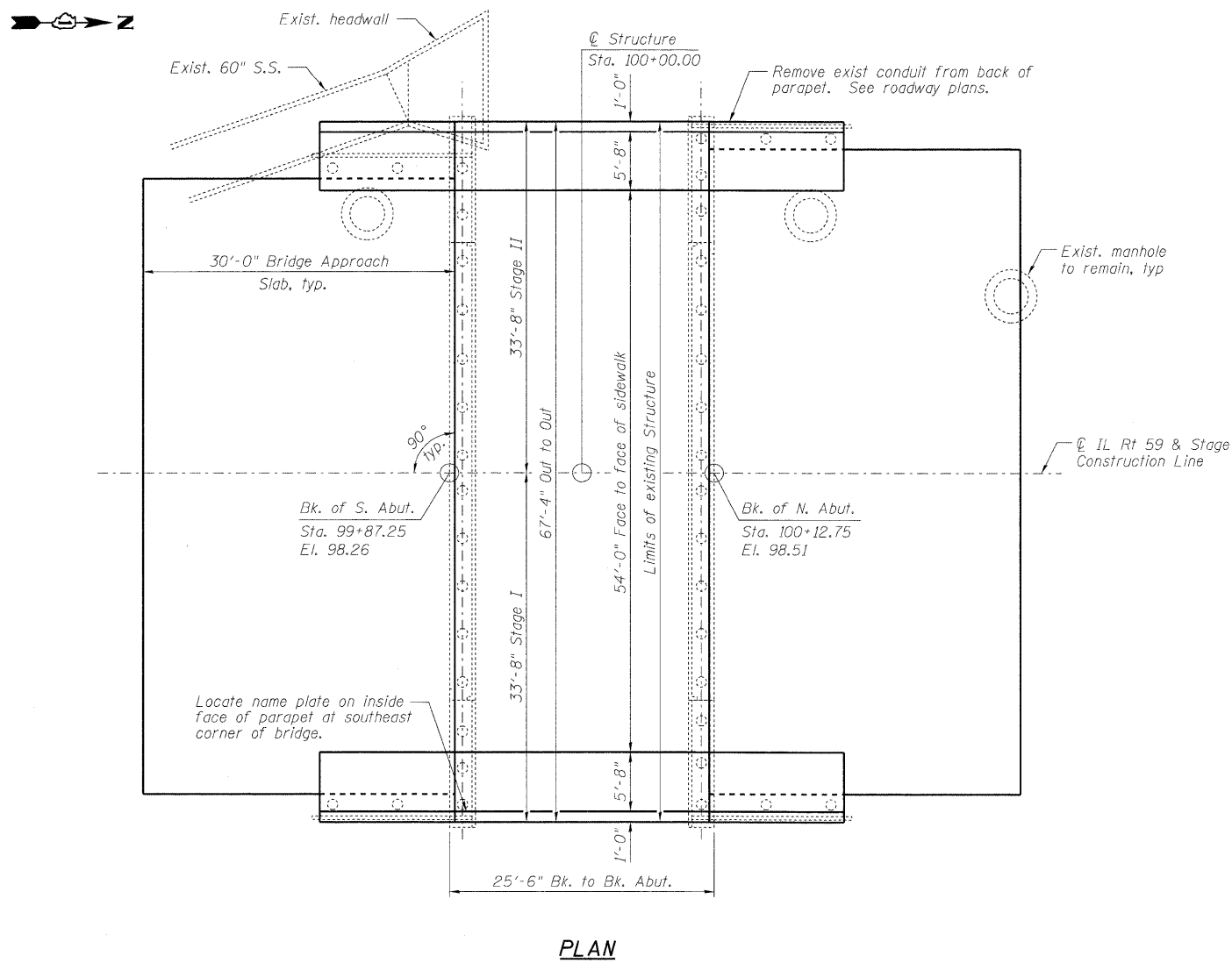
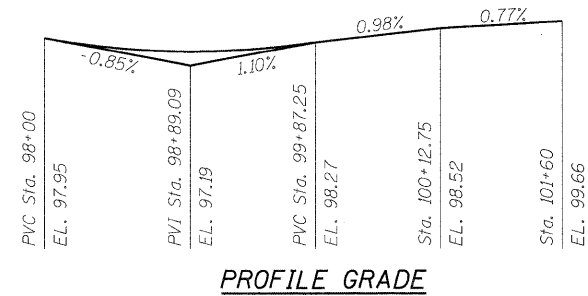
FIELD UNITS
f'c = 3,500 psi
f'c = 5000 psi (Concrete Wearing Surface)
fy = 60000 psi (Reinforcement)

PRECAST PRESTRESSED UNITS

f'c = 6000 psi
f'ct = 5000 psi
f's = 270,000 psi (1/2" ϕ low lax. strands)
f'si = 201,900 psi (1/2" ϕ low lax. strands)

SEISMIC DATA

Seismic Performance Category (SPC) = A
Bedrock acceleration coefficient (A) = .04
Site Coefficient (S) = 1.2



APPROVED
FOR STRUCTURAL ADEQUACY ONLY
Ralph E. Anderson (TOP)
ENGINEER OF BRIDGES AND STRUCTURES



Exp. 11/30/10

GENERAL PLAN AND ELEVATION
IL RT 59 OVER FLINT CREEK
F.A.P. RT. 338
SECTION 108 B-1
LAKE COUNTY
STA. 100+00.00
STRUCTURE NO. 049-0152

DESIGNED -	SLV
CHECKED -	DJB
DRAWN -	SLV
CHECKED -	DJB

LONCO, INC.
CONSULTING ENGINEERS
1560 WALL ST, SUITE 222
NAPERVILLE, ILLINOIS 60563 PH: (630) 577-9100

SHEET NO. S1 OF S17 SHEETS	F.A.P. RTE.	SECTION	COUNTY	TOTAL SHEETS	SHEET NO.
	338	108 B-1	LAKE	40	13
	D-91-289-09			CONTRACT NO. 60F92	
FED. ROAD DIST. NO. ILLINOIS FED. AID PROJECT					