

STATE OF ILLINOIS
DEPARTMENT OF TRANSPORTATION

West Edge of Pavement

Location	Station	Offset	Theoretical Grade Elevations
S. End S. Appr Slab	99+57.75	-28.17'	97.55
A	99+67.75	-28.17'	97.64
B	99+77.75	-28.17'	97.73
N. End S. Appr Slab	99+87.75	-28.17'	97.83

CL IL 59 & P.G.L.

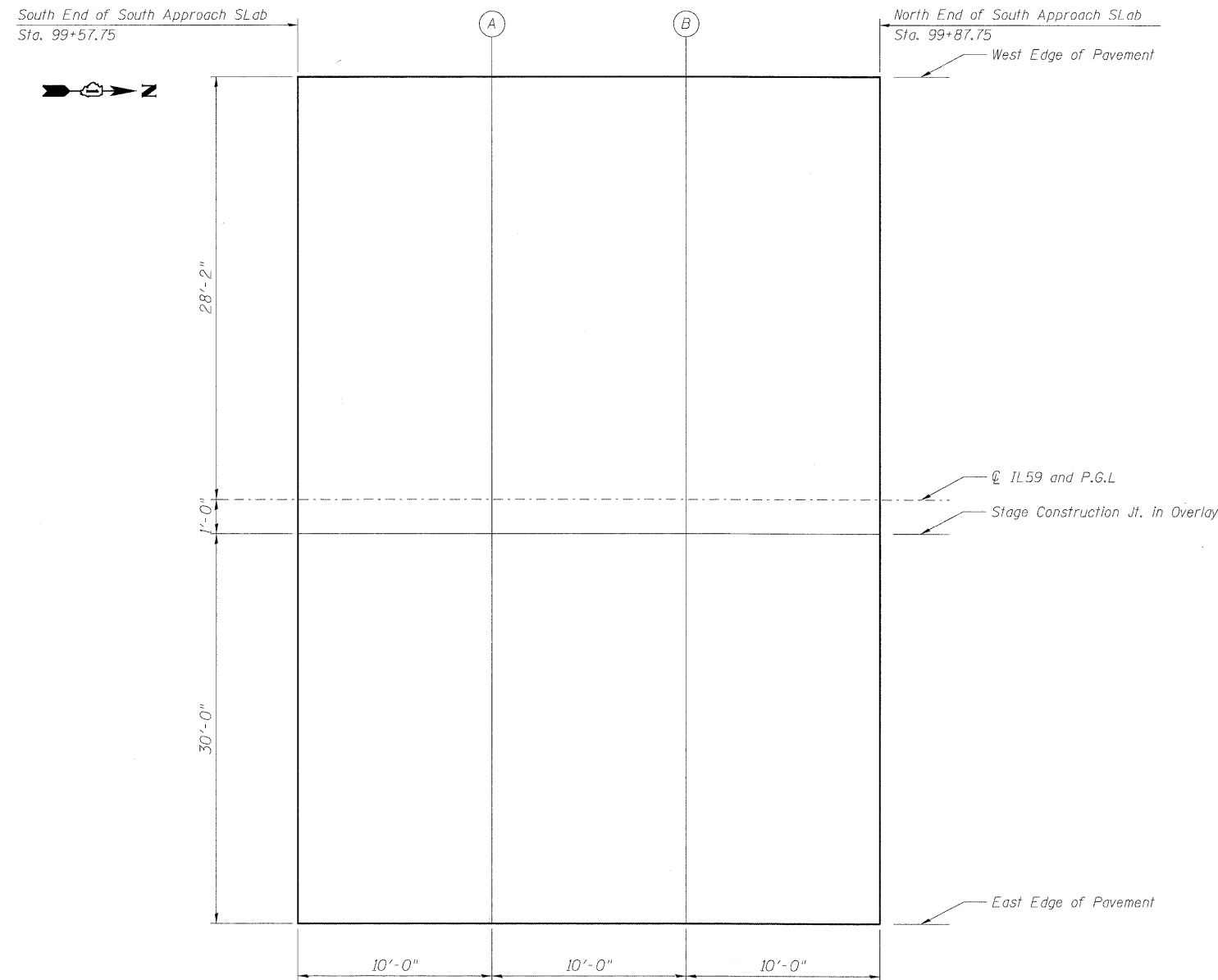
Location	Station	Offset	Theoretical Grade Elevations
S. End S. Appr Slab	99+57.75	0.00'	97.99
A	99+67.75	0.00'	98.08
B	99+77.75	0.00'	98.17
N. End S. Appr Slab	99+87.75	0.00'	98.27

Stage Construction Joint in Overlay

Location	Station	Offset	Theoretical Grade Elevations
S. End S. Appr Slab	99+57.75	1.00'	97.98
A	99+67.75	1.00'	98.06
B	99+77.75	1.00'	98.15
N. End S. Appr Slab	99+87.75	1.00'	98.25

East Edge of Pavement

Location	Station	Offset	Theoretical Grade Elevations
S. End S. Appr Slab	99+57.75	31.00'	97.51
A	99+67.75	31.00'	97.60
B	99+77.75	31.00'	97.69
N. End S. Appr Slab	99+87.75	31.00'	97.78



PLAN

TOP OF SOUTH
APPROACH SLAB ELEVATIONS
STRUCTURE NO. 049-0152

DESIGNED -	SLV
CHECKED -	DJB
DRAWN -	SLV
CHECKED -	DJB

LONCO, INC.
CONSULTING ENGINEERS
1560 WALL ST, SUITE 222
NAPERVILLE, ILLINOIS 60563 PH: (630) 577-9100

SHEET NO. S6 OF S17 SHEETS	F.A.P. RTE.	SECTION	COUNTY	TOTAL SHEETS	SHEET NO.
	338	108 B-1	LAKE	40	18
D-91-289-09			CONTRACT NO. 60F92		
FED. ROAD DIST. NO. _ ILLINOIS FED. AID PROJECT					