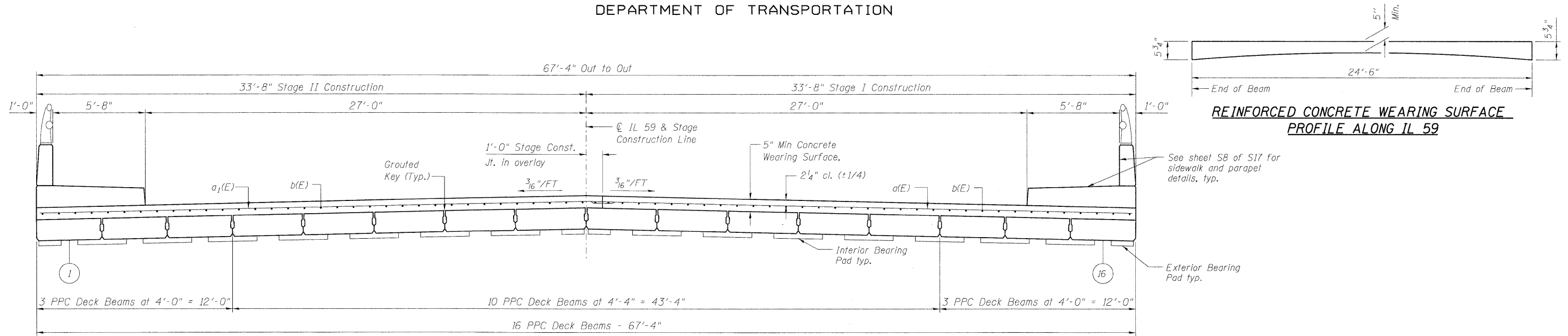


STATE OF ILLINOIS  
DEPARTMENT OF TRANSPORTATION



**REINFORCED CONCRETE WEARING SURFACE  
PROFILE ALONG IL 59**

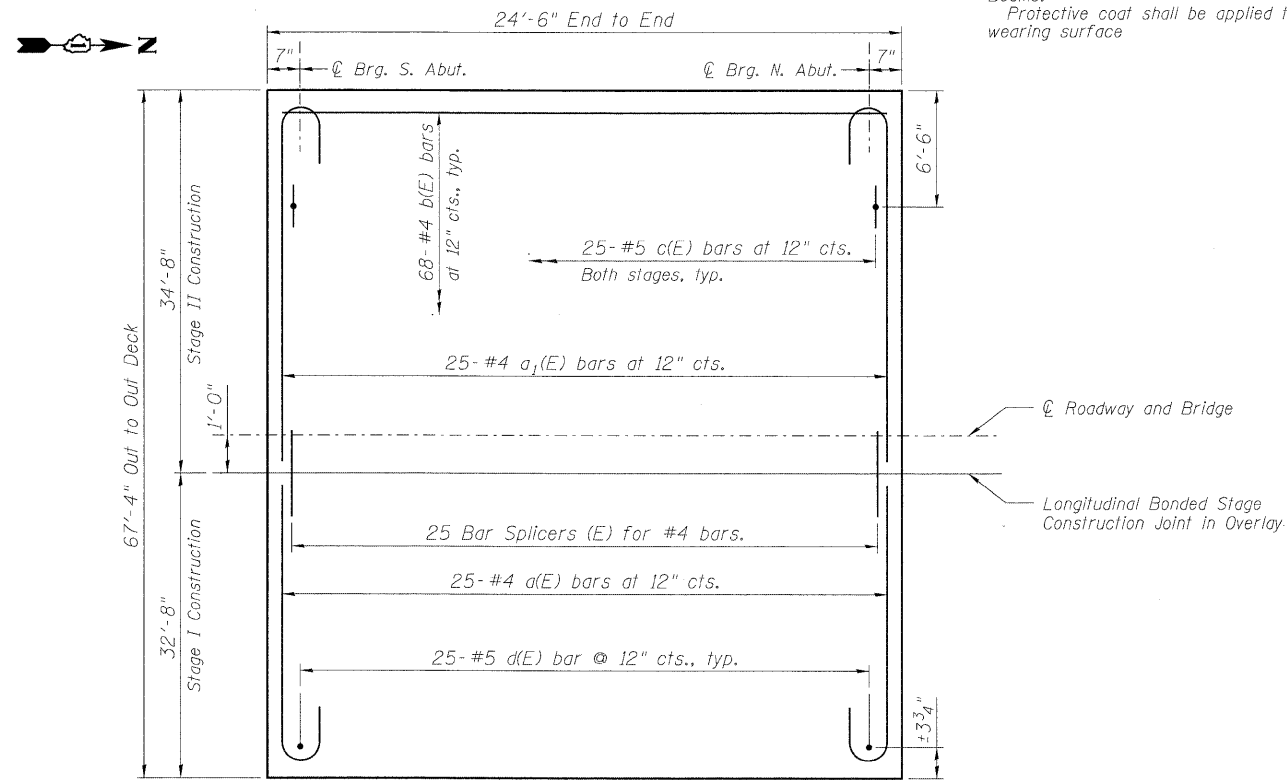
**CROSS SECTION**

**NOTES**

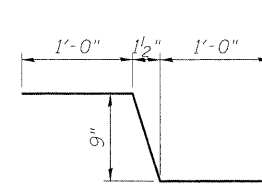
For remainder of Superstructure Details see Sheet S8 & S9 of S17.  
See sht. S13 & S14 of S17 for PPC Deck Beams.  
Protective coat shall be applied to new concrete wearing surface.

**BILL OF MATERIAL**

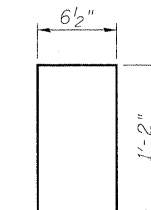
Bar	No.	Size	Length	Shape
a(E)	25	#4	32'-8"	C
a <sub>1</sub> (E)	25	#4	34'-8"	C
b(E)	68	#4	24'-2"	—
b <sub>1</sub> (E)	16	#5	24'-2"	—
b <sub>2</sub> (E)	28	#5	12'-8"	—
c(E)	106	#5	2'-9"	—
c <sub>1</sub> (E)	106	#5	5'-2"	—
d(E)	50	#5	3'-8"	—
d <sub>1</sub> (E)	56	#5	2'-11"	—
d <sub>2</sub> (E)	60	#5	2'-11"	—
e(E)	24	#4	11'-11"	—
e <sub>1</sub> (E)	24	#4	12'-8"	—
Concrete Wearing Surface 5"		Sq. Yd.	184	
Bar Splicers		Each	25	
Concrete Removal		Cu. Yd.	12.0	
Concrete Superstructure		Cu. Yd.	8.1	
Reinforcement Bars, Epoxy Coated		Pound	4810	



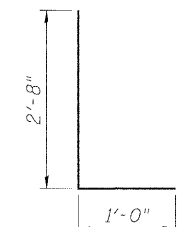
**CONCRETE WEARING SURFACE PLAN**



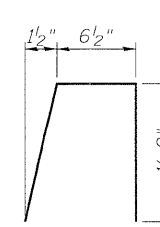
**BAR c(E)**



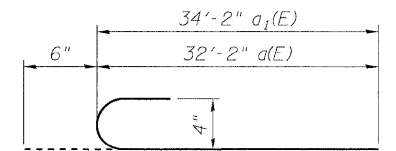
**BAR d<sub>1</sub>(E)**



**BAR d(E)**



**BAR d<sub>2</sub>(E)**



**BAR a(E) & a<sub>1</sub>(E)**

DESIGNED	-	SLV
CHECKED	-	DJB
DRAWN	-	SLV
CHECKED	-	DJB

**LONGCO, INC.**  
CONSULTING ENGINEERS  
1560 WALL ST, SUITE 222  
NAPERVILLE, ILLINOIS 60563 PH: (630) 577-9100

**SUPERSTRUCTURE  
STRUCTURE NO. 049-0152**

SHEET NO. S7 OF S17 SHEETS	F.A.P. RTE. 338	SECTION 108 B-1	COUNTY LAKE	TOTAL SHEETS 40	SHEET NO. 19
	D-91-289-09		CONTRACT NO. 60F92		
FED. ROAD DIST. NO. ILLINOIS FED. AID PROJECT					