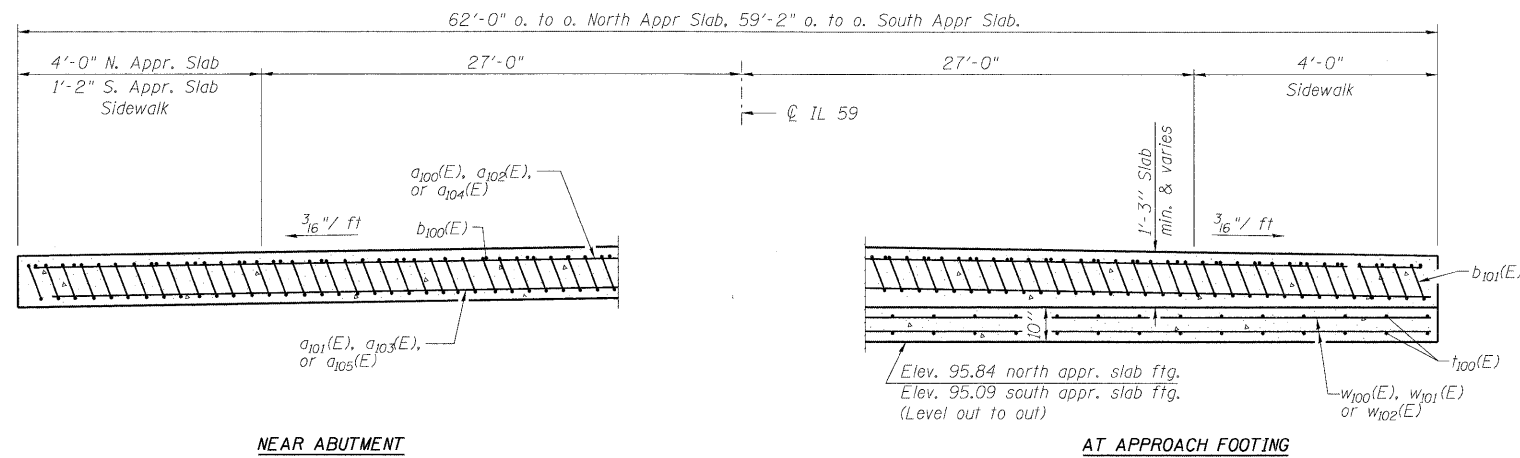
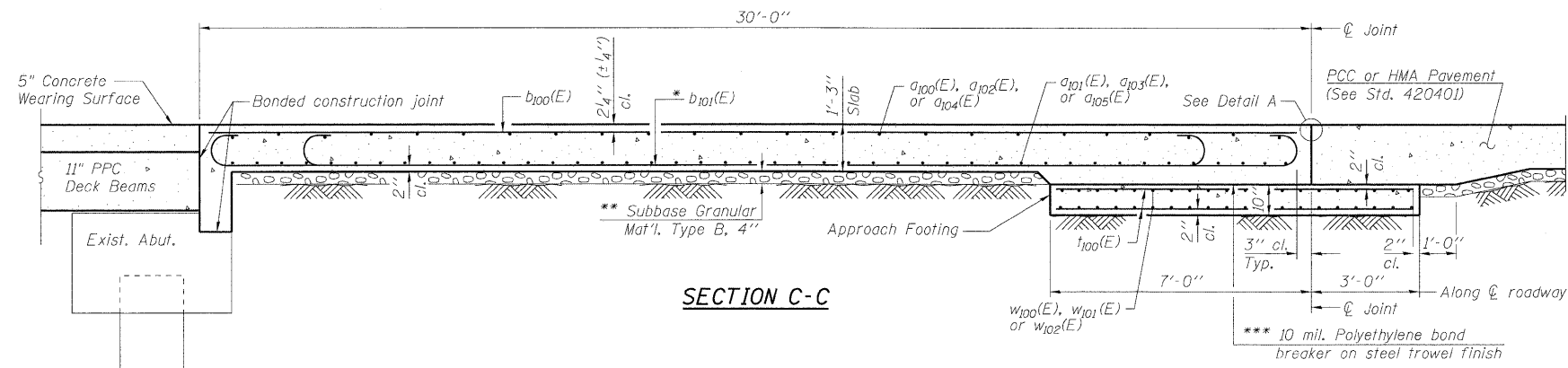


STATE OF ILLINOIS
DEPARTMENT OF TRANSPORTATION

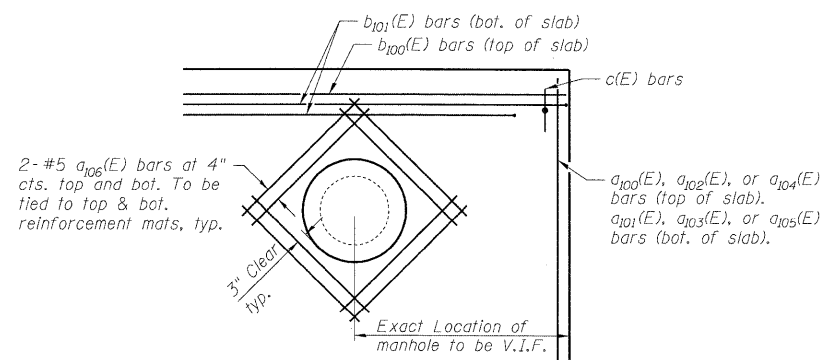
Notes:
See sheet S11 of S17 for Plan Views and Detail.
Approach slab shall be paid for as Concrete Superstructure.
Approach footing concrete shall be paid for as Concrete Structures.
Reinforcement shall be paid for as Reinforcement Bars, Epoxy Coated.
The approach footing maximum applied service bearing pressure (Q_{max}) = 2.0 ksf.
For bar splicer details, see sheet S17 of S17.
Cost of excavation for approach footing included with Concrete Structures.



NEAR ABUTMENT

SECTION D-D
(See Plan for dimensions not shown)

AT APPROACH FOOTING



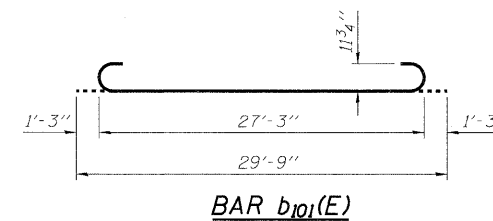
DETAIL E
PARTIAL PLAN FOR
MANHOLE REINFORCEMENT

* Tilt #9 b101(E) bars as required to maintain clearance.

*** Cost included with Concrete Superstructure.

TWO APPROACHES
BILL OF MATERIAL

Bar	No.	Size	Length	Shape
a100(E)	50	#4	29'-6"	—
a101(E)	92	#5	29'-6"	—
a102(E)	25	#4	31'-6"	—
a103(E)	46	#5	31'-6"	—
a104(E)	25	#4	28'-8"	—
a105(E)	46	#5	28'-8"	—
a106(E)	48	#5	4'-0"	—
b100(E)	96	#4	29'-8"	—
b101(E)	289	#9	29'-9"	—
t100(E)	246	#4	9'-6"	—
w100(E)	80	#5	29'-6"	—
w101(E)	40	#5	31'-6"	—
w102(E)	40	#5	28'-8"	—
Concrete Superstructure		Cu. Yd.	180.2	
Concrete Structures		Cu. Yd.	37.4	
Reinforcement Bars, Epoxy Coated		Pound	45580	
Bar Splicers		Each	222	



DESIGNED -	SLV
CHECKED -	DJB
DRAWN -	SLV
CHECKED -	DJB

LONCO, INC.
CONSULTING ENGINEERS
1560 WALL ST, SUITE 222
NAPERVILLE, ILLINOIS 60563 PH: (630) 577-9100

(Sheet 2 of 2)
BRIDGE APPROACH SLAB DETAILS
STRUCTURE NO. 049-0152

SHEET NO. S12 OF S17 SHEETS	F.A.P. RTE.	SECTION	COUNTY	TOTAL SHEETS	SHEET NO.
	338	108 B-1	LAKE	40	24
D-91-289-09			CONTRACT NO. 60F92		
FED. ROAD DIST. NO. ILLINOIS FED. AID PROJECT					