

F.A.P. RTE.	SECTION	COUNTY	TOTAL SHEETS	SHEET NO.
303	136 B-1	LAKE	43	1
FED. ROAD DIST. NO.	ILLINOIS	CONTRACT NO. 60F93		

D-91-290-09

STATE OF ILLINOIS
DEPARTMENT OF TRANSPORTATION
DIVISION OF HIGHWAYS

PLANS FOR PROPOSED
FEDERAL AID HIGHWAY

F.A.P. ROUTE 303 IL ROUTE 173 OVER DES PLAINES RIVER
(0.2 MILES EAST OF US ROUTE 41)

SECTION: 136 B-1 PROJECT: ACNHF-0303(048)

LAKE COUNTY
C-91-290-09

PPC DECK BEAM REPLACEMENT PROJECT
SN 049-0059



STATE OF ILLINOIS
DEPARTMENT OF TRANSPORTATION
DIVISION OF HIGHWAYS

SUBMITTED JUNE 25, 2010

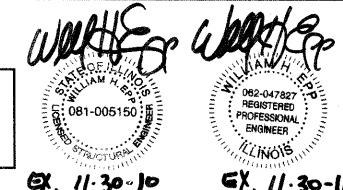
Diana M. O'Keefe
DEPUTY DIRECTOR OF HIGHWAYS, REGION ENGINEER

August 13 2010
Scott E. Stitt, P.E.
acting ENGINEER OF DESIGN AND ENVIRONMENT

August 13 2010
Christine M. Reed
DIRECTOR OF HIGHWAYS, CHIEF ENGINEER

PRINTED BY THE AUTHORITY
OF THE STATE OF ILLINOIS

LONGO, INC.
CONSULTING ENGINEERS
1560 WALL ST., SUITE 222
NAPERVILLE, ILLINOIS 60563 PH 6301 577-9100



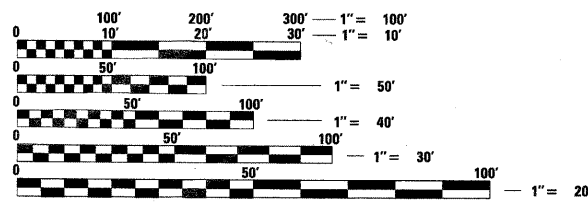
EX. 11-30-10 EX. 11-30-10

PROJECT LOCATED IN THE VILLAGE OF
WADSWORTH IN LAKE COUNTY, IL

FOR INDEX OF SHEETS, SEE SHEET NO. 2

DESIGN DESIGNATION
OTHER PRINCIPAL ARTERIAL

ADT 11300 (2007)
POSTED SPEED LIMIT 45 MPH



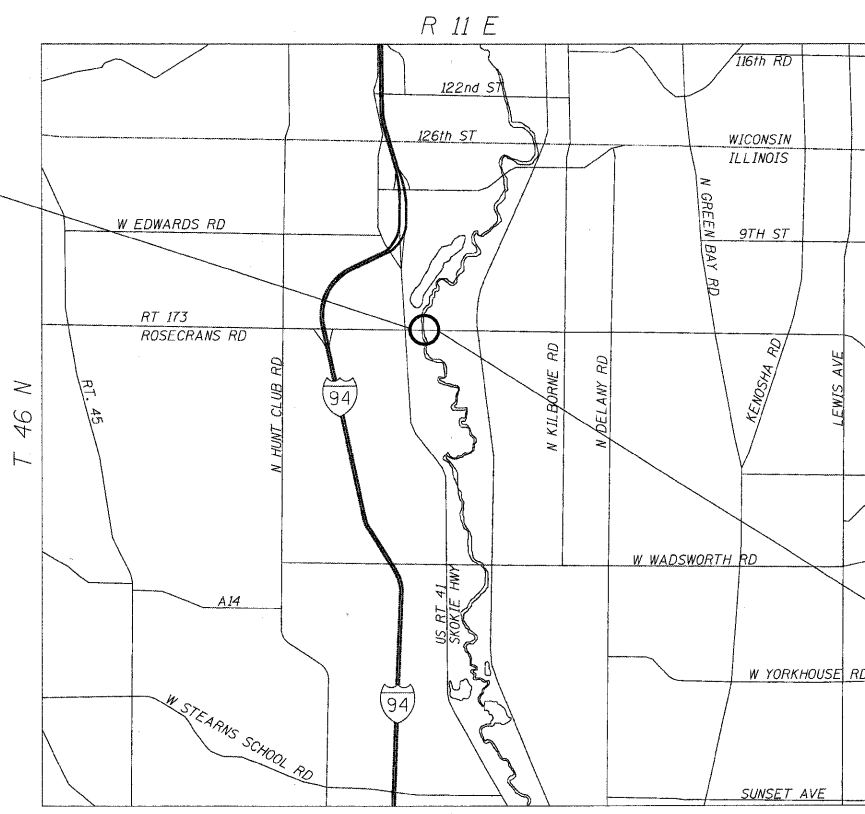
FULL SIZE PLANS HAVE BEEN PREPARED USING STANDARD
ENGINEERING SCALES. REDUCED SIZED PLANS WILL NOT
CONFORM TO STANDARD SCALES. IN MAKING MEASUREMENTS
ON REDUCED PLANS, THE ABOVE SCALES MAY BE USED.

J.U.L.I.E.
JOINT UTILITY LOCATION INFORMATION FOR EXCAVATION
1-800-892-0123
OR 811

PROJECT MANAGER: KIM HARVEY (847) 705-4055
PROJECT ENGINEER:

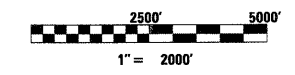
CONTRACT NO. 60F93

PROJECT BEGINS
STA. 98+00



PROJECT ENDS
STA. 101+80

NEWPORT TOWNSHIP
LOCATION MAP



NET AND GROSS LENGTH OF PROJECT = 380' = 0.072 MI