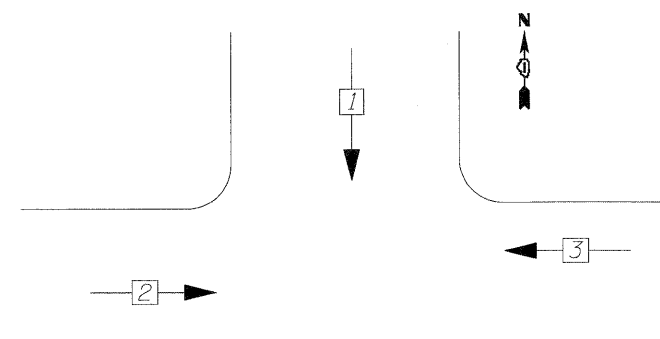


TEMPORARY CABLE PLAN  
NOT TO SCALE

TEMPORARY CONTROLLER SEQUENCE



TEMPORARY PHASE DESIGNATION DIAGRAM  
STAGE 1 AND STAGE 2

LEGEND

←[\*]← DUAL ENTRY PHASE

TEMPORARY CABLE LEGEND

⑤ - INDICATES NUMBER OF CONDUCTORS IN CABLE. ALL CONDUCTORS TO BE NUMBER 14 AWG WIRE UNLESS OTHERWISE NOTED.

R
Y
G

 - SIGNAL FACE

⌚-S- TEMPORARY GROUND ROD AT POST OR MAST ARM POLE

⌚-C- TEMPORARY GROUND ROD AT CONTROLLER

CONSTRUCTION NOTES

- ① THE PHASING SHALL BE DEACTIVATED AS REQUIRED DURING CONSTRUCTION STAGING.
- ② LED SIGNAL HEADS SHALL BE USED FOR ALL TEMPORARY TRAFFIC SIGNALS.

I.D.O.T. TRAFFIC SIGNAL INSTALLATION ELECTRICAL SERVICE REQUIREMENTS					TOTAL WATTAGE
TYPE	NO. LAMPS	WATTAGE		% OPERATION	
		INCAND	LED		
SIGNAL (RED)	6	135	17	0.50	51.00
(YELLOW)	6	135	25	0.25	37.50
(GREEN)	6	135	15	0.25	22.50
VIDEO CAMERA	3	15	1	1.00	45.00
CONTROLLER	1	100	100	1.00	100.00
ENERGY COST TO:					TOTAL = 256.00
ILLINOIS DEPARTMENT OF TRANSPORTATION 201 WEST CENTER COURT SCHAUMBURG, ILLINOIS 60196-1096					
ENERGY SUPPLY CONTACT: MR. DALE BALLINGER					
PHONE: 815 724 5717					
COMPANY: COM. EDISON					

FOUNDATION (DEPTH)	FT. (m)	CABLE SLACK	FT. (m)	VERTICAL	FT. (m)
TYPE A - POST	4 (0.2)	HANHOLE	6.5 (2.0)	ALL FOUNDATIONS	3.5 (1.0)
D - CONTROLLER	4 (0.2)	DOUBLE HANHOLE	13 (4.0)	MAST ARM (L) POLE	20'+L-2= (6m+L-0.6m)=
E - M. ARM POLE		SIGNAL POST	2 (1.0)	BRACKET MOUNTED	13 (0.5)
24" (600 mm)	10 (3.0)	CONTROLLER CAB.	1 (0.5)	PED. PUSHBUTTON	4 (1.2)
30" (750 mm)	10 (3.0)	FIBER OPTIC	13 (4.0)	ELECTRIC SERVICE	13.5 (4.1)
36" (900 mm)	15 (4.6)	ELECTRIC SERVICE	1 (0.5)	SERVICE TO GROUND	13.5 (4.1)
		GROUND CABLE	1 (0.5)	POST MOUNTED	6 (1.8)

**LOWCO INC.**  
CONSULTING ENGINEERS  
1560 WALL ST. SUITE 222  
NAPERVILLE, ILLINOIS 60563 PH: 630/577-9100

DESIGNED - MJY  
DRAWN - ST, TSC  
CHECKED - MJY, SLV  
DATE - 06/25/2010

STATE OF ILLINOIS  
DEPARTMENT OF TRANSPORTATION

CABLE PLAN  
IL ROUTE 173 OVER DES PLAINES RIVER  
SCALE: NONE SHEET NO. 1 OF 1 SHEET STA. 98+00 TO STA. 101+80

F.A.I. RTE.	SECTION	COUNTY	TOTAL SHEETS	SHEET NO.
303	136 B-1	LAKE	43	14
D-91-290-09			CONTRACT NO. 60F93	
FED. ROAD DIST. NO. [ILLINOIS] FED. AID PROJECT				