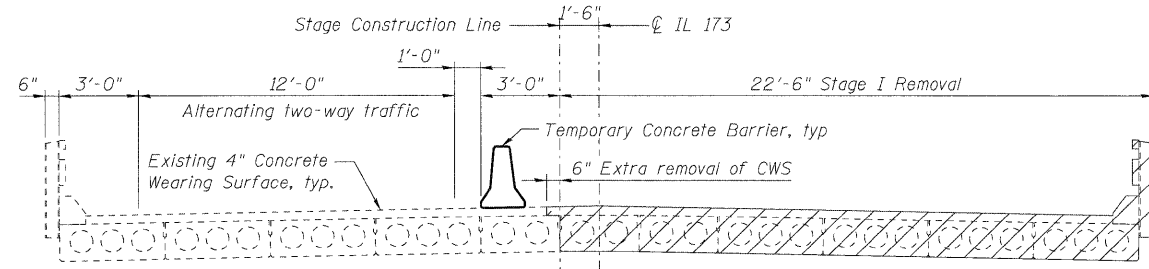
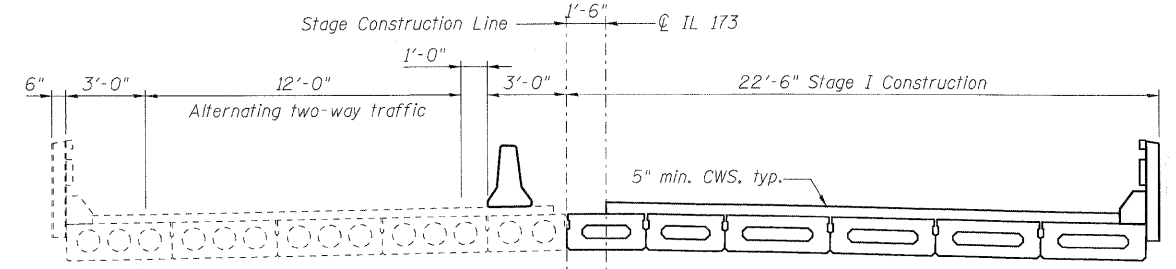


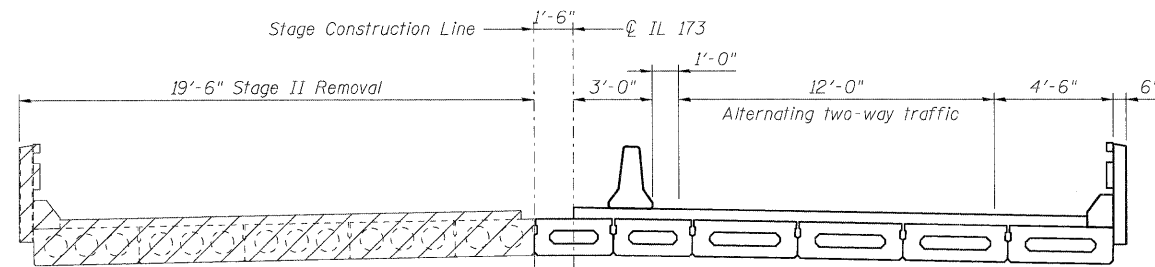
STATE OF ILLINOIS  
DEPARTMENT OF TRANSPORTATION



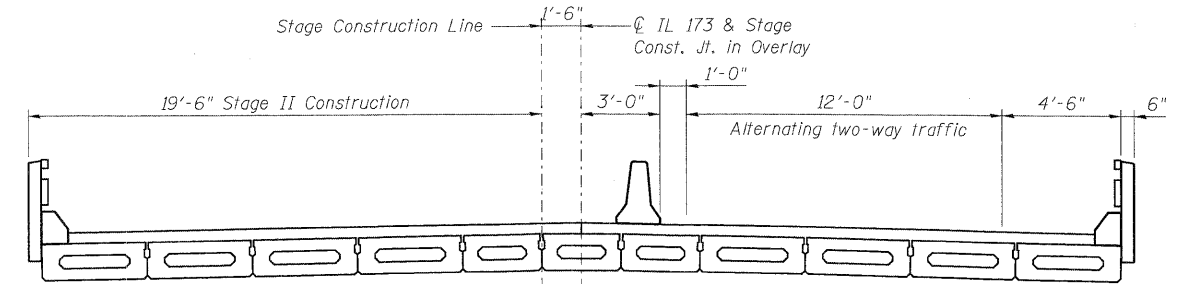
STAGE I REMOVAL



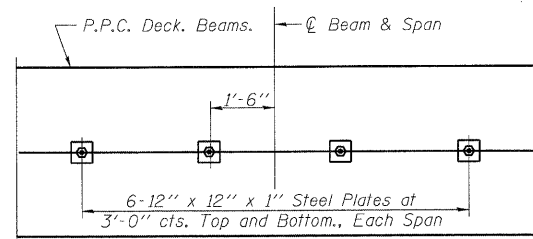
STAGE I CONSTRUCTION



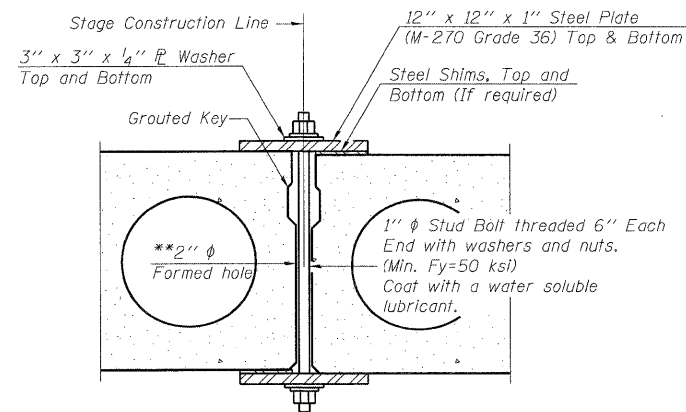
STAGE II REMOVAL



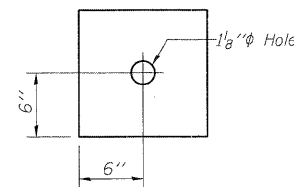
STAGE II CONSTRUCTION



PLAN



SECTION



CLAMPING PLATE

**SHEAR KEY CLAMPING DETAILS AT STAGE CONST. JT.**

Cost included with Precast Prestressed Concrete Deck Beams.  
See Stage Construction Details for traffic lanes.

\*\* Cast 2" diameter semi-circular recesses in the sides of each beam adjacent to the stage construction line. These recesses should align to form a hole at the appropriate locations for the clamping device bolts.

**NOTES**

All Cross Sections looking East.  
Hatched area indicates Removal of Existing Superstructures.  
Cost of removing existing concrete wearing surface, joints in deck, floor drains, steel railing and concrete curb are included with Removal of Existing Superstructures.  
For quantity of Temporary Concrete Barrier see Roadway Plans.  
For Temporary Concrete Barrier details see Sheet S4 of S20.

DESIGNED -	SLV
CHECKED -	DJB
DRAWN -	SLV
CHECKED -	DJB

**LONGO, INC.**  
CONSULTING ENGINEERS  
1560 WALL ST, SUITE 222  
NAPERVILLE, ILLINOIS 60563 PH: (630) 577-9100

**STAGE CONSTRUCTION DETAILS  
STRUCTURE NO. 049-0059**

SHEET NO. S3 OF S20 SHEETS	F.A.P. RTE.	SECTION	COUNTY	TOTAL SHEETS	SHEET NO.
	303	136 B-1	LAKE	43	18
D-91-290-09			CONTRACT NO. 60F93		
FED. ROAD DIST. NO. ILLINOIS FED. AID PROJECT					