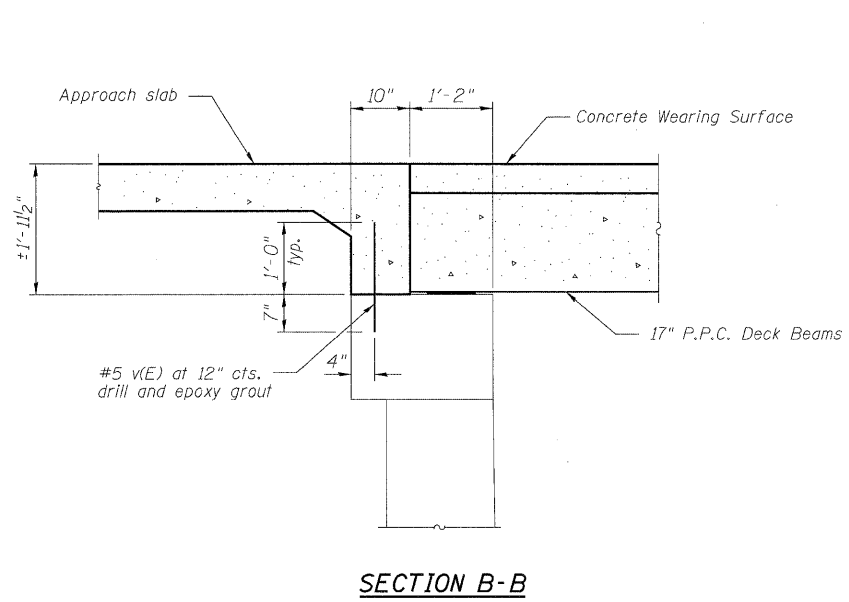
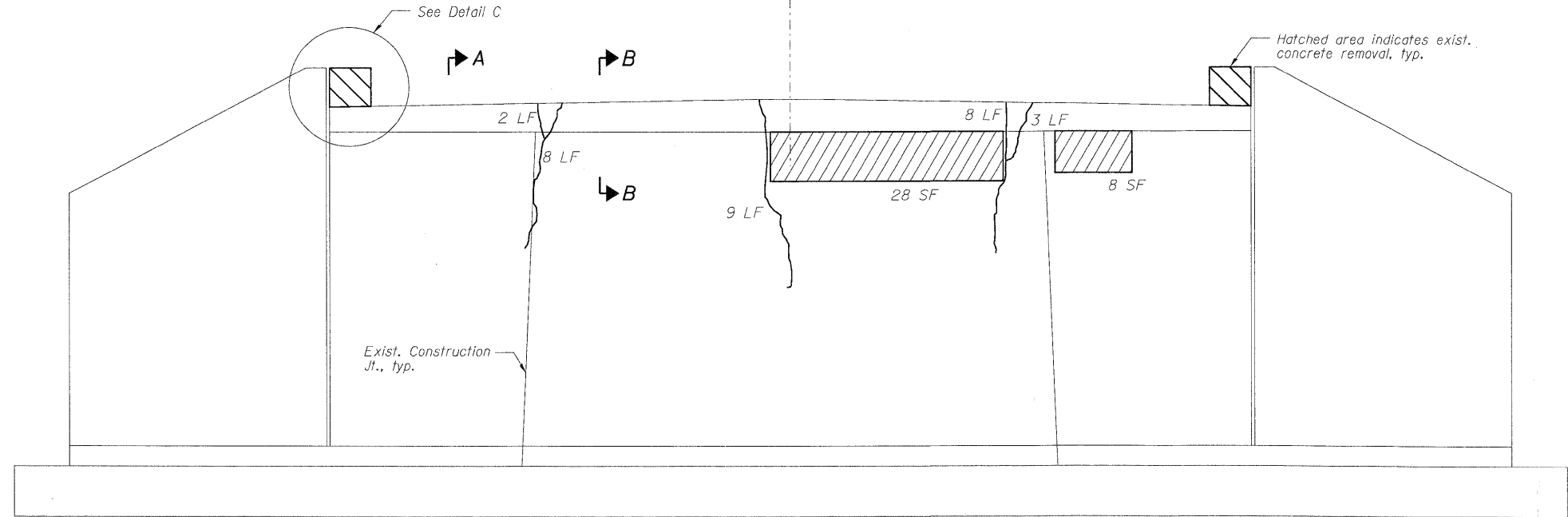


STATE OF ILLINOIS
DEPARTMENT OF TRANSPORTATION

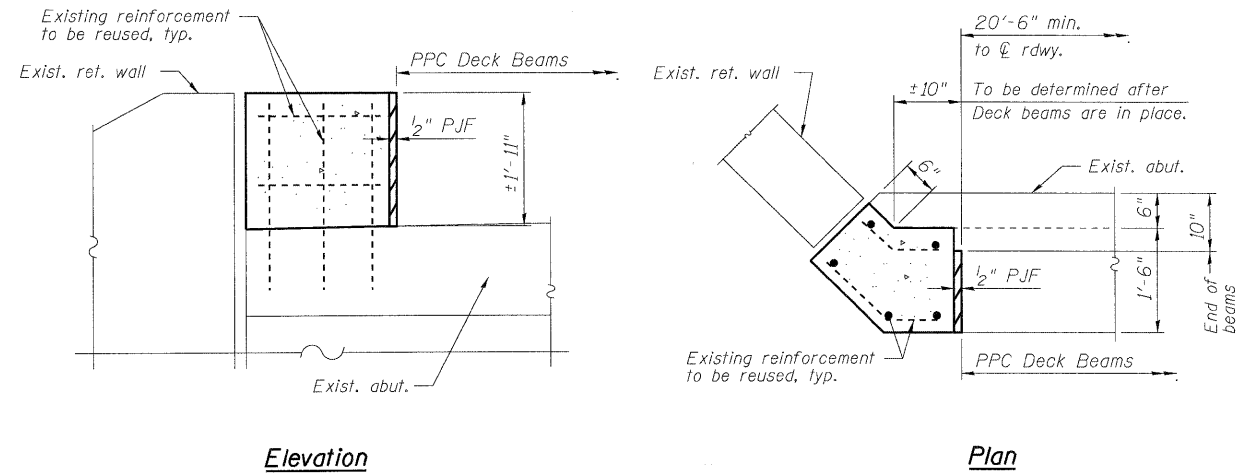


SECTION B-B



ELEVATION - REMOVAL AND REPAIR
(Looking West)

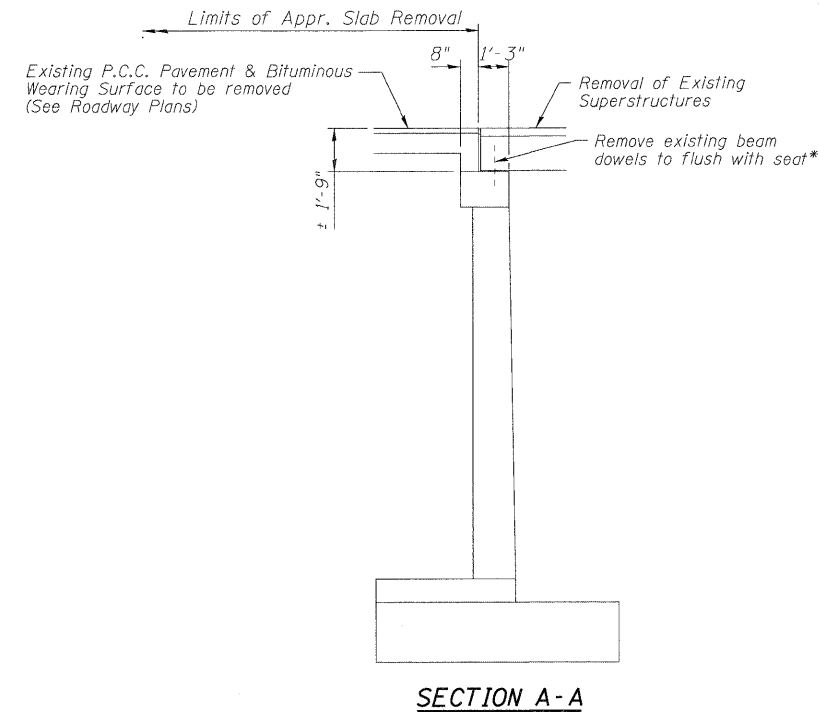
— Epoxy Crack Injection
 Formed Concrete Repair Depth < 5"



Elevation

Plan

DETAIL C



SECTION A-A

*Exist. dowels for exterior beams on all three spans may need to be completely cored out of abutment so dowels for new beams can be installed, V.I.F., to be included with cost of Removal of Exist. Superstructures. If exist. dowels are in correct location for new outside beams, they may be re-used, see notes below for re-using exist. dowels.

BILL OF MATERIAL

Bar	No.	Size	Length	Shape
v(E)	41	#5	1'-7"	—
Concrete Removal			Cu. Yd.	0.4
Concrete Superstructure			Cu. Yd.	0.4
Epoxy Crack Injection			Foot	30
Structural Repair of Concrete (Depth less than equal to 5")			Sq. Ft.	36
Reinforcement Bars, Epoxy Coated			Pound	70

NOTES

Existing reinforcement shall be cleaned, straightened (if required) and incorporated into the new construction. Cost included with Concrete Removal.
 Existing reinforcement bars which have lost 25% or more of their original diameter shall be supplemented by new epoxy coated bars of the same diameter. New bars shall be drilled and epoxy grouted in place adjacent to the original bars, as directed by the Engineer.
 Drilling and epoxy grouting of reinforcement bars shall be in accordance with Article 584 of the Standard Specifications.
 See sht. S8 of S20 for proposed section thru abutment.

DESIGNED -	SLV
CHECKED -	DJB
DRAWN -	SLV
CHECKED -	DJB

LONGO, INC.
 CONSULTING ENGINEERS
 1560 WALL ST., SUITE 222
 NAPERVILLE, ILLINOIS 60563 PH: (630) 577-9100

WEST ABUTMENT DETAILS
STRUCTURE NO. 049-0059

SHEET NO. S17 OF S20 SHEETS	F.A.P. RTE.	SECTION	COUNTY	TOTAL SHEETS	SHEET NO.
	303	136 B-1	LAKE	43	32
D-91-290-09			CONTRACT NO. 60F93		
FED. ROAD DIST. NO. - ILLINOIS FED. AID PROJECT					