

F.A.U. RTE.	SECTION	COUNTY	TOTAL SHEETS	SHEET NO.
1362	2009-102 N	COOK	17	1

D-91-115-10

STATE OF ILLINOIS
DEPARTMENT OF TRANSPORTATION
DIVISION OF HIGHWAYS

**PLANS FOR PROPOSED
FEDERAL AID HIGHWAY**

DISTRICT 1
CONGESTION MITIGATION AIR QUALITY (C.M.A.Q.)
TRAFFIC SIGNAL INTERCONNECT

F.A.P. ROUTE 1362 / LAWRENCE AVE
25TH AVE. TO DES PLAINES RIVER ROAD

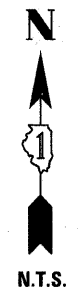
SECTION 2009-102N
COOK COUNTY
PROJECT NO. C-91-115-10

INDEX OF SHEETS

1. COVER SHEET
2. SUMMARY OF QUANTITIES
- 3.- 8. STANDARD TRAFFIC SIGNAL DESIGN DETAILS
9. LAWRENCE AVENUE @ 25TH AVENUE
TRAFFIC SIGNAL MODIFICATION PLAN
10. LAWRENCE AVENUE @ 25TH AVENUE
CABLE PLAN, PHASING DIAGRAM, SCHEDULE OF QUANTITIES
11. LAWRENCE AVENUE @ FORSTER AVENUE
TRAFFIC SIGNAL MODIFICATION PLAN
12. LAWRENCE AVENUE @ FORSTER AVENUE
CABLE PLAN, PHASING DIAGRAM, SCHEDULE OF QUANTITIES
13. LAWRENCE AVENUE @ DES PLAINES RIVER ROAD
TRAFFIC SIGNAL MODIFICATION PLAN
14. LAWRENCE AVENUE @ DES PLAINES RIVER ROAD
CABLE PLAN, PHASING DIAGRAM, SCHEDULE OF QUANTITIES
- 15.- 16. INTERCONNECT PLANS
LAWRENCE AVENUE FROM 25TH AVENUE TO DES PLAINES RIVER ROAD
17. INTERCONNECT SCHEMATIC
LAWRENCE AVENUE FROM 25TH AVENUE TO DES PLAINES RIVER ROAD



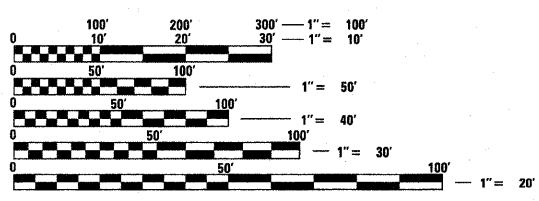
LOCATION OF SECTION INDICATED THUS: - [highlighted area]



STANDARDS

- 701006-03
- 701001-02
- 701101-02
- 701301-03
- 701501-05
- 701502-03
- 701801-04
- 701901-01

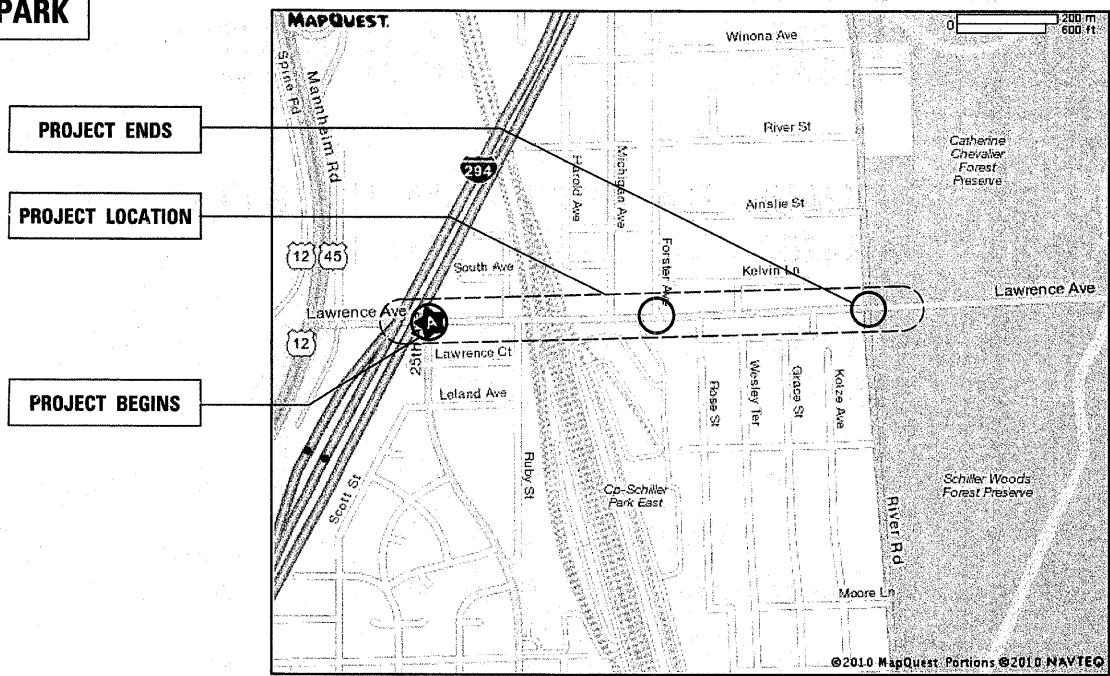
PROJECT LOCATED IN THE
VILLAGE OF SCHILLER PARK



FULL SIZE PLANS HAVE BEEN PREPARED USING STANDARD ENGINEERING SCALES. REDUCED SIZED PLANS WILL NOT CONFORM TO STANDARD SCALES. IN MAKING MEASUREMENTS ON REDUCED PLANS, THE ABOVE SCALES MAY BE USED.

BEFORE STARTING ANY EXCAVATION, THE CONTRACTOR SHALL CALL "J.U.L.I.E." AT (800) 892-0123 OR 811 FOR FIELD LOCATIONS OF BURIED ELECTRIC, TELEPHONE AND GAS UTILITIES. 48 HOUR NOTIFICATION IS REQUIRED.

SCALES { PLAN 1"=20'
INTERCONNECT 1"=50'



LOCATION MAP

STATE OF ILLINOIS
DEPARTMENT OF TRANSPORTATION
DIVISION OF HIGHWAYS

SUBMITTED June 25 2010
Diane M. O'Keefe
DEPUTY DIRECTOR OF HIGHWAYS, REGION ENGINEER

August 13 2010
Scott E. Stitt P.E.
Acting ENGINEER OF DESIGN AND ENVIRONMENT

August 13 2010
Christine M. Reed
DIRECTOR OF HIGHWAYS, CHIEF ENGINEER

PRINTED BY THE AUTHORITY
OF THE STATE OF ILLINOIS

Rev. 03/10

DISTRICT 1 BUREAU OF TRAFFIC: STEVE TRAVIA/DARYLE DREW (847) 705-4420