

F.A.U. RTE.	SECTION	COUNTY	TOTAL SHEETS	SHEET NO.
1362	2009-102 N	COOK	17	1

D-91-115-10

STATE OF ILLINOIS
DEPARTMENT OF TRANSPORTATION
DIVISION OF HIGHWAYS

**PLANS FOR PROPOSED
FEDERAL AID HIGHWAY**

DISTRICT 1
CONGESTION MITIGATION AIR QUALITY (C.M.A.Q.)
TRAFFIC SIGNAL INTERCONNECT

F.A.P. ROUTE 1362 / LAWRENCE AVE
25TH AVE. TO DES PLAINES RIVER ROAD

SECTION 2009-102N
COOK COUNTY
PROJECT NO. C-91-115-10

INDEX OF SHEETS

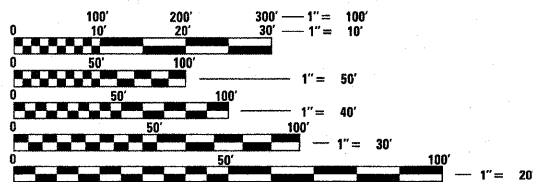
1. COVER SHEET
2. SUMMARY OF QUANTITIES
- 3.- 8. STANDARD TRAFFIC SIGNAL DESIGN DETAILS
9. LAWRENCE AVENUE @ 25TH AVENUE
TRAFFIC SIGNAL MODIFICATION PLAN
10. LAWRENCE AVENUE @ 25TH AVENUE
CABLE PLAN, PHASING DIAGRAM, SCHEDULE OF QUANTITIES
11. LAWRENCE AVENUE @ FORSTER AVENUE
TRAFFIC SIGNAL MODIFICATION PLAN
12. LAWRENCE AVENUE @ FORSTER AVENUE
CABLE PLAN, PHASING DIAGRAM, SCHEDULE OF QUANTITIES
13. LAWRENCE AVENUE @ DES PLAINES RIVER ROAD
TRAFFIC SIGNAL MODIFICATION PLAN
14. LAWRENCE AVENUE @ DES PLAINES RIVER ROAD
CABLE PLAN, PHASING DIAGRAM, SCHEDULE OF QUANTITIES
- 15.- 16. INTERCONNECT PLANS
LAWRENCE AVENUE FROM 25TH AVENUE TO DES PLAINES RIVER ROAD
17. INTERCONNECT SCHEMATIC
LAWRENCE AVENUE FROM 25TH AVENUE TO DES PLAINES RIVER ROAD



STANDARDS

- 701006-03
- 701001-02
- 701101-02
- 701301-03
- 701501-05
- 701502-03
- 701801-04
- 701901-01

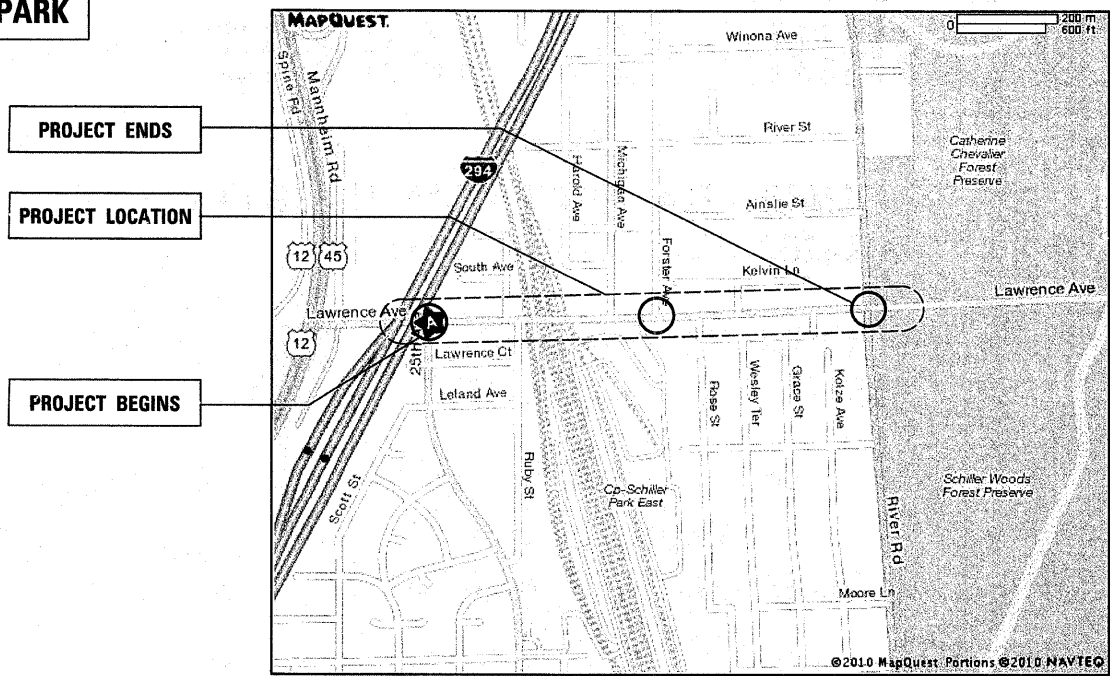
PROJECT LOCATED IN THE
VILLAGE OF SCHILLER PARK



FULL SIZE PLANS HAVE BEEN PREPARED USING STANDARD ENGINEERING SCALES. REDUCED SIZED PLANS WILL NOT CONFORM TO STANDARD SCALES. IN MAKING MEASUREMENTS ON REDUCED PLANS, THE ABOVE SCALES MAY BE USED.

BEFORE STARTING ANY EXCAVATION, THE CONTRACTOR SHALL CALL "J.U.L.I.E." AT (800) 892-0123 OR 811 FOR FIELD LOCATIONS OF BURIED ELECTRIC, TELEPHONE AND GAS UTILITIES. 48 HOUR NOTIFICATION IS REQUIRED.

SCALES { PLAN 1"=20'
INTERCONNECT 1"=50'



LOCATION MAP

STATE OF ILLINOIS
DEPARTMENT OF TRANSPORTATION
DIVISION OF HIGHWAYS

SUBMITTED June 25 2010
Diane M. O'Keefe
DEPUTY DIRECTOR OF HIGHWAYS, REGION ENGINEER

August 13 2010
Scott E. Stitt P.E.
Acting ENGINEER OF DESIGN AND ENVIRONMENT

August 13 2010
Christine M. Reed
DIRECTOR OF HIGHWAYS, CHIEF ENGINEER

PRINTED BY THE AUTHORITY
OF THE STATE OF ILLINOIS

Rev. 03/10

DISTRICT 1 BUREAU OF TRAFFIC: STEVE TRAVIA/DARYLE DREW (847) 705-4420

SUMMARY OF QUANTITIES

PERCENTAGES							
LOCATION OF WORK			<div style="border: 1px solid black; border-radius: 50%; padding: 2px; display: inline-block;">100% STATE URBAN</div>				
SUMMARY OF QUANTITIES			CONSTRUCTION CODE	Y031 1F	Y031 1F	Y031 1F	Y031 1F
CODE NO.	ITEM	UNIT	GRAND TOTAL	LAWRENCE AVE. @ 25TH STREET	LAWRENCE AVE. @ FOSTER AVE.	LAWRENCE AVE. @ DES-PLAINES RIVER RD.	INTERCONNECT
67100100	MOBILIZATION	L SUM	1	0.25	0.25	0.25	0.25
70102620	TRAFFIC CONTROL AND PROTECTION, STANDARD 701501	L SUM	1	0.25	0.25	0.25	0.25
70102622	TRAFFIC CONTROL AND PROTECTION, STANDARD 701502	L SUM	1	0.25	0.25	0.25	0.25
70102640	TRAFFIC CONTROL AND PROTECTION, STANDARD 701801	L SUM	1	0.25	0.25	0.25	0.25
81000600	CONDUIT IN TRENCH, 2" DIA., GALVANIZED STEEL	FOOT	1038			226	812
81018500	CONDUIT PUSHED, 2" DIA., GALVANIZED STEEL	FOOT	1182			57	1125
81400100	HANDHOLE	EACH	5				5
81900200	TRENCH AND BACKFILL FOR ELECTRICAL WORK	FOOT	1038			226	812
85000200	MAINTENANCE OF EXISTING TRAFFIC SIGNAL INSTALLATION	EACH	3	1	1	1	
85700200	FULL-ACTUATED CONTROLLER AND TYPE IV CABINET	EACH	2	1	1		
85700300	FULL-ACTUATED CONTROLLER AND TYPE V CABINET	EACH	1			1	
86000100	MASTER CONTROLLER	EACH	2			1	1
86400100	TRANSCEIVER - FIBER OPTIC	EACH	3	1	1	1	
Z0030850	TEMPORARY INFORMATION SIGNING	SQ FT	102.8				102.8
87900200	DRILL EXISTING HANDHOLE	EACH	5			1	4
Z0033090	ELECTRIC CABLE IN CONDUIT, TRACER, NO. 14 1C	FOOT	3530				3530
X8710020	FIBER OPTIC CABLE IN CONDUIT, NO. 62.5/125, MM12F SM12F	FOOT	3530				3530
X0325096	OPTIMIZE TRAFFIC SIGNAL SYSTEM	L SUM	1				1
87301305	ELECTRIC CABLE IN CONDUIT, LEAD-IN, NO. 14 1 PAIR	FOOT	1710	300		1410	
88500100	INDUCTIVE LOOP DETECTOR	EACH	21	6	7	8	
X8050015	SERVICE INSTALLATION - POLE MOUNTED	EACH	2		1	1	
89502375	REMOVE EXISTING TRAFFIC SIGNAL EQUIPMENT	EACH	3	1	1	1	
87301805	ELECTRIC CABLE IN CONDUIT, SERVICE, NO.6 2/C	FOOT	440		140	300	
X8730027	ELECTRIC CABLE IN CONDUIT, GROUNDING, NO.6 1/C	FOOT	440		140	300	
89502300	REMOVE ELECTRIC CABLE FROM CONDUIT	FOOT	375		125	250	

Rev. 8-31-10